

# CHICAGO SCENE



April 2003

What is Carnauba? • Permanent Car Numbers • DE Tech News

***When you race,  
there's only one name to remember...***



***Northstar***  
Motorsports

**Safety Equipment & Accessories**

*For the finest in Auto Racing Safety Equipment and Accessories including Helmets, Driving Suits, Shoes, Gloves, Seats, Harnesses, Brake Pads and much more, come to our showroom in Barrington, IL or visit us online.*

***www.northstarmotorsports.com | 800.356.2080***

28144 W. Industrial Avenue, Suite 108, Barrington, IL 60010





# CHICAGO SCENE



*Paul Weiss in his 1997 C2S at Blackhawk last summer.  
Photo by Paul Silver.*

<b>IN EVERY ISSUE</b>	Clark's Corner.....	3	Spare Parts.....	37
Advertisers Index .....	Address Change Form .....	28	The Mart.....	39
Calendar of Events .....	Board Meeting Minutes–Oct. '02 .....	31	Tech Quiz.....	43
Behind the Scene.....	New Members Welcome .....	34	Directors & Coordinators .....	44

## FEATURES

THE MIDSHIP REPORT – TIRESOME .....	7
GENERAL MEMBERSHIP MEETING PHOTOS .....	8
READING A 911 OIL TEMPERATURE GAGE .....	14
WHAT IS CARNAUBA? .....	25
AUTOCROSS RULES .....	26
FENDER SEAL REPLACEMENT .....	27
PERMANENT CAR NUMBERS .....	29
DE TECH NEWS .....	30
MEMBERSHIP DIRECTORY ANNOUNCEMENT .....	34
TECH INSPECTION SHEET.....	38

## EVENT ANNOUNCEMENTS

SO YOU WANT TO GO RACING . . . . .	5
SPRING HAS SPRUNG RALLYE . . . . .	6
AUTOCROSS DRIVERS SCHOOL . . . . .	10
BLACKHAWK DE EXPERIENCED . . . . .	12
BLACKHAWK DE NOVICE . . . . .	13
AUTOCROSS 1 – MAYWOOD . . . . .	16
ROAD AMERICA DE . . . . .	17
TRAC 2003 CLUB RACE . . . . .	24

SUBMISSIONS TO THE EDITORS: Scott Adleman, Stan Reed & Cari Compton  
Precision Research, Inc. 10600 W. Higgins Rd. Suite 100 Rosemont IL, 60018  
E-mail: [saa@prepres.com](mailto:saa@prepres.com)

Send address changes to: POSTMASTER: Bob Soske, PressTech  
959 Lee Street DesPlaines, IL 60016-6545  
E-mail: [Leedlast@hotmail.com](mailto:Leedlast@hotmail.com)

Published articles and advertising are for general, informational purposes only. The opinions contained therein belong to the authors or sponsors solely. They are not meant to establish absolute technical and safety standards. Therefore, no authentication is implied by the editors or publishers.

### SUBMISSION INFORMATION

Articles are preferred in MSWord but they can be contained in the body of an e-mail. Do not send articles in pdf format.  
Digital photos: All digital photos should be taken at the maximum resolution the camera allows. At a minimum, pictures should be 300 dpi for use in the newsletter. File format can be either tiff or jpeg.  
Commercial Advertising: For rates and technical information, contact the editor at 847-390-8666.

The Chicago Scene (ISSN 10564195) (USPS 0006-381) is the monthly publication of the Porsche Club of America (PCA) – Chicago Region, printed at PressTech, 959 Lee Street DesPlaines, IL 60016-6545. Periodical Rate Postage Paid at Des Plaines, IL USPS. Subscription is provided to members of the PCA – Chicago Region. PCA dues are \$42.00 annually, of which \$12.00 is for the subscription. Subscription rates for non-Chicago Region members is \$24.00 per year. Permission to reprint any material published herein is granted, provided full credit is given to Chicago Scene and the author. PCA – Chicago Region is not responsible for any services or products advertised herein. Statements appearing in the Chicago Scene are those of the author and do not constitute an opinion of the PCA – Chicago or its Board of Directors.

2003

# CALENDAR OF EVENTS

# Current Calendar of Events

**A p r i l • 2 0 0 3**

APRIL 2003

Friday, April 4 Board Meeting at Park Ridge VFW  
 Saturday, April 12 Club Race Information Workshop  
 Sunday, April 13 Rallye I  
 Sunday, April 27 Autocross Drivers' School at Maywood Park

MAY 2003

Friday, May 2 Board Meeting at Park Ridge VFW  
 Wednesday, May 7 Blackhawk Drivers' ED, Experienced Drivers Only  
 Sunday, May 11 Autocross I at Maywood Park  
 Wednesday, May 14 Blackhawk Drivers' ED, Novice /Instructor  
 Friday, May 23 Road America Drivers' ED, Novice and Instructors  
 Saturday, May 24 Road America Drivers' ED  
 and Sunday, May 25 Memorial Day Weekend

JUNE 2003

Friday, June 6 Board Meeting at Park Ridge VFW  
 Sunday, June 8 Concours I \ Rallye II  
 Wednesday, June 11 Blackhawk Drivers' ED  
 Sunday, June 22 Autocross II at Maywood Park  
 Sunday, June 29 Autocross Run for Fun at Rockford Speedway

JULY 2003

Wednesday, July 9 Blackhawk Drivers' ED  
 Friday, July 11 Board Meeting at Park Ridge VFW  
 Sunday, July 13 Rallye III  
 Sunday, July 20 Potter's Picnic and Concours II at Peter Fischer's  
 Sunday, July 27 Autocross III at Maywood Park

AUGUST 2003

Saturday, August 2 and Sunday, August 3 Gingerman Raceway Drivers' ED  
 Friday, August 8 Board Meeting at Park Ridge VFW Hall  
 Sunday, August 10 Autocross IV at Maywood Park

<i>monday</i>	<i>tuesday</i>	<i>wednesday</i>	<i>thursday</i>	<i>friday</i>	<i>saturday</i>	<i>sunday</i>
	<b>1</b>	<b>2</b>	<b>3</b>	<b>4</b>	<b>5</b>	<b>6</b>
<b>7</b>	<b>8</b>	<b>9</b>	<b>10</b>	<b>11</b> Board Meeting at Park Ridge VFW	<b>12</b> Club Race Workshop	<b>13</b> Rallye I
<b>14</b>	<b>15</b>	<b>16</b>	<b>17</b>	<b>18</b>	<b>19</b>	<b>20</b>
<b>21</b>	<b>22</b>	<b>23</b>	<b>24</b>	<b>25</b>	<b>26</b>	<b>27</b> Autocross Driving School Maywood
<b>28</b>	<b>29</b>	<b>30</b>				

**M a y • 2 0 0 3**

<i>monday</i>	<i>tuesday</i>	<i>wednesday</i>	<i>thursday</i>	<i>friday</i>	<i>saturday</i>	<i>sunday</i>
			<b>1</b>	<b>2</b> Board Meeting at Park Ridge VFW	<b>3</b>	<b>4</b>
<b>5</b>	<b>6</b>	<b>7</b> Blackhawk DE Experienced	<b>8</b>	<b>9</b>	<b>10</b>	<b>11</b> Autocross I Maywood
<b>12</b>	<b>13</b>	<b>14</b> Blackhawk DE Novice & Instructor	<b>15</b>	<b>16</b>	<b>17</b>	<b>18</b>
<b>19</b>	<b>20</b>	<b>21</b>	<b>22</b>	<b>23</b> Road America DE - Novice & Instructor	<b>24</b> Road America DE Weekend	<b>25</b> Road America DE Weekend
<b>26</b>	<b>27</b>	<b>28</b>	<b>29</b>	<b>30</b>	<b>31</b>	

**Advertisers Index**

914 Limited ..... 35  
 Autobahn .....36  
 R.A. Adams Enterprises .....34  
 Bacino's .....BC  
 Body Werks of Barrington .....15  
 Emmons Coach Works .....15  
 The Exchange ..... 4  
 Fischer Motors .....35  
 GingerMan - Homes .....35  
 Kelly-Moss Motorsports .....41  
 Lynch Porsche .....42  
 Manny's .....35  
 Midwest Eurosports .....35  
 Midwest Performance Cars .....28  
 Moto Persona ..... 8  
 Napleton Porsche .....IBC  
 Northstar Motorsports .....IFC  
 Property Consultants .....34  
 Joe Rizza Porsche .....22/23

# Clark's Corner

by Keith Clark, President, ClarkNFlying@aol.com

**W**ow, it's April and that means it's spring. You can thank whoever you believe created it! How's that for politically correct? But, I'll thank God it's here. For many of our members, spring means it's time to drive again!

I hope you all enjoyed last month's events. The St. Pat's party was a great event. Nikki Pesavento did a wonderful job putting it together for us. The Concours School and Chili tasting event was our biggest to date. I got there a little late but I understand that the attendance was over two hundred and there were over forty chili cooks in the contest. That's a hill of beans, no pun intended. There were about thirty kids also enjoying the day, which we hope will be the future of the club.

Our thanks to Pat & Bonnie Yanahan, Patty & Jim Jacisin, Pete & Karen Hackenson and AJ Tiller for putting together another great event. Maybe some of you who brought Chili to the event would like to share your recipes. Try putting them up on the web?

I'm writing this article early in March so I'll have to report on the rest of the March activities later.

Like I said, April is time to drive. If you're thinking of entering into Club Racing, make sure you attend the Racers workshop. You do not have to commit to anything during this event. It is an information workshop on what you'll need to know about Club racing and how to get you and your car prepared for it. We also have our first Rallye this month, which by the way I'm still the worst Rallye participant in the club, but I'm still planning on trying again. I saw my old Rallye navigator Heather "Bird" O'Bryan at the Concours school. She was my only hope for a win this year, but it looks like last place for me again. We have our autocross school, which everyone should attend; it's as simple as that. The school is a very popular event and if you're looking for the chance to have some fun with your car, you have found the right place. Try it, you'll like it.

I'm going to get a little ahead of myself, but for those of you who remember "karting for a cause" watch out this year, it's returning at a whole new level you'll read more later but be ready. That's it for now, remember to contact Ed Barnicle if you want to get involved with Road America. He is handling the volunteer list this year. I hope to see you at an event. ■

## Behind The Scene

by Scott Adleman, Editor in Chief & Maria Mendoza Adleman

**T**he weather is warming and I'm sure you are all anxious to exercise your finely engineered vehicle. With a full schedule ahead, that shouldn't be a problem.

I had many a plan to be very active this coming year, but it looks like that will not be the case. My wife and I will be adopting our first child this month. The implications are many. As I understand it, free time will be severely diminished—so much so that I doubt I will make any two-day track events. I may be lucky to get a Wednesday or two at Blackhawk, or a Saturday of autocrossing. Learning how to rallye this year will also be postponed.

While life may be placed on hold on the PCA activity side, there is an interesting three-week trip ahead of us.

Our adoption will be taking place in Kazakhstan. Where on earth is Kazakhstan, you might ask? Well, the Caspian Sea borders the west end of Kazakhstan. On the east end is China. To the south of the Kazakhstan are some other 'stan' countries—Turkmenistan, Uzbekistan, and Kyrgystan. To the north of Kazakhstan, and neighboring it everywhere else along the country's meandering boundaries, is Russia. We will be picking up our son in the town of Ust-Kamenogorsk. Life will be changing dramatically for us, but we are looking forward to this next adventure: parenthood.

Now, back to PCA business. We are in need of cover photos, writers (any Porsche-related topic will do), and event volunteers. Think about how you can best contribute and let us know. ■

# THE EXCHANGE

A Division of Semersky Enterprises

The Midwest's Largest Volume Porsche Dealer  
Including The Largest Selection of New & Pre-Owned Vehicles  
Over 23 Years of Experience Serving Chicagoland Porsche Owners



**Boxster**



PORSCHE



**Cayenne**



PORSCHE



**911 Targa**



PORSCHE



**Carrera 4S**

## THE EXCHANGE

A Division of Semersky Enterprises

2300 Skokie Valley Rd.

Highland Park

**(847) 266-7000 [www.porschexchange.com](http://www.porschexchange.com)**

Monday-Thursday 9a-8p Friday 9a-6p Saturday 9a-5p

# So You Want to go Racing

The national PCA Club Racing program marked its 11th year in 2002 and the Chicago Region held its 10th club race at Road America. There are now well over 100 members of the Chicago Region that hold club racing licenses. Most of these members made the jump to club racing with only informal help from other members with racing experience.

We have received several requests from new club racers and those considering club racing for some coaching to help them with their transition from driver's education to club racing. So for those ready to make the next step:



## Chicago Region's New Racer School

**When:** Saturday, April 12, 2003, 9am – 4pm

**Where:** River Run Club  
4204 Clearwater Lane  
Naperville, IL 60564

**Cost:** \$35 (includes lunch)

**Who:** Experienced drivers considering their first club race in 2003 or 2004, or new club racers interested in accelerating their learning curve

This school is not structured for new or novice drivers with only a couple of days of on-track experience. We will assume that you have basic driving skills, understand vocabulary such as "turn-in", "apex" and "track-out", in addition to concepts such as the friction circle, heel-and-toe, threshold breaking, the correct "line", and weight transfer.

We will discuss PCA Club Racing license guidelines, personal preparation, and recommendations for minimal car preparation. We will also review the requirements outlined in the PCA Club Racing rule book for personal safety equipment and car modifications required for participation.

The agenda will also include a walk-through of what to expect at your first club race: racecar technical inspection, safety equipment inspection, novice racer orientation meeting, driver's meeting, the 13/13 rule, practice, practice starts and "fun" race, qualifying, and the race.

We will also look at strategies and tactics for: car setup, learning a new track, using your practice sessions to your best advantage, what to do during qualifying, and how to handle the various parts of the race.

**If you are interested, please send in the registration form below.** If you have topics that you would like to see covered, put them in the space on the registration form or call or email us.

John Ruther: 847-304-5515 john@northstarmotorsports.com  
Greg Turek: 630-904-0800 gregturek@att.net

### Directions:

From I-88: Exit at Rt. 59, go South 7-8 miles to 103rd St, turn left, go 1 mile to Book Rd, turn right, go 0.1 miles to 104th St, turn left on 104th St, go 1/2 mile to Clearwater, turn right to the River Run Club.

From I-355: Exit at Boughton Rd., go West 8 miles to Plainfield-Naperville Rd. (Boughton ends), turn right, go 1/2 mile to 104th St., turn left, go 1/2 miles to Clearwater Dr., turn left to the River Run Club.

From I-55: Exit at Weber Rd, go North 2 miles to 111th St, turn left, go 2 miles to Plainfield-Naperville Rd, turn right, go 1 mile to 104th St, turn left, go 1/2 miles to Clearwater Dr, turn left, to the River Run Club.

Chicago Region's New Racer School Registration Due By 4/1/03

***On a separate piece of paper, please take a few minutes to tell us a little about your car and your track experience.*** Provide your name, complete address, phone number, car model, modifications, the run group you normally drive in at Chicago Region events, how many years you have been participating in Driver's Education events, total number of track days you have completed, which tracks have you driven, and typical lap-times. Also tell us what you want to learn from this school and any specific topics you would like to see covered (this last one is IMPORTANT!!!):

**Make checks payable to: PCA Chicago Region**

**Mail to: New Racer School  
4231 Colton Circle  
Naperville, IL 60564**

# Spring is Sprung Rallye

Sunday April 13

Time Registration: 10:30 a.m.  
Drivers Meeting: 11:30 a.m.  
First Car Off: 12:01 p.m.

Place: Tones Road House  
Countryside, IL  
708-245-3188

Last year our picture gimmick rallye was so well received that we decided to apply the picture concept to a TSD rallye. A photograph will depict each decision point with a written instruction under the photo telling you which way to proceed.

It will be nearly impossible to get lost on the rallye. There will be plenty of speed changes to differentiate the men from the boys.

The rallye will end at the Stonecutters restaurant in the Lemont. We will have a private dining room in the basement as of this writing. I am planning a buffet dinner at 5 p.m.

## Direction to Tones Road House

### From the North:

**294 south Exit at St. Louis exit. Pay 15 cent toll, take Joliet road exit 2 mile to Brainard. Tones is on the SW corner.**

### From the West:

**155 east exit Joliet road (left, exit 276 C) Proceed east on Joliet 2 miles to Brainard.**

### From the East:

**155 West. Exit LaGrange Road North 1 mile to Joliet, left West on Joliet 1/2 mile to Brainard.**

### From the South

**I 294 North. Exit Wolf Rd (St. Louis Exit), Take Wolf Road north to First light (Joliet), Right (east) on Joliet 2 miles to Brainard.**

## Cost \$20.00 per car

Make checks payable to PCA/Chicago

Mail check to:

Peggy gallagher  
11156 Indian Woods Drive  
Indian Head Park, IL 60525  
(708) 784-0784 (Home)  
bbabies@aol.com

As of this writing I believe dinner will be around \$18 for a great buffet.

## *Autocross Volunteers/Event Coordinators needed*

*We are looking for experienced autocrossers to host an event for our upcoming season. Please contact Mike Gallagher at 773-929-8108 or Shawn Young at 630-205-0055*

# THE MIDSHIP REPORT ©

## Tiresome Process

by John Miller [Boxster\_S@veryspeedy.net]

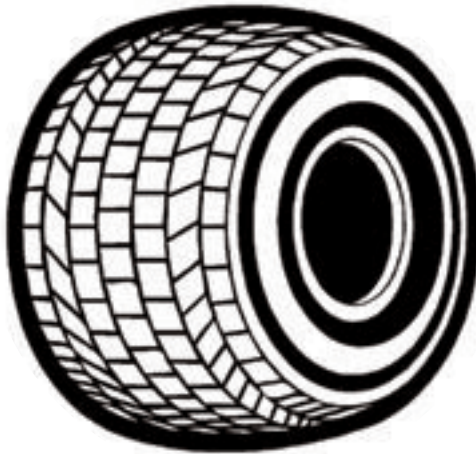
I hate my Boxster. Strong words from The Boxster Zealot, I know, but this is my current state. I drove it to the office on one of the few (the only?) nice days in late February, and by the time I returned home (about 10 miles), I had concluded that I can't stand driving it. And the reason is simple. But fixable. But not inexpensively fixable. And the first wiseguy to tell me that I have no right to complain about the expenses, ("after all, you can afford a Porsche") gets a smack in the mouth. As my pal Jack puts it, "I don't know how these other people do it, but for me it's all smoke and mirrors". I'm not printing money in the basement (yet) and I didn't get a Porsche by not watching the nickels and dimes.

**Q: Where does it end? A: At the back of the car.**

As you may already know by now, I didn't buy snow tires for the Boxster. What some of you also know and are probably darned sick and tired of hearing: the rear tires (Continental-Sport Contact I's) are shot. Not 'shot' like, "I should think about replacing them in the next 1000 miles", but 'SHOT' like, "I should have replaced them 500 miles ago as they appear to be slicks". And thus the reason I hate driving the car. So I'm on a new quest: Decide on tires. Buy tires. Get tires. Get tires mounted and balanced. Decide if car should get alignment. Try not to go broke in process. Wonder why tires last only 10,000 miles. Repeat. Often.

The quest has led to long and fascinating (ok, fascinating to me) discussions on tires and what's BEST versus what's Best-for-Me. The Boxster Boards (986board.com, Babblers.org, Forums.Rennlist.com, etc.) had tons of discussion/debate, but it seems to come down to 3 choices. The absolute hands down best (by consensus) are the Bridgestone Potenza S-02's and newer S-03's. In this case, 'best' is also synonymous with 'money is no object'...a series of words not rolling off my tongue anytime soon. But as I said, there

were 3 choices. Another top choice is the Kumho Ecsta ---the latest incarnation being the Supra 712. People rant about these. Comparisons have been done and the Kumhos are generally regarded as having 90-95% of the performance of the Bridgestone S-02/03's at 60% of the cost. That's a concept that I warmly embrace. And the third of the top 3? Well, it's not exactly a specific tire. Lots of personal opinions out there make you think this was some sort of religion: "The Pirelli P-Zeros are great", "The Michelin Pilots are tops", "The Yokohama AVS give the best performance...but the most noise", and so on. So you may have a setup that favors one of



these others more than the Bridgestones or the Kumhos, and I won't argue the point. One final 'consensus' about tires: I have yet to find anyone that thinks the Continentals that many Boxsters came with are worth darn.

So it's Kumhos. And where to find them? Several local and national places deal in them. On the basis of cost, The Tire Rack online (www.tirerack.com) offered the lowest price, even when I factored in shipping. And Tire Rack will 'drop ship' the tires sending them directly to a tire installer of your choice. And that's when I hit a bump in the road. I started looking for a place to install the tires. Again, an easy process..... easy,

if money is no object. I visited a few places that were recommended on the Tire Rack web site. Most of the places seemed competent and professional, but some were not. This is, of course, critical. I'm not handing over a \$1500 set of alloy rims to a couple of guys that are reading the instruction book for the bead-breaker machine while they experiment with my new tires. And the more places I went to, the higher the costs would climb. I also found it curious that 95% of the places I went to wanted to know what type of car it was (regardless of my asking directly: "How much to have 4 new 18" tires put on my alloy wheels, taking off the old ones, and then balancing the new ones?"). The lowest I found was a major nation chain that would do the mounting and balance for \$14 each. The downside to this place was that it appeared to be a lightly trained chimp operating the tire machines. I quit 'shopping' when the toll reached \$50 per tire to mount and balance (plus \$2 per tire to dispose of the old ones). Hmmmm. The Kumhos (fronts) cost \$112 each. What kind of NUTCASE would I be to agree to something like \$52 per tire?

**Q: Where does it end? A: At The Tire Rack.**

It was like a cast-iron skillet to the skull. I was bending the ear off one of our wiser PCA members (Lee Lichtenstein), about my tire plight, when he looked at me and said "Why don't you go to Tire Rack". Wasn't he listening? I AM buying them from Tire Rack. I just can't find a place to have them sent to for installation. So he repeated it: "Why don't you go to Tire Rack". THUNK. Good thing I only use my head for storing rocks. Tire Rack is in South Bend, Indiana. It's 1 hour 45 minutes from my house, and as Lee pointed out, it will probably cost less to drive there than to pay for shipping. THUNK, THUNK, THUNK. I called Tire Rack and a very helpful sales rep confirmed the tires were in stock and that installation AND balancing would be \$15. No appointment necessary.....also words that I warmly embrace. And then it snowed.

**Continued On Page 33**

# General Member- ship Meeting

1/19/2003



Bindy and Richard Bittermann



Young Max Girard has something to say and won't give up the mic



Scene Editor, Scott Adleman, enjoying his pizza



Chow time!



Dave Swanson and son David



Carl Walstad & Chuck Lamantia



Archive Historian John O'Keefe IS alive and well!



Director & Road America/TRAC coordinator, Pete Hackenson



Lily, Greg (club webmaster), and Jasmine Gulik



Pizza prep



Mike Webb, Henry Ng, and Ly & Randy Kretschmann



Carl Walstad & Chuck Lamantia

# AUTOCROSS DRIVER'S SCHOOL

**SUNDAY APRIL 27**

**MAYWOOD PARK 8600 W. NORTH AVENUE**

If you plan to participate in our autocrosses or in our driver's education events at Blackhawk Farms Raceway, Elkhart Lake and GingerMan, you should attend this first driving event of the year. Our Autocross School is a must event for new members and anyone who just bought his or her first Porsche!

What is an autocross? An autocross is a competition event requiring precision and skill negotiating a tight course marked by rubber pylon cones. From tight, low speed slalom sections to short bursts up to 60 MPH, the action is fast and furious. Quick reflexes and finesse are more important than high horsepower. An autocross abuses your nerves more than your Porsche, so it will not destroy your budget or your Porsche. Beware that autocrossing is habit forming and may lead to an addiction to speed. This kind of speed is a good thing.

We offer a ninety-minute class discussing the fundamentals of high performance driving. Following the classroom session, you will receive personal instruction at the skid pad, braking practice, slalom and ninety degree turn exercises. Finally, we will coach you as you drive an autocross course at your own speed.

Pre-registration is required because lunch is included in the registration fee and must be ordered in advance.

Late Registration: Entrants registering after Wednesday, April 23 or registering at the event site may not have lunch available. Snell 1990 helmets are required and a few loaner helmets may be available. Our Scene advertisers, Northstar Motorsports and Moto Persona can provide you with the properly sized new helmet you need. Please be prepared to display a valid driver's license

## Schedule

8:15 a.m.	Registration and Technical Inspection Opens
9:30 a.m.	Classroom Session (Tech Inspection of entrants' cars will continue)
11:30 a.m.	Lunch
12:00 a.m.	On Track Driver Instruction at skid pad, slalom, turn and braking areas
3:00 a.m.	Autocross Course with on-track instruction

First Driver \$30.00 Member

or \$35.00 Non-Member Guest - Member Must Be Present

Second Driver \$15.00 Family Member

or \$35.00 Non-Member Guest - Member Must Be Present

or \$30.00 Member Sharing Car With Anther Member (Register as two First Drivers)

Please register by mail. Email is okay with check mailed separately. (Checks payable to PCA-Chicago Region)

To: Ed Leed 37 Lakeview Dr. Barrington, IL 60010

Email Leedlast@Hotmail.com Questions? Call 847-382-6911 before 10:00 PM please

Driver 1 \_\_\_\_\_ Member/Guest \_\_\_\_\_ Phone Number \_\_\_\_\_

Driver 2 \_\_\_\_\_ Member/Guest \_\_\_\_\_ Phone Number \_\_\_\_\_

Total Enclosed \$ \_\_\_\_\_

# MOTO PERSONA

*Put your personality in motion!*



### APR

Announcing...APR's revolutionary Enhanced Modular Chipping System (EMCS) for the Porsche 996 Turbo. EMCS software takes your Turbo to over 475 hp and over 500 lb-ft of torque, with programming that allows selection of chipped, stock, or valet modes right from your cruise control. Call for more details on this unique product.



### Car Care

Moto Persona has everything you need to keep your Porsche looking its best. We offer only the finest in car care from Zymol, P21s, Clay Magic, 303, Meguiar's and more. We also have all the brushes, towels, and other accessories to produce concours-quality results. If you don't have time to detail your own car, let us do the work for you. Call today to schedule a Premium Detail service.



42 Yorktown Convenience Center  
Lombard, Illinois  
**630.627.MOTO**



[www.motopersona.com](http://www.motopersona.com)

**Convenient Hours**  
Mon-Thurs 10-9  
Fri 10-6  
Sat 10-4

**Preferred Pricing  
For Club Members!\***

\*Excludes services and some special-order items

## CHICAGO SCENE

# Help Wanted

We are now looking for volunteer contributors. If you have a knack for writing and telling stories we would like to talk with you. We need people to submit articles on events they attend. Obvious candidates are active members from each event category: Autocross, Concours, Social, Tech and Track.

Contact Scott at 847-390-8666 - W or 847-696-1477 - H

# BLACKHAWK EXPERIENCED DRIVERS ED.

## WEDNESDAY, MAY 7TH

### First Driver

Year/Car Make/ Model/ Permanent Car Number

Phone

E-mail

(circle ALL applicable) Member Non- Member-Guest of: \_\_\_\_\_

Run Group: [Instr] [A] [B1] [B2] [C]

Prior Experience:

### Second Driver (same car)

(circle ALL applicable) Member Non- Member-Guest of: \_\_\_\_\_

Run Group: [Instr] [A] [B1] [B2] [C]

Prior Experience:

Pre-registered Entrance Fees: Check # \_\_\_\_\_

Member First Driver - \$160.00 \_\_\_\_\_

Family Member-2nd Driver - \$80.00\* \_\_\_\_\_

Non-Member - \$160.00 \_\_\_\_\_

Total \_\_\_\_\_

\* The \$80.00 fee only applies to 2nd family member whol drives the same car as the first driver.

Make check to PCA- Chicago Region and Mail to:

Nikki Pesavento - Blackhawk Registrar

2 South 430 Canterbury Court

Glen Ellyn, IL 60137

(630) 469-1546

e-mai:kapesave@attglobal.net

Here it is, the first track event of the year. Blackhawk is a great road course, *with a newly resurfaced track for 2003*, only 90 minutes from home. **This May 7th event is for Experienced Blackhawk drivers only.** Since most Blackhawk events are sell-outs, pre-register as early as possible to assure a spot. Waiting lists will be used to fill any open spots.

Most Blackhawk events are sell-outs, so pre-register as early as possible to assure a spot. Waiting lists will be used to fill any open spots. Cancellations & refunds will be honored until 9 p.m. on the Monday prior to the event.

**Mandatory clothing for all drivers at this event includes: a Snell SA 1995 or 2000 Helmet, long sleeve cotton shirt, long pants, socks, all made of non-synthetic materials, and closed toe shoes.** Recommended but not mandatory are: driver's suit, driving gloves, driver shoes and a protective neck brace all made of Nomex or similar fire-resistant material, as well as a mounted fire extinguisher. Please check the date on your helmet now, as it will be inspected during the Tech Inspection at the track. **If you and your car do not pass Tech Inspection, you will not be able to drive.** You will be required to show a valid drivers license (no tickets accepted) along with a valid PCA Membership at registration.

You can save time at the track by bringing your car to a recognized Porsche Dealer or Porsche Specialty Shop for mechanical inspection and having them complete, sign and stamp the Chicago Region Tech Inspection Sheet. Review the NEW Updated Year 2003 Tech and Safety Requirements – there are changes from the prior year! **Pay particular attention to your brake pads and fluid, as Blackhawk is very hard on the brake system!**

Blackhawk Concession Stand serves breakfast from 9 a.m. until 10 a.m., lunch from 10 a.m. until 1:30 p.m. The Accessories Store has gas (leaded & unleaded Race only), air, and showers that are open all day.

#### General Schedule:

- 8:00 a.m. - Registration & Tech Open
- 9:00 a.m. - Mandatory Drivers' Meeting
- 4:30 p.m. - Last Car off Track

Contact Event Chairman: Pete Hackenson (630) 655-4661, 1629 (Home)  
P. Hackenson@attbi.com

**Directions: Follow I-90 W to Rockton Rd. exit.**  
**Turn left (west) and follow Rockton Rd. 5.5 miles to Prairie Ave.**  
**Turn right (north) on Prairie Ave. and proceed 1.5 miles to track on left.**  
  
**\* Mobil station 2 blocks south of Rockton Rd. on Blackhawk Blvd.**

FOR MORE INFORMATION ON TRACK EVENTS, SCHEDULES, TECH & SAFETY REQUIREMENTS INFORMATION  
USE THE WEB AT [WWW.PCA-CHICAGO.ORG](http://WWW.PCA-CHICAGO.ORG).  
FOR MORE BLACKHAWK INFORMATION GO TO [WWW.BLACKHAWKFARMS.COM](http://WWW.BLACKHAWKFARMS.COM)

# BLACKHAWK NOVICE DRIVERS' ED.

## WEDNESDAY, MAY 14TH

Blackhawk is a great road course, *with a newly resurfaced track for 2003*. This high-speed 1.9 mile track has eight turns and is located in Rockton, IL, only 90 minutes from Chicago. **This May 14th event is for Novice Drivers and Instructors only.**

Most Blackhawk events are sell-outs, so pre-register as early as possible to assure a spot. Waiting lists will be used to fill any open spots. Cancellations & refunds will be honored until 9 p.m. on the Monday prior to the event.

**Mandatory clothing for all drivers at this event includes: a Snell SA 1995 or 2000 Helmet, long sleeve cotton shirt, long pants, socks, all made of non-synthetic materials, and closed toe shoes.** Recommended but not mandatory are: driver's suit, driving gloves, driver shoes and a protective neck brace all made of Nomex or similar fire-resistant material, as well as a mounted fire extinguisher. Please check the date on your helmet now, as it will be inspected during the Tech Inspection at the track. **If you and your car do not pass Tech Inspection, you will not be able to drive.** You will be required to show a valid drivers license (no tickets accepted) along with a valid PCA Membership at registration.

You can save time at the track by bringing your car to a recognized Porsche Dealer or Porsche Specialty Shop for mechanical inspection and having them complete, sign and stamp the Chicago Region Tech Inspection Sheet. Review the NEW Updated Year 2003 Tech and Safety Requirements – there are changes from the prior year! **Pay particular attention to your brake pads and fluid, as Blackhawk is very hard on the brake system!**

Blackhawk Concession Stand serves breakfast from 9 a.m. until 10 a.m., lunch from 10 a.m. until 1:30 p.m. The Accessories Store has gas (leaded & unleaded Race only), air, and showers that are open all day.

**General Schedule:**

- 8:00 a.m. - Registration & Tech Open
- 9:00 a.m. - Novice Classroom
- 9:35 a.m. - Mandatory Drivers' Meeting
- 4:30 p.m. - Last Car off Track

Questions? Contact Event Chairman:

**Dan Gallagher (708) 784-0784 (Home)**  
bbabies@aol.com

**Directions: Follow I-90 W to Rockton Rd. exit. Turn left (west) and follow Rockton Rd. 5.5 miles to Prairie Ave. Turn right (north) on Prairie Ave. and proceed 1.5 miles to track on left.**

**\* Mobil station 2 blocks south of Rockton Rd. on Blackhawk Blvd.**

**First Driver**

Year/Car Make/ Model/ Permanent Car Number \_\_\_\_\_

Phone \_\_\_\_\_

E-mail \_\_\_\_\_

(circle ALL applicable) Member Non- Member-Guest of: \_\_\_\_\_

Run Group: [Instr] [Novice]

Prior Experience: \_\_\_\_\_

**Second Driver (same car)**

(circle ALL applicable) Member Non- Member-Guest of: \_\_\_\_\_

Run Group: [Instr] [Novice]

Prior Experience: \_\_\_\_\_

Pre-registered Entrance Fees:	Check #	_____
Member First Driver - \$160.00		_____
Family Member-2nd Driver - \$80.00*		_____
Non-Member - \$160.00		_____
Instructor - \$25.00		_____
Total		_____

\* The \$80.00 fee only applies to 2nd family members who drive the same car as the first driver.

Make check to PCA- Chicago Region and Mail to:

Peggy Gallagher  
11156 Indian Woods Drive  
Indian Head Park, IL 60525

**(708) 784-0784 (Home)**  
bbabies@aol.com

**FOR MORE INFORMATION ON TRACK EVENTS, SCHEDULES, TECH & SAFETY REQUIREMENTS INFORMATION USE THE WEB AT WWW.PCA-CHICAGO.ORG. FOR MORE BLACKHAWK INFORMATION GO TO WWW.BLACKHAWKFARMS.COM**

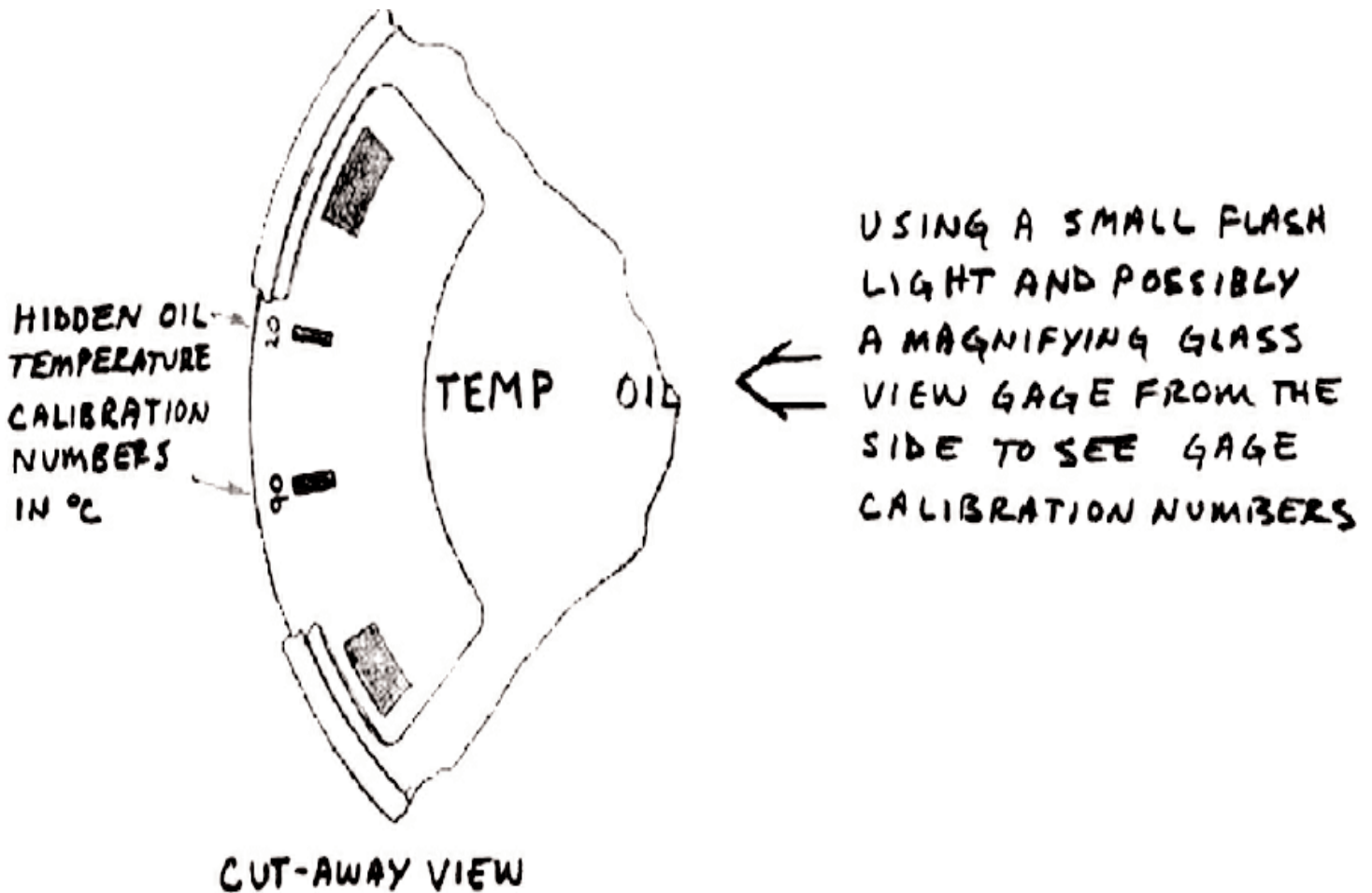
# Reading a 911 Oil-Temperature Gage

Michael Budinski, Niagara Region PCA

For many years, Porsche 911s used a VDO oil-temperature gage without any digits—just several dashes and a red zone. Without any numbers, it is difficult to accurately determine the temperature of the engine oil.

Although direct reading gages (and sending units) are available (after market), these gages are expensive (about \$100.00) and require installation. I recently learned a trick to determine the exact temperature scale on a 911 VDO oil-temperature gage. As shown in the figure, very small numbers are printed on the left side of the oil gage scale just out of view. These numbers are temperature calibration values for the gage (in Celsius). Each gage is individually calibrated and the temperature scale varies from gage to gage.

Reading these numbers requires a small flashlight, good eyesight (or a magnifying glass) and a very flexible neck. However, once you locate the scale, fiducial marks may be transferred onto the top of the gage to provide reference temperatures. During normal operation, the 911 engine operates between 180 and 250°F (82-121°C).



EMMONS



Premium Car Care Products  
Zymöl® *Factory Detailing*™ Centre  
Gifts (and Gift Certificates)

Apparel

- Caps
- Shirts
- Jackets
- Custom Embroidery

Accessories

- Car Covers
- Floor Mats

10% Discount  
to PCA Members

10 to 5 Mon. - Fri. / 10 to 4 Sat



100 E. ROOSEVELT ROAD • VILLA PARK, IL 60181 • 630-832-1411

[www.emmonscoachworks.com](http://www.emmonscoachworks.com)

# Body Werks of Barrington

**For the Finest in  
PORSCHE, MERCEDES and BMW  
Work and Painting**

Desi Vinczen • 126 Cook Street • Barrington, IL  
381-9144

# Sunday, May 11

## Autocross One

*One Fast Mother-Maywood Park*

Presented by Mike O'Meara & Tony Koufos

### **Come out for the 1st autocross event of the year.**

Put your Porsche to test on the huge parking lot at Maywood Park. Pack a lunch and something to drink.

**Pre-Register** by mail to create a speedier Event.

Include permanent drivers number.

You will be FN-Flying at this event.

<b>Time</b>	9:00-10 AM	Registration and Technical Inspection Opens
	10:15 AM	Tech is closed
	10:15 AM	Drivers meeting
	10:30 AM	First car off-Let the fun begin.
	3:30 PM	Trophy presentation

<b>First driver</b>	\$30.00 member	\$35.00 non-member guest - <b>member must be present</b>
<b>Second driver</b>	\$15.00 Family Member	\$35.00 non-member guest - member must be present
		\$30.00 member sharing car with other member

**Directions:** It is 8600 West North Ave in Maywood, between 1<sup>st</sup> Ave and 5<sup>th</sup> Ave. You can exit the Eisenhower Expressway at 1<sup>st</sup> Ave and head north to North Ave. Turn left on North Ave and Maywood Park is on the left. Enter from 5<sup>th</sup> Ave.

Please register by mail. (Checks payable to PCA-Chicago Region) **Please pay by check.**

To: Michael Gallagher  
2418 N. Seminary.  
Chicago, IL. 60614

Email: [autocross@pca-chicago.org](mailto:autocross@pca-chicago.org) Questions? call 773-929-8108

**General Rules:** Snell 1990 helmets are required. Short/Long pants and shirt. 18 years or older with valid drivers license. Member may bring one guest to event. Guest may drive members Porsche or a two-door sports car. Associate Member driving a non-Porsche is considered a guest. Maximum two drivers per car. Trophy with first car you drive. Member must be present with guest.

**Driver 1** \_\_\_\_\_

Member/Guest \_\_\_\_\_ Phone Number \_\_\_\_\_  
Car Model/Number \_\_\_\_\_

**Driver 2** \_\_\_\_\_

Member/Guest \_\_\_\_\_ Phone Number \_\_\_\_\_  
Car Model/Number \_\_\_\_\_

**Total Enclosed** \_\_\_\_\_

Please be prepared to display a valid driver's license

If you don't pre-register, which would save time, please pay by check at registration to speed the event up.

Day of the event questions-call Shawn Young-630-205-0055



# Road America Drivers' Education 2003

Friday, May 23—Sunday, May 25, 2003

On behalf of the Chicago Region, we invite you to register for the first of two events that we will be hosting this year at historic Road America in Elkhart Lake, Wisconsin.

Road America consists of fourteen turns, three long straights, and four total miles of winding track cut through the Kettle Moraine area of southern Wisconsin in Elkhart Lake. Not only is it the longest road course in North America, but one of the most exciting and picturesque racetracks in the world.

Registration for this event is open to all Porsche sports car drivers including new Drivers' Education participants. For drivers who have never been on a road course before, our high level of instruction will allow you to better learn the capabilities of your Porsche within a controlled environment. Novice drivers who wish to participate in this event should return the completed registration form with payment today as space is limited to 50 novices and this event is traditionally a sell out! We strongly recommend that all new Drivers' Education drivers first attend the Autocross Driver's School on Sunday, April 27<sup>th</sup> as well as the Novice Driver's School at Blackhawk Farms Raceway on Wednesday, May 14<sup>th</sup>, in preparation for driving this challenging track.

Novice drivers will begin their weekend by attending a mandatory Novice Orientation Meeting on Thursday evening, May 22<sup>nd</sup> at 8:00 pm sharp at Siebkens Resort located on Elkhart Lake. Friday, May 23<sup>rd</sup>, will be devoted EXCLUSIVELY to new Drivers' Education participants and their instructors. Instruction includes participation in a classroom training session led by professionals from the Skip Barber Program, followed by controlled car handling exercises with the help of SCCA Instructors. All new Drivers ED participants will also be assigned a PCA Instructor who will work together throughout the weekend to help improve his or her driving skills.

The format for Saturday and Sunday will include experienced drivers and will consist of four run groups as follows:

- |              |   |
|--------------|---|
| Group 1      | Our most experienced drivers - usually, but not always, the fastest cars.   |
| Groups 2 & 3 | Our next most experienced drivers - somewhat slower than Group 1.           |
| Group 4      | New Drivers' ED participants and others - still fairly new to Road America. |

Before you arrive at the track, it is your responsibility to thoroughly check your car and complete a Chicago

Region Tech Sheet. Although you may perform this tech inspection yourself, we strongly recommend you consider using a mechanic familiar with what it takes to properly prepare a Porsche for use on the track. In either case, please pay close attention to the specifics detailed on the Tech Sheet, especially concerning brake fluid and brake pads. A copy of the 2003 Tech Sheet is in this newsletter.

For Groups 1 thru 3, a five point harness with race seat or a six point harness with stock or race seat is mandatory for the driver, and if you wish to have an instructor ride with you, the same type of harness/seat requirements must be installed on the passenger side. Novice Class only may run stock Porsche seats and three point belts. Mandatory clothing for this event includes a SNELL approved SA 1995 or newer helmet, long sleeve cotton shirt, long pants and socks - made of non-synthetic material, and closed toe shoes. Recommended, but not mandatory are driver's suits, driving gloves and shoes, and a protective neck brace all made of Nomex or similar fire-resistant materials, and a properly mounted fire extinguisher. As a reminder, please check the date on your helmet NOW as it will be checked at tech inspection. Remember that if you do not pass tech inspection, you will not be permitted to drive! For more information on safety equipment for the driver and vehicle please reference the Chicago Region 2003 Tech Sheet.

The event registrar will assign car numbers prior to the event and ALL cars must display those numbers on each side of the car and on the front hood. If you would like a permanently assigned Region Number, please contact Ed Leed, leedlast@hotmail.com. Numbers must be at least 6 inches tall on the sides and 8 inches tall on the hood. Shoe polish is not acceptable! If the corner workers cannot read your car's numbers at speed, you will be black-flagged and not be permitted out again until the deficiency is corrected. Once you have received your number assignment from the registrar, we recommend that you find a local sign shop that can create inexpensive static cling numbers.

All cars that participate in this event must not exceed the maximum Road America noise restriction level of 108 decibels. Please ensure that your car is in compliance with this sound limit in advance. Monitoring equipment will be used throughout the weekend.

Approximately two weeks before the event, participants will receive a confirmation packet via email or US mail that will include a copy of the Rules of Road America. Please take the time to review them in detail before you arrive at the track. As these rules are set by

mornings for **ALL DRIVERS**. Each of these meetings will begin at **7:30 AM sharp**. Any driver missing any of these meetings that address safety and policy issues for the weekend will not be allowed to drive. Regarding safety, we ask all participants to provide some personal medical information as part of the registration form. The Chicago Region believes in taking a proactive approach to your personal well-being and this information will be made available only to the track physicians in the remote possibility it is needed. All medical information will be destroyed after the event.

Spaces for this event are limited and we recommend that you pre-register early! Prior to April 1<sup>st</sup> we will accept pre-registrations from Chicago Region members **ONLY**. After that date, pre-registration will open to all Porsche sports car drivers on a first-come, first-serve basis. Notification (by e-mail or US-mail) of acceptance will be provided by the registrar. If you are planning to attend this event, this would also be a good time to make your room reservations as many of the hotels in and around Elkhart Lake will fill up quickly for the holiday weekend. A listing of places to stay is provided in this newsletter. Please note that we have a block of rooms reserved for the Chicago Region Porsche Club at the Osthoff Resort, Victorian Village and AmericInn in Plymouth. You must mention that you are a Chicago Region PCA member.

On Thursday, May 22<sup>nd</sup>, from 4:00 pm until 7:00 pm, Registration for New Drivers Education Participants and Instructors will be open at Siebkens Resort in Elkhart Lake. Registration for all other drivers will be at the Registration Building at Road America from 4:00 pm – 7:00 pm on Friday, May 23<sup>rd</sup> and on Saturday, May 24<sup>th</sup> from 7:00 am – noon. All drivers must present a valid driver's license and a current PCA membership card at registration. The Tech Crew will also be on hand to scrutinize your car and helmet. If your car is not available for tech on Thursday or Friday afternoon, it must pass inspection on Saturday morning following the driver's meeting. No cars will be allowed to run without a tech inspection sticker!

If you are looking for an easy way to get around the pits and track viewing areas, consider renting a golf cart. Golf cart rental reservations must be made by April 30th. Please note that you will be responsible for any damage and a minimum age of 16 years is required to drive the carts.

The registration fee includes a **R.A.D.E. 2003** shirt. Please indicate your shirt size on the pre-registration form. Extra shirts, at \$15 each, may be ordered if payment and size are included with the registration fee. A very limited supply of shirts will be available for purchase during the event.

If you would like additional information regarding this event, we have established a 24-hour Information Hotline at 847.604.4795. Please leave a message and the appropriate committee member will return your call. Committee members may also be reached at the phone numbers and e-mail addresses listed below.

If you are hesitant to put your car on the track but are curious about the event, join us at the track. A great way to learn about any Chicago Region event is to volunteer to help out. We are always in need of volunteers. At track events, helping out in registration, at tech, or on grid is a great way to make new friends and see lots of great cars. Either fill out and return the Volunteer Form or call Keith Clark (630.690.3381).

**Returning this year** is low speed track touring after lunch on Saturday and, time permitting, on Sunday. This is your chance to take the family out in the family minivan, SUV, or Cayenne and show them the beauty of Road America! We will ask for a \$10 donation for this privilege, with all proceeds going to charity.

Join us over Memorial Day Weekend at Road America for one of the best track events of the season!

Pete Hackenson and Keith Clark  
**R.oad A.merica D.rivers' E.ducation**

### **R.oad A.merica D.rivers' E.ducation 2003 Committee Members**

Pete Hackenson	Event Chairman	847.604.4795	roadam.pca-chicago@attbi.com
Keith Clark	Event Co-Chairman	630.690.3381	ClarkFNFlying@aol.com
Ed Barnicle	Volunteer Coordinator	630.323.2963(before 8:30pm)	ebarnicle@dolphincartage.com
Mary Anne Nowakowski	Event Registrar	847.929.1831	nowakowskim@permapipe.com
John Ruther	Chief Driving Instructor	847.304.5515	John@northstarmotorsports.com
Toby Duckett	Tech Coordinator	630.248.7680	Toby@mc2fyi.com
Todd Conforti	Safety Coordinator	847.382.9653	TLControls@aol.com

## PLACES TO STAY WHILE VISITING ROAD AMERICA

52 Stafford—An Irish Guest House  
Plymouth, WI—920.893.0552

The American Club  
Kohler, WI – 800.344.2838

AmericInn Motel - Plymouth  
Plymouth, WI—920.892.2669  
**Mention Chicago Porsche Club  
for Block Reservation Rates**

AmericInn Motel/Suites  
Sheboygan, WI—920.208.8130

Baymont Inns  
Sheboygan, WI—920.457.2321

Best Value Parkway Motel  
Sheboygan, WI – 800.341.8000

Breeze Inn to the Chalet Motel  
Mequon, WI—414.241.4510

Brownstone Bed & Breakfast  
Sheboygan, WI—920.451.0644

Comfort Inn  
Sheboygan, WI – 800.228.5150

Grand Hotel  
Sheboygan – 920.458.1400

Harbor Winds Hotel  
Sheboygan, WI – 920.452.9000

Hillwind Farm B & B  
Plymouth, WI – 877.892.2199

Holiday Inn Express  
Sheboygan, WI—920.451.8700

Imperial Motel  
Sheboygan, WI – 920.458.3578

Inn on Woodlake  
Sheboygan, WI – 800.919.3600

Krupp Farm Homestead B&B  
New Holstein, WI—414.782.5421

Lakeland College  
Howards Grove, WI—920.565.1248

The Osthoff  
Elkhart Lake, WI—800.876.3399

Pinehurst Inn  
Sheboygan Falls, WI—920.467.4314

Plymouth Inn  
Plymouth, WI—920.893.5623

Ramada Inn Downtown  
Sheboygan, WI – 800.909.8770

Riverview Spa Suites  
Sheboygan, WI – 920.451.9576

Rochester Inn  
Sheboygan Falls, WI – 920.467.3123

Safe Harbor Inn  
Fond du Lac, WI – 920.923.0223

Saukville Super 8 Motel  
Saukville, WI—414.284.9399

Select Inn Fountain Park  
Sheboygan, WI – 800.909.8770

Sheboygan Super 8 Motel  
Sheboygan, WI—920.458.8080

Siebkens Resort  
Elkhart Lake, WI—920.876.2600  
**Mention Chicago Porsche Club as  
all room are reserved for us.**

Sippel House  
Elkhart Lake, WI—920.876.3110

Victorian Village  
Elkhart Lake, WI—920.876.3323

Windy Mare  
Kiel, WI—920.894.2284

Wisconsin Aire Motel  
Random Lake, WI—920.994.4501

Yankee Hill Inn B & B  
Plymouth, WI—920.892.2222

### Campgrounds

Cedar View Camper Rentals  
Kiel, WI—920.894.7884

Hoef's Resort Campground  
Cascade, WI—920.626.2221

Plymouth Rock Camping Resort  
Plymouth, WI—920.892.4252

Mark & Dean's Camper Rental  
Kiel, WI—800.894.7181

Westward Ho Camp Resort  
Glenbeulah, WI—920.526.3407

We need your help to make the **R.oad A.merica D.rivers' E.ducation 2003, May 23th—25th**, the best it can be. Your help in the past has done just that. Please help out again this year. If you are interested, please send your work assignment preferences, name, address, phone, e-mail and/or fax number to:

**Ed Barnicle**  
**3 Hanover court**  
**Burr Ridge, IL 60527**

**phone: 630-323-2963 (before 8:30 PM Please)**  
**fax: 773-767-0186**  
**e-mail: ebarnicle@dolphincartage.com**

Name: \_\_\_\_\_ Phone: \_\_\_\_\_

Address: \_\_\_\_\_ e-mail: \_\_\_\_\_

Fax: \_\_\_\_\_

Tech / Registration / Anywhere you need me

Thursday pm / Friday am / Friday pm / Saturday am / Saturday pm / Sunday am / Sunday pm



**PCA Chicago Region  
Road America Drivers' Education 2003  
May 23 - 25, 2003**  
Pete Hackenson, Event Chairman  
Keith Clark, Event Co-Chair

REGISTRAR USE ONLY	
First Driver	Second Driver
Group _____	Group _____
# _____	# _____
Shirt _____	Shirt _____
_____	_____

First Driver Name _____		Second Driver Name (must be in same car) _____	
Address _____		Address _____	
City _____	State _____	Zip _____	
Eve Phone with AREA CODE _____		Day Phone with AREA CODE _____	
E-mail address _____		E-mail address _____	
Shirt size: S M L XL XXL XXXL		Shirt size: S M L XL XXL XXXL	
PCA Member Region _____		PCA Member Region _____	
Current PCA Membership # _____		Current PCA Membership # _____	

Novice driver	<b>Please circle one:</b>	Novice driver
Experienced driver		Experienced driver
Instructor	<i>Must be approved by Chief Driving Instructor John Ruther</i>	Instructor
<b>First Driver Requested Run Group</b>		<b>Second Driver Requested Run Group</b>
<Fastest 1 2 3 4 Slowest>		<Fastest 1 2 3 4 Slowest>
Chicago Region (previously assigned) Permanent Car # _____		Chicago Region (previously assigned) Permanent Car # _____
If none, Requested # _____		If none, Requested # _____
Porsche Year/Model _____		Color _____

To help us better classify car/driver combinations, please specify your driving experience, including number of track days per year, professional driving schools attended, and tracks driven with typical lap times:

Please list other performance enhancing modifications to help us classify your car: \_\_\_\_\_

*All drivers must attend the Skip Barber classroom instruction unless they attended at a previous Road America event, or have very strong driving credentials and receive approval from the Event Chair or Event Chief Driving Instructor John Ruther.*

Yes	No	Did you receive Skip Barber instruction at a previous PCA Chicago Region Road America event?	Yes	No
Yes	No	If "No" above, circle "Yes" box indicating you will attend the Friday Skip Barber session, or circle "No" indicating you wish to be exempted. ( <i>Exemption must be approved by an Event Chair <u>or</u> Event Chief Driving Instructor John Ruther.</i> )	Yes	No

**There may be reserved parking spaces set aside for some participants based on size requirements. Please help us by specifying your parking needs for trailers or semis of more than 30'. No other reservations will be honored. Call 847.604.4795 for info.**

**With Group? No Yes Group Name \_\_\_\_\_ Group Contact \_\_\_\_\_**

Please specify how many: Semi \_\_\_\_\_ Dimensions \_\_\_\_\_ ft x \_\_\_\_\_ ft

Trailer \_\_\_\_\_ Dimensions \_\_\_\_\_ ft x \_\_\_\_\_ ft

Other (be specific) \_\_\_\_\_ Dimensions \_\_\_\_\_ ft x \_\_\_\_\_ ft

*On an additional sheet of paper, please sketch your optimum set-up of trailer, awning and tent space requirements.*

**This is a two-page form. Please complete second page.**

### DRIVER MEDICAL INFORMATION

*For second driver, please photocopy this sheet, complete, and submit with event registration form*

Name \_\_\_\_\_ Age \_\_\_\_\_ Birth Date \_\_\_\_\_

List any medication currently used (including eye drops) \_\_\_\_\_

Contact lenses? Y N Last tetanus shot date \_\_\_\_\_ Blood type \_\_\_\_\_

Allergies (including asthma, hay fever, medications or drugs) \_\_\_\_\_

List any current Medical Conditions \_\_\_\_\_

Describe any medical changes since your last physical \_\_\_\_\_

Physician's Name \_\_\_\_\_ Phone \_\_\_\_\_

**NOTE: This information is kept confidential and is to be utilized only in the event of a medical emergency. This form will be destroyed after the event.**

**POLICIES:** This registration form must be signed. Your signature below signifies acceptance of these policies.

- Ⓢ The PCA Chicago Region reserves the right to deny registration for or admittance to this event or request the removal from this event of any person as it sees fit.
- Ⓢ Incomplete Registration forms will not be accepted and will be returned with no registration place held. Late fees will apply.
- Ⓢ The Chicago Region's policy regarding fees incurred and damage caused at the track is that the party or parties responsible will be required to reimburse Road America for any fees or physical damage caused to the track or its facilities, including (but not limited to) the clean up and removal of any spilled oil, coolant, brake fluid, discarded tires, or late exit. These are not covered in your registration fee.
- Ⓢ I agree to indemnify and hold harmless the organizers of this event and their agents with respect to the condition and preparation of my car or any subsequent failure or damage to my car or its occupants as a result of such failures. I acknowledge that at all times I remain solely responsible for the safety and road worthiness of my car.
- Ⓢ I give permission to any hospital, institution or physician to furnish any information regarding my condition.

Signature \_\_\_\_\_ Date \_\_\_\_\_

***In Case of Emergency, Notify***

Name \_\_\_\_\_ Phone/cell phone/pager \_\_\_\_\_

Relationship \_\_\_\_\_ At track? Y N At local hotel? (name) \_\_\_\_\_

**R.A.D.E. 2003 FEE SCHEDULE**

**EARLY REGISTRATION**      **LATE REGISTRATION**  
*Postmarked by 4/27/03*      *Postmarked after 4/27/03*

<b>First Driver</b>				<b>NO REFUNDS FOR CANCELLATIONS AFTER MAY 14, 2003</b>  <b>A \$25.00 PROCESSING FEE WILL BE DEDUCTED FROM ALL REFUNDS.</b>  <b>(CANCELLATIONS MUST BE IN WRITING)</b>
___ Novice	Friday, Saturday & Sunday	\$ 370.00	\$ 400.00	
___ Instructor	Friday, Saturday & Sunday	\$ 295.00	\$ 325.00	
___ Other First Driver	Saturday & Sunday	\$ 295.00	\$ 325.00	
<b>Second Driver (family or affiliated PCA member only)</b>				
___ Novice	Friday, Saturday & Sunday	\$ 185.00	\$ 215.00	
___ Other Second Driver	Saturday & Sunday	\$ 150.00	\$ 180.00	
<b>Second Driver (non-family/non-affiliated PCA member, non-PCA member)</b>				
___ Novice	Friday, Saturday & Sunday	\$ 370.00	\$ 400.00	
___ Other Second Driver	Saturday & Sunday	\$ 295.00	\$ 325.00	
<b>Driver(s) Fees</b>			\$ _____	
<b>Extra shirt(s)</b>	S M L XL XXL XXXL # _____	@ \$ 15.00 EACH	\$ _____	
<b>Golf Cart Rental</b>	# _____	@ \$ 250.00 EACH	\$ _____	
<b>Make checks payable to PCA Chicago Region</b>			<b>TOTAL enclosed</b> \$ _____	

Mail this two page registration form and check payable to **PCA Chicago Region** to:

**Mary Anne Nowakowski, R.A.D.E. 2003 Registrar**  
**527 South Rammer Avenue**  
**Arlington Heights, IL 60004**

*Joe Rizza Porsche*

**The Fastest Growing  
Porsche Dealer in T**



PORSCHE 2002 GT2 TURBO • 1 OF ONLY 100 MANUFACTURED • BLACK/BLACK • IN STOCK! •



**JOE RIZZA**

**PORSCHE®**

# g The USA!



- Great Selection & Prices
- Pre-Driven Porsche Inventory
- Factory Trained & Certified Technicians
- State-of-the-Art Service Department
- Porsche Parts Inventory
- Free Service Loaner



## *Professional Porsche Consultants*



Aaron Zelinski  
Porsche Sales Mgr.

Anthony Rizza  
Sales & Finance

Frank Torres  
Porsche Sales

George Serritella  
Porsche Sales

IMMEDIATE DELIVERY!

# A



159th Street & 80th Avenue  
**ORLAND PARK**  
**708 403-0300**

SHOWROOM HOURS: Daily 9-9:30 & Saturday 9-7:30



[www.rizzacars.com](http://www.rizzacars.com)

The Chicago Region proudly presents ...

Friday, August 29th - Monday, September 1st  
Labor Day Weekend

Road America in Elkhart Lake, WI



**Club Racing**

Friday *optional* 'TEST & TUNE' (DE rules)  
Saturday (practice)  
Sunday (**Sprint Races**)  
Monday (**90 minute Enduro Races**).

**Drivers' Education**

Friday - Sunday  
Monday optional

**Race car and PCA Concours and Dinner**

Saturday evening at Siebkens Resort in Elkhart Lake, WI. (Police escort to/from track)

**TRAC 2003 Event Information** will be available June 2nd on the Chicago Region's web page at [www.pca-chicago.org](http://www.pca-chicago.org) or from the registrar at 847.604.47985 or at [www.roadam.pca-chicago@attbi.com](mailto:www.roadam.pca-chicago@attbi.com) (No requests accepted before June 2nd.)

Registrations with postmarks prior to July 1st will NOT be accepted.

Harley Davidson will be celebrating their 100-year anniversary in the Milwaukee area the same weekend. **Make your reservations now!** Arrangements have been made with the following hotels. You must mention the PCA Chicago Region.

Siebkens Resorts (headquarters hotel)  
(no minimum/entire hotel reserved)  
Elkhart Lake 920.876.2600

AmericInn Motel (4 night minimum)  
Plymouth 920-892-2669

Victorian Village (3 night minimum)  
Elkhart Lake 920.876.3323

The Osthoff (5 night minimum)  
Elkhart Lake 800.876.3399

**See you at TRAC 2003!**

# Just the Details: What is Carnauba

By David Bynon, San Diego Region (from The Windblown Witness)

Carnauba is a vegetable fat obtained from the leaves of a Brazilian palm tree called the "Tree of Life" (Copernicia Cerifera). Pure Carnauba, in its natural state, is harder than concrete. One of its most interesting properties is that it swells and closes its pores when exposed to water.

Having a great affinity to water, Carnauba has the ability to retain oil and has excellent gloss properties making it applicable in many industries, including cosmetics, automotive and food. In cosmetics, Carnauba is widely used in stick applications. Carnauba is the hardest natural wax and has lustrous composition making it the leading choice for food coatings, pharmaceutical coatings and polishes. Number One Grade Carnauba varies from a very pale yellow (white), through a greenish brown (yellow).

Carnauba Wax is exuded by the leaves of the Copernicia Cerifera palm to conserve the moisture within the tree and its leaves. The "Carnauba Palm" grows in the northern and northeastern parts of Brazil along the river banks, valleys, and lagoons where the soil is dark and fertile. The tree needs very little water to grow, is very prolific and attains a mature height of 40-50 feet. The natives in the surrounding area use the various products of the tree for many necessities in their lives; hence the name "Tree of Life." Of interest is the fact that only in northern Brazil does the Carnauba Palm produce wax. Palm leaves containing the wax are harvested from the trees during the period from September to March. The color and quality are governed by the age of the leaves, as well as the care used in processing the wax. The leaves are soaked in kerosene to soften the wax, resulting in a thick liquid that can be poured into molds for shipping.

Being a natural plant by-product that does not react with paint, Carnauba provides a very hard barrier over your car's surface to protect against airborne contaminants such as acid rain, bugs, tar, road grime, salt, and bird droppings. Carnauba also dramatically reduces paint oxidation by diffusing (refracting) UV and infrared radiation from the sun. Typical Carnauba waxes contain 3 to 5% Carnauba wax (not necessarily Brazilian No. 1 Carnauba) by volume. The greater the concentration of Carnauba the greater the level of protection and the higher the level of shine.

All of the quality waxes Autopia Car Care offers contain 30% or more Brazilian No. 1 Carnauba by volume. The greater the concentration of Carnauba the greater the level of protection and the higher the level of shine.

All of the quality waxes Autopia Car Care offers contain 30% or more Brazilian No. 1 Carnauba by volume.

David Bynon operates the website Autopia-Carcare.com.

Visit this site for more information about car care and as a source for most of the products and tools seen in this column.



# **Chicago Porsche Club**

## **General Summary of Autocross Rules for 2003**

### **GENERAL CONDUCT:**

1. Unsafe behavior will not be tolerated.
2. No alcohol or drugs. Any use during event and you will be asked to leave.

### **REGISTRATION:**

1. All vehicles besides factory built racecars must have streetable exhaust, DOT tires and be an appropriate vehicle for competition. Racing slicks may be used in modified classes. Please consult the PCR's for further rules and clarification.
2. A Chicago PCA member may bring only one participating guest to each event. The guest may drive the member's car or a 2-door sports car. Member and guest must sign in together.
3. The Chicago PCA member shall assist their guest with tech, etc.
4. Drivers must be at least 18 years old with valid drivers license. Licensed 16 year old sons and daughters of PCA members in good standing may participate but only after waiver forms for the Junior Participation Program (JPP) are approved by national and the Chicago region PCA. Please refer to national website ([www.pca.org](http://www.pca.org)) for further information regarding the JPP program or call autocross coordinators for forms.
4. Each competitor must complete a tech sheet.
5. Registration closes 10 minutes before the drivers meeting begins. Once closed, registration for the event is over.
6. All entrants must be available to work during the event

### **SAFETY**

1. Recommended Helmets: SA90, SA95, SA00 Snell 90
2. Acceptable Helmets: M90, M95, M00
3. Original Factory Seat Belts are acceptable. Six Point Belts are recommended. See Autocross tech sheet or PCR's for more information.
4. Remove all loose objects from interior, glove box and trunk. (Check under seats.) Floor mats and hubcaps must be removed. Lock glove box.
5. Convertible/Targa/Boxster tops must be up or on.
6. No open shoes are allowed. Please use driving or gym shoes.
7. Full-length pants, long sleeved cotton shirts, cotton socks shoes are mandatory unless safety chair or event chairmen decides otherwise on the account of hot weather.

### **COMPETITION**

1. A competitor may drive a maximum of two cars at an event. Eligible to trophy in only the first car you drive. You must complete your runs for the day in your first car before driving a second car. Members have priority on trophies.

2. All participants must compete in their run group as determined by class. Any deviation will be considered a DNF.
3. Members who share the same car during the event may drive in the same class. They must use the "two car driver lane" and have their car in the grid line on time.
4. No competitor can have back to back runs without a 3 minute cool down or 3 cars run between their last run. An event official may place the competitor in a different group without any assessed penalty in order to accomplish this.
5. No passengers are allowed in cars during an Autocross
6. Cars are self-classed. The PCR rulebook is available to class your car correctly.
7. You must compete in the car or cars you registered in. In the event of mechanical failure, you may compete in another registered competitors car in your registered class or classes with event chairperson permission.
8. Hitting the timing gear is an automatic DNF.
9. Any pylon that is knocked out of the designated box results in a DNF.

### **ELIGIBILITY:**

1. Any Porsche that passes tech is able to participate.
2. A member in good standing may bring a two door sports car other than a Porsche to an event. Examples of two door sports car would be a VW GTI, 3 Series BMW, Miata, Mustang etc
3. Only a member may bring a four door sports sedan/wagon to an event. Such situations require pre-approval by the Autocross Directors and the PCA safety committee.

### **CLASSES:**

- P1: 356, 914(except 915/6), 912, 924 (except S & T)
- P2: 924S, 924 T, 944 (except S2 & T)
- P3: 911 (2.0, 2.2, 2.4), 914/6, 928
- P4: 944 S2, 944T, 968, 930, Boxster
- I1: Improved 4 cylinders
- P5: 911 (2.7, 3.0, 3.2)
- P6: Boxster S
- P7: 911 (3.6- 964 & 993)
- P8: 996
- I2: Improved 6 & 8 Cylinders
- M1: Modified 4, 6 & 8 Cylinders
- Masters: Porsche Production Class only with driver 55+

Bumping Schedule: Three cars necessary to make a class except in modified. P1>P2>P3>P4>I1>P5>P6>P7>P8>I2>M1

# 911 FENDER SEAL REPLACEMENT



Fender to cowl seal. Photo: M. Budinski



Remote location make the socket head screws challenging to loosen. Photo: M. Budinski

By M. Budinski, Niagara Region PCA

I have noticed at local PCA concours events, many nicely prepared 911s with severely faded and cracked front fender to cowl seals. After rectifying the same situation on my '87 911, I decided to write a brief technical article on replacing this seal.

I ordered my seals from Vertex because they are a very cost competitive supplier. I think the parts cost a whole \$5. In general, though, I like to buy any polymeric or elastomeric parts directly from PCNA. I believe the factory is more diligent about accrediting reputable suppliers for polymeric components than aftermarket suppliers.

The steps to replacing this seal are quite simple.

Loosen the socket-head cap screws inside the fender

cowling as shown below (accessed by opening the door). Using relatively long fingernails grip the old seal and pull upwards. It should readily slide out. If not, pull on the lip of the fender to help open the slot as you pull on the seal.

Use the old seal to measure the length of the new seal and cut as required. Clean the slot and fender area with a damp rag and then follow up with a cleaning wax (e.g. 3M Light Oxidation Remover). Once clean, coat the trimmed seal with a water-soluble lubricant (e.g. 3M Vinyl and Leather Conditioner), align the seal in the slot, and work it in. Pull on the fender lip to help open the slot. Keep wiggling and pushing until the seal is properly placed. Retighten the socket head screws and wipe off any excess lubricant.

# Pride, Performance, Passion



## Select Pre-Owned Sports Cars

2215 W. Belmont Avenue  
Chicago, IL 60618  
773.325.1690  
midwestperformancecars.com



## Address Change?

Name (s):

Old Address:

**NEW Address:**

Home Phone:

Fax:

Work Phone:

E-mail:

Mail, Fax or E-mail the above information to: Debbie Leed, 37 Lakeview Drive, Barrington, IL 60010-1949 FAX-847-382-3562 (8:00 a.m. until 8:00 p.m. only), [leedlast@hotmail.com](mailto:leedlast@hotmail.com)

# Permanent Car Numbers

By Ed Leed

As you prepare for the upcoming autocross and drivers education season you may decide to get a permanent number for your Porsche. Although the RADE, Blackhawk or GingerMan registrar may have given you a number, it is simply a temporary one for that specific event, not your permanent number. Another member may already own the number you are using and will likely be rather disappointed to see his number on your car at a future event. So you will need a permanent number of your own. It makes the registrar's and your life easier. Since we have banned shoe polish numbers because they are virtually unreadable by corner workers and timing and scoring you have the choice of vinyl adhesive numbers, static cling numbers, magnetic numbers or painted numbers. Painted numbers seem to have a rather serious commitment attached to them that many Porsche owners are fearful of making, so that leaves the others. Porsche owners who are afraid to attract attention (what?) may want to remove their numbers after an event. Magnetic, vinyl adhesive or static cling numbers may be the answer. Static cling numbers have a habit of blowing off at speeds that are really fun, so leaves magnetic or vinyl adhesive numbers. Either of these choices has their positive and negative features. Magnetic numbers are the ultimate in flexibility but can cause microscopic scratches and occasionally may blow off. It's a good idea to tape your magnetic numbers so they do not move around and cause scratches or blow off. Vinyl adhesive numbers won't blow off and can be removed after an event. They nevertheless are expensive mistakes if you tear them when you take them off. Numbers made from contact paper are cheap alternatives, by the way. To keep your number from year to year, you must use it at least twice over a two-year period.

The list below will tell you which numbers are available. Some Porsche model numbers may be available but the easy numbers like 333 or 777 are not. If your favorite number is not on the list, it's taken. Be aware that I get number requests on a daily basis this time of year, so just because a number appears on the list does not mean it will still be available by the time this list is printed. As for two digit numbers, they're taken. To earn a two-digit number you must be a regular entrant, worker or event chairman.

Please email me a list of your three to five choices for your three-digit car number in preference order. You will need a number for each person who will drive the car at an event. Remember to include the year and model Porsche that the number

<b>100-200</b>	<b>241</b>	<b>354-355</b>	<b>475</b>	<b>667-672</b>	<b>769</b>	<b>889</b>
<b>101</b>	<b>245</b>	<b>359</b>	<b>477-488</b>	<b>674-675</b>	<b>772</b>	<b>891-893</b>
<b>103</b>	<b>248-250</b>	<b>362-363</b>	<b>492-493</b>	<b>677-685</b>	<b>776</b>	<b>894-899</b>
<b>106</b>	<b>253</b>	<b>365-368</b>	<b>495-498</b>	<b>687</b>	<b>779</b>	
<b>110</b>	<b>257-258</b>	<b>370-372</b>		<b>688</b>	<b>784-786</b>	<b>900-999:</b>
<b>121-122</b>	<b>265</b>	<b>374-380</b>	<b>500-599:</b>	<b>689</b>	<b>790-794</b>	<b>905</b>
<b>127-129</b>	<b>267-268</b>	<b>382-388</b>	<b>502</b>	<b>692</b>	<b>796</b>	<b>909</b>
<b>134-135</b>	<b>271</b>	<b>392-393</b>	<b>504-505</b>	<b>694-695</b>	<b>798-799</b>	<b>917</b>
<b>147-149</b>	<b>273-274</b>	<b>397-399</b>	<b>507-508</b>	<b>697-698</b>		<b>921</b>
<b>153</b>	<b>276</b>		<b>510</b>		<b>800-899:</b>	<b>924</b>
<b>157</b>	<b>279</b>	<b>400-499:</b>	<b>512-514</b>	<b>700-799:</b>	<b>801-807</b>	<b>926-927</b>
<b>161</b>	<b>281-286</b>	<b>402-403</b>	<b>520</b>	<b>701-703</b>	<b>809</b>	<b>930</b>
<b>166-167</b>	<b>288-291</b>	<b>405-407</b>	<b>522-523</b>	<b>705-706</b>	<b>811</b>	<b>932-933</b>
<b>174</b>	<b>295-298</b>	<b>410</b>	<b>527-528</b>	<b>709-711</b>	<b>813</b>	<b>937-938</b>
<b>178</b>		<b>413</b>	<b>530-548</b>	<b>714</b>	<b>818-819</b>	<b>940-941</b>
<b>186-187</b>	<b>300-399:</b>	<b>416-417</b>	<b>550</b>	<b>719</b>	<b>824-825</b>	<b>945</b>
<b>191</b>	<b>300</b>	<b>423</b>	<b>552-553</b>	<b>722-725</b>	<b>827-829</b>	<b>947-948</b>
<b>193</b>	<b>303</b>	<b>426</b>	<b>558-566</b>	<b>728</b>	<b>831-832</b>	<b>949-950</b>
<b>197</b>	<b>306-309</b>	<b>429</b>	<b>569-571</b>	<b>730</b>	<b>834-838</b>	<b>954</b>
	<b>319</b>	<b>433-439</b>	<b>573-577</b>	<b>732-735</b>	<b>840-843</b>	<b>956-958</b>
<b>200-299:</b>	<b>321-323</b>	<b>441</b>	<b>580-584</b>	<b>737-738</b>	<b>846</b>	<b>967</b>
<b>208</b>	<b>326</b>	<b>445-448</b>	<b>586</b>	<b>740-746</b>	<b>853-860</b>	<b>970-976</b>
<b>214</b>	<b>332</b>	<b>450-453</b>	<b>593-599</b>	<b>748-749</b>	<b>862-866</b>	<b>978-985</b>
<b>215</b>	<b>335-338</b>	<b>455-456</b>		<b>751-754</b>	<b>868-869</b>	<b>987-988</b>
<b>220</b>	<b>340-344</b>	<b>463</b>	<b>600-699:</b>	<b>756</b>	<b>872-877</b>	<b>990-991</b>
<b>226</b>	<b>347</b>	<b>465-470</b>	<b>656-661</b>	<b>758-761</b>	<b>879</b>	<b>994</b>
<b>234-235</b>	<b>349</b>	<b>473</b>	<b>663-665</b>	<b>766</b>	<b>883-887</b>	<b>996</b>

# DE TECH News

DE Tech will operate a trial program for the 2003 driving season. We need to maintain safety concerns while we hope to reduce the time spent in the Tech Line.

In order to expedite the Tech process we have developed a program where experienced veterans with a long record of good Tech and Safety practices will be allowed through the Fast Tech line along with cars that have been professionally Teched. The Technical Coordination Safety Committee will select the drivers that will be allowed to participate in this program.

To participate in this program you will need to agree to completely tech your vehicle prior to the day of the event and bring your completed tech form to the Fast Tech Line. **We do not want you to tech your vehicle at the track on the day of the event.**

## Trial Program Facts:

Select drivers will be giving an annual Tech Sticker.

- This does not mean you can get on the track directly.
- You will be allowed to go to the Fast TECH line.
- You will need each time;
- You must tech your vehicle prior to the event and bring the completely filled out Tech form to the event
- Register, sign the wavers and get arm band
- Not complete and you will go to the Full Tech line
- You will present your completed tech form and show your Annual Tech Sticker
- You will be asked to show your brake lights
- You may be asked by Tech to check additional items
- You may stay in the car
- You will get the necessary Event Stickers
- You will not get out on the track without Event and/or Tech Stickers

If you are not selected for the program, you can also get in the Fast Tech Line if you have a completed and fully filled out Tech Form from an approved Porsche Service Shop with a date, stamp, and signature. You cannot do it yourself.

All other drivers for each event without Tech Forms will need to stay in the full Tech Line for a complete inspection.

Thanks to those of you that signed up to work DE or Autocross Tech at the general meeting in Naperville. Both Mike and I appreciate your support. You are very important to every driver's safety and we cannot work events without your support.

## Any Questions???

Toby Duckett, Tech Chair, [Toby@mc2fyi.com](mailto:Toby@mc2fyi.com) and be sure to place in e mail comments PCA TECH or I may not open it!!

# PCA - Chicago Region Board Meeting Minutes

FEBRUARY 7, 2003

**Voting Members Present:** K. Clark, J. Jacisin, M. Nowakowski, J. Stephensen, E. Barnicle, P. Hackenson, S. Young, C. Bittman

**Coordinators Present:** C. Bittman, P. Hackenson, T. Conforti, K. Clark, J. Jacisin, J. Stephensen, V. Miller, E. Leed, T. Duckett, G. Gulik, J. O'Keefe, P. Silver

**Members Present:** K. Konrath, S. Bernacki, M. Bouk, P. Radja

Meeting Called to Order by K. Clark at 8:00 PM at the Park Ridge VFW Hall, Park Ridge, IL

**Secretary: M. Nowakowski**

Presented minutes from November 2002 Board Meeting.  
Motion to Accept Minutes: E. Barnicle, Second: P. Hackenson  
Approved: Unanimously

**Treasurer: J. Stephensen**

Presented Chicago Region Financial Statement dated 2/7/03.  
Motion to Accept Financial Statement: E. Barnicle, Second: S. Young  
Approved: Unanimously

**President: K. Clark**

Congratulations to V. Miller on receipt of the 2002 Presidents' Award.

**Autocross: S. Young/M. Gallagher**

Presented by S. Young. All dates and sites are booked for 2003. Smaller cones are required to ease in transporting cones to sites. Estimated cost of 200 cones is \$1000. V. Miller has an alternate source of cones, and will get a quote to S. Young by March 2003 Board Meeting. General discussion regarding storage and transport of cones to autocross sites.  
Motion by K. Clark to spend a maximum of \$1000 to purchase new, smaller cones for Autocross use. Second: J. Jacisin, Approved: Unanimously

**Road America: P. Hackenson/K. Clark**

Presented by P. Hackenson. Signed contracts for Memorial Day and Labor Day events have been returned to Road America. Insurance issues have been completed. Application for Memorial Day event is available on the Web site, and will be in the next issue of Chicago Scene. Room blocks for Labor Day event have been secured.  
Contact email for P. Hackenson is P.hackenson@attbi.com

**Blackhawk Farms: D. Gallagher/P. Hackenson**

Presented by J. Stephensen. Blackhawk Farms has increased rate for track rental for 2003.

Presented by P. Hackenson. Applications for first 2 events will be in the next issue of Chicago Scene.

**Gingerman: J. Girard**

Presented by K. Clark. General discussion on including a club race school with classroom and on-track exercises with Club Racers and Zone representation for 2003 event at Gingerman. The Windy City BMW club contacted K. Clark regarding their club race event at Gingerman on August 8, 9, and 10. The Chicago Region will decline their invitation.

**Concours: J. Jacisin/P. Yanahan**

Presented by J. Jacisin. The Chili Tasting/Concours School will be chaired by P. Hackenson, and hosted by Napleton Porsche. Concours I will be combined with Rallye II at Fermi Lab in Batavia. Fermi Lab has requested a \$250 donation for their security personnel. Chief Randy with the Elkhart Lake Police Department has been notified about the Concours at Labor Day.

**Rallye: J. Stephensen/P. Harwood**

Presented by J. Stephensen. Planning for the Rallye School is complete. Rallye masters have been assigned to all rallyes, with the exception of the September rallye. Rallye I will be picture TSD rallye, and will conclude at the Stone Cutter's in Lockport.

**Social: N. Kroll**

Presented by J. Stephensen. The March 2nd Social Event will be held at Quigley's Irish Pub.

**Membership: V. Miller**

Presented 50 new members that have been added to the region since November 2002. Discrepancies between the National and Chicago Region database are being reviewed and resolved. Chicago Region membership currently stands at 1511 members. Request for volunteers to assist in representing the Chicago Region at the Chicago Auto Show Porsche display.

**Technical: T. Duckett**

The March 2003 Spring Tech Session will be hosted by Northstar Motorsports. A trial run of "Annual DE Tech Sticker" will be initiated this season. An article regarding the 2003 Tech Inspection Process will be included in the next issue of Chicago Scene. A separate Tech Box will be provided for Autocross. Mike Hill will chair Autocross Tech. T. Duckett wishes to thank P. Hackenson for support and guidance. The Tech Staff will continue its close working relationship with T. Conforti and the Safety Committee for successful events.

**Charity: D. Coup**

Presented by J. Stephensen. The 2002 charitable donation to Lambs Farm

Continued on page 33

# EUROSPORT

# Racing

WWW.MIDWESTEUROSPORT.COM

WWW.MIDWESTEUROSPORT.COM

**Team Eurosport  
Clients Sweep Sebring  
Good Times & Great Racing**



**Bob Klaskin Loses His Rookie X**



**Tim McKenzie - 1st GT4R - Enduro, 2nd GT4R - Sprint  
Gary Knoblauch - 2nd GT4S - Enduro & Sprint**



**Jason Brown  
1st GT2S  
Sprint**



Stop By & See  
The Remodeled  
Showroom  
& Shop

**Mike Origer - 1st C - Sprint**



**Steve Pattee - 1st GT4S - Enduro & Sprint**



**Chris Ingot - 2nd F - Enduro**

**Your Choice For  
Street & Race Car  
Servicing This  
Spring**

**Midwest Eurosport, Inc.  
104 Irving Park Rd.  
 Bensenville, IL 60108  
630-595-5577**

**Board Meeting Minutes**

Continued from page 31

was \$7598. Charity suggestions for 2003 are requested.

**Property: E. Leed**

General discussion of trailer, and storage and transport of Autocross cones to event sites. E. Leed will explore purchase of smaller trailer and present information at the March 2003 Board Meeting.

**Photography: P. Silver**

November and December 2002, and January 2003, photos are on the web-site. Photos have also been forwarded to the Chicago Scene.

**Historian: J. O'Keefe**

The historical information of the club will need to be relocated. K. Clark has requested that J. O'Keefe obtain pricing and availability of an off-site storage space. History will be reviewed, purged and moved in the spring. Motion by K. Clark to rent a small storage area for club history.

Second: S. Young. Approved: Unanimously

**Webmaster: G. Gulik**

Updates for 2003 events, applications and information are in process on the web page. Real video portion has been updated. It has been recommended that the PCA Chicago Region web-site be moved to a new server. Current professional host sites are approximately \$20 per month.

Motion by K. Clark to move the website to another server.

Second: P. Hackenson, Approved: Unanimously

G. Gulik is recommending that PayPal be utilized for membership and Goodie Store web-site purchases. Motion by E. Barnicle to accept use of Paypal. Second: P. Hackenson. Approved: Unanimously

**No Report**

Vice President: J. Jacisin, Chief Driving Instructor: J. Ruther, Insurance: K. Clark, Timing & Scoring: C. Bittmam, Safety: T. Conforti Goodie Store: K. Hackenson, Chicago Scene: S. Adleman Advertising: S. Shire, Sponsorship: M. MacKonckie

**Old Business:** None Heard

**New Business:**

J. Stephensen indicated that the Chicago Region is currently being charged a \$45 fee for a MasterCard Account. This account will be cancelled.

S. Bernacki indicated that virtual car used at the Fall 2002 Tech Session is available for other club events, and may also be utilized as a simulator to teach other tracks. An article about the event will be sent to the Panorama editor. General discussion regarding turning the in-car video contest into a yearly event. J. Jacisin requested that the virtual car be set up at the Chili Tasting and Concours School at Napleton in March.

**Motion to Adjourn:** M. Nowakowski. Second: S. Young. Approved Unanimously. Adjournment: 9:30 PM

**The Midship Report: Tiresome Process**

Continued from page 7

@#%\*!. I would be hesitant to make a multi-state drive in the snow with good tires. So now, I look out the window every morning and scour the weather forecasts waiting for my chance to gingerly tread across Indiana and get four big, new, happiness filled rubber donuts. Maybe I'll slow down on the way back just enough to get one with chocolate sprinkles to celebrate. Nahhhh.

**MIDSHIP TOURIST-TROPHY**

By the time you read this, at least one MIDSHIP Tourist Trophy will have been awarded. . . .maybe more! I'll post the name or names of the winners here each month if only to prove this is for real.

Coming this June to a State near you.

Illinois. . . hey, THAT'S US! It's the 2003 edition of Porsche Funfest at Tweeks in Effingham, Illinois. The 2002 Funfest (what a BLAST!) is still a fresh memory. Cars, food, swap-meet, fun-runs, you name it, they put on a first rate event. And it's all FREE! This year promises to be even better with a move from July to June 7-8. Go to <http://www.tweeks.com/funfest03.html> and register. DO IT NOW. This is an event you need to attend.

**NEXT MONTH**

Geez, I dunno. . . .lots of distractions around me. Case in point: I lost a friend. I don't mean I misplaced him----and he didn't leave this world, but Ray-the-996 guy has departed for greener pastures. Ray was previously 928-Ray, when, after numerous consultations with your humble (idiot-savant) columnist, he stepped up to a 996. A gorgeous silver coupe that perfectly suited him. Ray got caught up in a corporate downsizing and negotiated a dignified resignation instead of being walked in front of a firing squad. Ray and I constituted our own little Porsche Corral in the office parking lot. I'll just have to 'wing it' for a while.

Of course, when I took the wheels off to clean them before getting the tires, I started thinking about those brake pads...



# WELCOME TO OUR NEW MEMBERS

February 2003



Total Members: 1514, Transfers into Region: 4, Transfers Out: 2

## New Members

Omar Alvarez Park Ridge, IL 2002 Carrera C2	Ted & Donna Eisses Aurora, IL 1987 911 Cab	Jerrold & Joyce Mayster Highland Park, IL 2002 Turbo Coupe	Mike & Nora Rice Inverness, IL 2001 911 Coupe
Michael & Nina Belsky Chicago, IL 1997 911 Cab	Glen Gordon Vernon Hills, IL. 2002 911 Targa	John Miller Lake Forest, IL 1988 911 Targa	Laurie & Doug Sanderson Bloomington, IL 2000 Boxster
Jack M. Borys Cathryn Borys Highland Park, IL 1995 993 Coupe	Scott & Kathy Humphrey Island Lake, IL 1986 930 Coupe	Ken & Scott Noth Schererville, IN 2001 Boxster	Heliodoro Torres Hickory Hills, IL 1990 964 Coupe
James Caruso Deborah Caruso Winnetka, IL 1999 Boxster	Peter & Pattiey Jenkins Highland Park, IL 1970 914/6	Arthur & Eva Ostrowski Barrington, IL 1996 C4S	John & Lara White Lake Forest, IL 1988 951 Coupe
	Bill & Cherly Lee Wheaton, IL 2000 Boxster S	Manish & Suman Puri Streamwood, IL 2001 996 C2Mike &	Ronald & Diane Yehl Crystal Lake, IL 1974 911 Targa

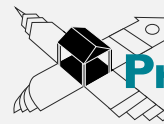
## Transferees

Patrice C Al-Saden Brookfield IL 1999 911
De Lane M Cantrell Palatine IL 1986 951
Joseph S Portera Chicago IL 2002 911
Chris Williams Monee IL 1995 911

## The 2003 Chicago Region Membership Directory

The directory was mailed in February and if you have not yet received it and want to receive it, email a note to Ed Leed at [Leedlast@hotmail.com](mailto:Leedlast@hotmail.com). The directory contains not only the names and addresses of your fellow region members but also the rules for autocross, concours and rallye. We have learned that the U. S. Postal Service has failed to deliver the directory to a few of our members, so if you are one of them, please let us know. Include your current address, especially if you have moved recently.

LEADERS IN SALES, DEVELOPMENT AND CONSULTING



## Property Consultants

**Peter Sygieda**

Consultant

[www.propertyconsultants.com](http://www.propertyconsultants.com)  
[psygieda@propertyconsultants.com](mailto:psygieda@propertyconsultants.com)

1205 West Adams St  
Chicago IL 60607  
Tel 312 733 4444  
Dir 312 492 3225  
Fax 312 492 3425

**R.A. Adams**  
**ENTERPRISES, INC.**

• TRAILERS • HITCHES •  
• TRUCK EQUIPMENT •

• Full Service / Electrical  
• Custom Paint / Graphics  
• Full Line of Accessories

2600 W. RTE. 120, MCHENRY, IL  
(3/4 MILE EAST OF FOX RIVER)

(815) 385-2600

[www.raadams.com](http://www.raadams.com)

OPEN: MON-FRI 7:00 - 5:30  
SATURDAY 7:00 - 1:00

• OVER 400 TRAILERS IN STOCK •  
• FINANCING & NATIONWIDE DELIVERY AVAILABLE •  
• FAMILY OWNED & OPERATED FOR OVER 45 YEARS! •

# GINGERMAN RACEWAY

**OWN YOUR HOME  
30 SECONDS  
FROM THE  
STARTING  
GRID**



CALL DAN 616-207-0913

## 914 Limited



Maintenance, repair, restoration,  
track preparation, new and used parts  
exclusively for your 914  
Brad Mayeur, PCA since 1974  
Peoria, IL. 309-694-1797  
veldiadv@midwest.net fax:309-698-2203  
Pickup and delivery available

# MANNY'S

Servicing, modifying, racing and restoring  
Porsche cars since 1964  
708-333-6606  
By appointment only  
**WE DO IT RIGHT THE FIRST TIME!**



## Fischer Motors, Inc.

SPECIALISTS IN COMPETITION PERFORMANCE SERVICE

- High Performance Engine Work
- Hunter Wheel Alignment
- Race Suspension Tuning & Weight Balancing
- Transmission & Brake Conversions

Besides all sport related upgrades, we are a repair facility for German cars.  
PORSCHE MERCEDES BENZ BMW VOLKSWAGEN AUDI

908 S. Northwest Highway (Rte. 14)  
Between Lake Cook Roads & Dundee Road  
Barrington, Illinois 60010  
(847) 304-8822 - 8823

Weekdays 8 AM - 5 PM

Saturday 8 AM - 1 PM



# Imagine...

# Your Own Private Autobahn!

Introducing the Autobahn Country Club in Joliet... designed to bring you the best of motorsport, leisure and entertainment facilities. The track and facilities of the Autobahn Country Club are being designed to cater to all forms of motorsports, and to provide members with a great environment for racing, touring, concourse and entertaining.

We've enlisted preeminent road course designer Alan Wilson to develop the Autobahn Country Club's Grand Prix track. Alan's work includes the South Carolina Motor Sports Park and the GingerMan Raceway in Michigan. Before becoming a full time motorsports facility designer, Mr. Wilson was a national level competitor in both car and motorcycle racing.

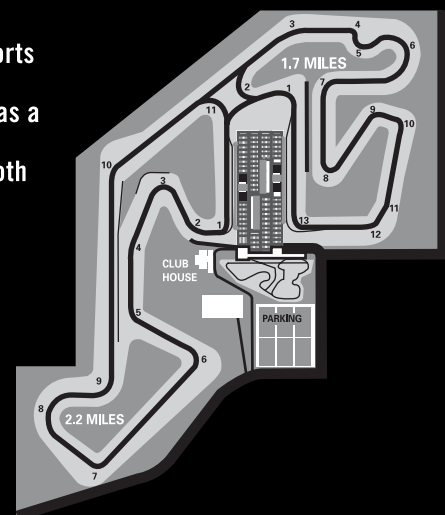
### Track Features:

- 2.2 Mile Track | 11 Turns
- 1.7 Mile Track | 13 Turns
- 4 Mile Track | 22 Turns
- 1 Mile Shifter Kart



Visit our website...

[www.autobahncountryclub.net](http://www.autobahncountryclub.net)



# Spare Parts

This section is a compilation of short pieces from our region, various web sites and other regional sources.



## PCA FACTORY TOUR, THE TREFFEN

### The official PCA visit to Germany and the Porsche factory OCTOBER 5-12, 2003

**HIGHLIGHTS:** Visit to Porsche Museum. Tour of Porsche Factory in Zuffenhausen. Lunch in the Porsche Casino in Zuffenhausen. Hot laps at Weissach. Shopping in the Porsche boutique. Tour of the Porsche Factory in Leipzig. Lunch in the Porsche facility in Leipzig. Visit to Autostadt in Wolfsburg. Visit to the Mercedes Museum.

**INCLUDES:** 7 nights deluxe or first class hotel accommodations. Hotel taxes and service charges. Full or buffet breakfast daily. Welcome reception. Two lunches with beer and wine. Three dinners (3 courses) with beer and wine. Deluxe motorcoach transportation per itinerary. Sightseeing per itinerary. Special Treffen gifts Services of GT&I representative.

**Not included:** Airfare, airport transfers, travel insurance, meals not specified, items of a personal nature.

#### ITINERARY

**SUNDAY, OCTOBER 5:** After having made your own way to Frankfurt proceed to the hotel where you will be pre-registered. The remainder of the afternoon is free for you to get acquainted with the city on your own. There is plenty to see and do! This evening meet your fellow Porsche fans as you gather for a welcome reception and dinner. The local specialties will delight you!

**MONDAY, OCTOBER 6:** Enjoy breakfast in the hotel this morning. Afterward, depart by motorcoach for Wolfsburg, home of AUTOSTADT. After checking in to the hotel you will be free to explore this fascinating auto center at your own pace. Besides a myriad of exhibits and interactive displays from Volkswagen, Bentley, Lamborghini, Audi, and Skoda there are shops and restaurants to suit every taste. The remainder of the day is free.

**TUESDAY, OCTOBER 7:** After breakfast you will have time to experience some more of what Autostadt has to offer. In the early afternoon travel through Saxony to Leipzig, the city of Bach, Goethe, Mendelssohn, and Schumann. After checking in to the hotel you will have time to explore the city and its restaurants on your own. Be sure to visit Thomaskirche where Bach played the organ for several years!

**WEDNESDAY, OCTOBER 8:** After breakfast in the hotel travel to Porsche's Leipzig facility where Porsche Club Coordination has arranged an exciting morning. Included is a visit to the production facility where you will be among the first to observe various stages of Cayenne production up close! Porsche personnel will join the group on site for lunch. A short city overview tour enroute back to the hotel this afternoon will better familiarize you with the city of Leipzig. The remainder of the day is free.

**THURSDAY, OCTOBER 9:** After another wonderful breakfast the coach departs for the 600

kilometer trip to Stuttgart. A lunch stop in a charming German town will be made enroute. Arrive at the Stuttgart hotel in the late afternoon. The remainder of the day is free for you to shop, explore, and have dinner. You'll no doubt enjoy the local Schwabian cuisine that is offered in many restaurants!

**FRIDAY, OCTOBER 10:** PORSCHE CARS\*PORSCHE CARS\*PORSCHE CARS\*. Our friends at Porsche Club Coordination have planned a full slate of Porsche-related activities today. First visit the Porsche Museum where you can also purchase Porsche trinkets. Next, participate in an in-depth tour of the Porsche factory where you will observe the assembly and/or production of engines, bodies, upholstery, etc. Following the tour enjoy a three-course lunch and conversation with Porsche personnel in the Porsche Casino. After lunch travel to Weissach, Porsche's research and development center, where you will have the opportunity to be a passenger (conditions permitting) in hot laps at the Porsche test track! Return to the hotel in the late afternoon. This evening join the fun at a festive dinner hosted by Porsche.

**SATURDAY, OCTOBER 11:** Depart late morning for the Mercedes Museum where you will have ample time to enjoy its outstanding collection. Afterward, continue on to Zuffenhausen for one last visit to the Porsche museum and boutique. Return to the hotel in the late afternoon. Tonight's farewell dinner is fraught with surprises and special treats. Don't miss it!

**SUNDAY, OCTOBER 12:** At breakfast bid 'auf wiedersehen' to your fellow TREFFENITES as you continue your travels in Europe or make your own way to the airport. PRICE: \$1,865.00 per person double occupancy. Single supplement is \$400.00

**THE SMALL PRINCE:** Porsche activities are arranged at the discretion of Porsche AG and are subject to change without notice. GT&I reserves the right to substitute or change other sight-seeing features if necessary.

**POST TREFFEN OPTIONAL TOUR:** A two-night/three-day visit to Zell am See and Gmund in Austria. Includes roundtrip transportation\* from Stuttgart, two nights in Zell am See at the Porsche family castle, a day excursion to Gmund to visit the Porsche Museum and the site of the first Porsche factory, and a multi-course dinner at the Schloss Prielau restaurant prepared by Jorg Worther, Austria's chef of the year. Price TBA. \*Transportation will be via self-drive Porsches provided through the Porsche Travel Club providing there is a minimum 10 participants. Otherwise travel will be via rental car or motorcoach.

**PRE TREFFEN OPTIONAL TOUR:** A one-night/two day visit to Adnau and the Nurburgring. Includes transportation via self-drive rental car, one night hotel accommodations, dinner, breakfast, and a Nurburgring info packet. Price TBA.

For information regarding the October 5 - 12, 2003 Treffen contact Knettie at GT & I Travel 203-426-7833 or karchard@hotmail.com or Bob Miller at 918-369-0453 or millepca@aol.com

# PCA Chicago Region 2002 Tech Inspection Sheet

NAME: \_\_\_\_\_ CAR COLOR: \_\_\_\_\_ RUN CLASS: \_\_\_\_\_  
 MODEL/YEAR: \_\_\_\_\_ ENG. DISP.: \_\_\_\_\_ CAR #: \_\_\_\_\_

Pass Fail **!!! TO BE INSPECTED BY ENTRANT PRIOR TO EVENT !!!**  
**Note Driver/Run Classes: Slower, less experienced driver is Novice Class N, progressing to C, B2, to B1 to A, with A Class the most experienced and faster.**

INSIDE

UNSIDE

ENGINE

1. HELMET, SNELL SA 95 or later required for all Track Events including Blackhawk, Road America, and GingerMan. (Snell SA sticker must be attached inside.)
- 1A. HELMET, SNELL SA or M 90 or later required for all Autocross events (Snell SA or M sticker must be attached inside.)
2. APPAREL - Full-length pants, long sleeved cotton shirts, cotton socks and full coverage shoes are mandatory. Highly recommended, but not mandatory, are drivers' suits, driving gloves and shoes all made of Nomex or similar fire-resistant materials. Arm restraints required for All Open Cars.
3. SEAT BELTS - Original factory installed belts for N, C & B2 Class. Required for all other Classes (and all B class at Road America): Stock Seats must have 6-point, "H" Harnesses without Harness Bar & no "H" with Bar or Race Seat must have 5/6-Point. All securely anchored, metal-to-metal, with large diameter washers on both sides of floor mounting holes. Tunnel side belt mounting only on factory seats. Harness and seats must be equipped the "same" for driver and passenger side (Instructor).
4. FIRE EXTINGUISHER - Recommended but not required. Securely anchored metal-to-metal in reach of driver. BC or ABC rated and fully charged. AFFF or Halon recommended.
5. ROLL PROTECTION - Roll Bar, Cage or Extender using "broomstick rule" required for all A Class. The same Roll Protection is highly recommended although not required for other classes. Any open car (no roof) must run A Class rules. Cabs must have roof in up position and sunroofs must be closed.
6. PEDALS - Free return and in good operating condition. Firm brake pedal.
7. LOOSE OBJECTS - Remove all loose items from trunk and interior, including glove compartment, door pockets, console, mats, etc. Glove box locked. Spare secured or removed (spare adds to structure to certain Porsches).
8. AIR BAG EQUIPPED CARS - No obstructions in front of air bag(s).
9. WINDSHIELD - No major cracks and functional wipers with good blades.
10. MIRRORS - At least one side (two highly recommended) and one securely mounted rear view mirror.
11. GAS CAP - Gasket intact and cap tightened.
12. RUST - No rust or damage to suspension or chassis parts that affect the integrity of the chassis or brakes.
13. FRONT SUSPENSION - No excessive looseness in steering or suspension. Lower trailing arm to radius tight; axle and shock bolt tight. Ball joints in good condition. Tie rods secure. Axle boots and oil seals in good condition. **Warning: 944/968 MUST Check Ball Joint & Control Arms for cracks and binding caused by excessive lowering, larger sway bars and track usage.**
14. REAR SUSPENSION - No excessive looseness. Check half shaft bolts and shock bolts. 914's check fuel pump and lines. No positive camber on any car.
15. WHEEL BEARINGS - Correct adjustment, check for play and proper lubrication, no damaged or burnt bearings.
16. BRAKES - Sufficient brake linings or pads. No rubbing, cuts or abrasions in brake lines. Check rotor condition. Brake pad thickness must be checked periodically for 2mm minimum thickness throughout the high-speed events. Make sure you start with ample brake pad material and/or bring an extra set of pads. It is recommended you start with fresh competition pads properly bedded in.
17. WHEELS - No cracks. No bends. All lug nuts must have 94 - 96 lbs. torque. Valve stem must have airtight cap. Hubcaps and center caps must be removed.
18. TIRES - In good condition. No cracks or bulges. ZR or better required (HR for Autocross only). Minimum tread depth of 3/32" on contact patch area (race tires or shaved performance tires must have at least 1/16" tread wear marker depth and no cord showing). Seek an experienced driver with like car/tires for hot/cold tire pressure.
18. BRAKE FLUID - Level up, must show in reservoir. All cars must have their brake systems flushed with DOT 4 specification or better brake fluid 90 days or less preceding the high-speed event. If another high-speed event is run less than 90 days prior to this event, then the fluid must be flushed again before running.
20. BATTERY (IES) - Securely fastened and in good condition. No acid leaks or corrosion. Check fuel lines under battery trays on 914's. The Positive (+) Terminal on all batteries must be covered by cap or tape.
21. ENGINE - Check for odd sounds and satisfactory exhaust (remember 108db limit at Road America).
22. DRIVE BELTS - Tight and in good condition.
23. LEAKS - No exhaust leaks and leaks of any fluid - oil, gas, brake, or coolant.
24. THROTTLE RETURN - Freely operating and good springs. Check both throttle return springs on CIS cars.
25. BRAKE LIGHTS - All bulbs on both sides and center brake light (if so equipped) must be functional.

## Helmet Requirements!

In consideration of my participation in this event, I have checked the above items and certify that they meet or exceed the requirements. I agree to indemnify and hold harmless the organizers of the event, or their agents, with respect to responsibility for the condition and preparation of my car, or any subsequent mechanical failures or resulting damage to my car or its occupants as a result of any such failures. I acknowledge that at all times, I remain solely responsible for the safety and roadworthiness of my car. I hereby certify that I have no physical or mental problems, which could jeopardize any others or myself if I participate in this event.

ALL OF THE ITEMS ON THIS TECH SHEET HAVE BEEN TESTED AND SERVICED AS DESCRIBED. THE TECH INSPECTOR'S SIGNATURE BELOW DOES NOT IMPLY COMPLIANCE WITH THE ABOVE AND IS ONLY AS WITNESS TO THE DRIVER'S SIGNATURE, WHICH WARRANTS COMPLIANCE.

DRIVER'S SIGNATURE: \_\_\_\_\_ DATE: \_\_\_\_\_

WITNESS TO DRIVER'S SIGNATURE (inspector): \_\_\_\_\_ SERVICE STAMP: \_\_\_\_\_ DATE: \_\_\_\_\_

Revised 2/12 2002

# The Mart

PCA members are welcome to place ads of a non-commercial nature at no charge in The Mart. For non-members, the non-refundable fee for this service is \$15.00 for three months, with checks payable to PCA Chicago Region. Ad material must be received by the 1st of the month for publication in the next month's issue. Publication is subject to space availability and editing. Ads to be placed after the initial three month period must be resubmitted. Please limit ads to 75 words or less. **Please see page one for submission information.**

## For Sale

### Porsche Cars

#### 911/912

**1999 996 Carrera** Full Aero GT3 body, Guards Red, All Power, Full Leather, Carbon-fiber and Aluminum Interior Upgrade, Climate Control, 6-Speed, ABS with Cross Drilled Disks and Black Lacquered Calipers, in-dash CD, Tilt, Cruise, Hood and Trunk Pulls Color Matched to Body by CoachHaus of Barrington, Remote Keyless Entry, Painted Center Caps, New Pirelli P-Zeros, Sport Suspension, PSM System. Garaged, covered, and pampered. Lovingly cared for by a perfectionist and past concours judge, for a great price. Dr. Chris Stout, 847/550-0067, email for photos, \$50,995 [AMJ]

**1997 911 C4S** (993 4WD widebody) coupe, red/black leather, 6speed, 35K miles, exceptional condition records avail. Options: hi-fi system, in-dash CD, motorsound, full power driver's seat, rear wiper, lowered w/Eibach springs. \$54,000 Tony 847-722-4808 tmezcat@earthlink.net [AMJ]

**1997 993 C2S** - Wide Body Coupe. Silver/Black, 6 speed, with 18" Turbo wheels, Painted Porsche logo center caps. Leather seats-Full power driver side. Partial leather dash, 6 disk CD player. 100% stock. Miles 37K. No Smoking, body work Garage kept. Stored winters. New front pads & rotors. "S" Trim includes; Aluminum shift knob, emergency brake handle and sills. Original Owner. All service records, \$54,000 obo. Call Scott 847-390-8666 or 847-696-1477 [MAM]

**1982 911SC. RACE READY** Perfect for Club Racing or Driver ED. events. Too many modifications and extras to list. Meets all PCA requirements for Club Racing. Never damaged, quick, strong, good looking- Class Champion Midwest Council 2001 and NSSCC Class Champion 2001 & 2002. \$26,500 Details and pictures-Mike at 847-842-0704 or mjc443@msn.com <mailto:mjc443@msn.com> Trailer (2yrs old) also available. [MAM]

**RACE CAR '88 930.** 700 hp. A proven winner. Too many firsts to list. Fresh motor & trans. 935 suspension with Penske's. Fabcar wing. Fully sorted - needs nothing! 2 Workers Choice awards. 2:18 at Road America. Building new car. \$89,500. (630) 291-6982 glenn@thesapas.com [MAM]

**1987 Black Carrera.** 58K miles. High performance 3.4i

engine, roll bar, Recaro racing seats, big brake kit, stress bar, 7" and 8" Fuchs wheels, front & rear factory spoiler, Hoosier tires. \$25,000. Contact Peter Fischer (847)304-8822 [AMJ]

**1986 911 Carrera** Red/blk leather. AC, CD, Sun Roof, factory tail and spoiler, 16" Fuchs w/new rubber and 17" Fiske FM-10 w/Bridgestone RE-730. Recent complete service. Concours condition, all original 63K miles \$25,000, Pat 815-728-1593 pmccryst@kidsroe.org. [AMJ]

**1982 Porsche 911SC--** Perfect for Club Racing or Driver Ed.events. Personal situation requires sale after only 2 Club Races. Car is fresh & never damaged. Too many modifications to list(i.e.. Weber 46 Carbs., Electro Motiv Crank-fired Ignition w/Twin plugs, GT Air Dam, SS Dual exhaust system, 915 Box, etc.) More mods. & upgrades to engine, brakes & suspension (invoices available). All racing accessories available including 2nd set of wheels w/new Bridgestone's. \$26,500 -- Custom aluminum trailer 2yrs.old sold separate. Details and pictures- Mike 847-842-0704 mjc443@msn.com [AMJ]

#### Boxster

**1999 Boxster** Triple Black, only 14K Miles (half of most '99s), 17" wheels with Pirelli P-Zeros & Painted Center Caps, 5 Speed, Sport Package w/Traction Control, in dash CD, Maintained by Napleton Porsche w/Receipts, No Rain, Snow or Smoking, Always Garaged, Show Room Sharp! Asking \$31,995 days 630-393-9180, eve & weekends 630-750-4511 or TomThompson5@aol.com [AMJ]

#### 924/928/944/968

**1988 944 Turbo.** Guards red w/black leather. Tourist delivery car w/sunroof delete and no rear wiper or body side moldings. One owner until 2001. Has LSD, usual power options, factory alarm, Alpine am/fm/cass w/CD changer. New in last 4k miles: belts, hoses, rollers, tensioner, water pump, cap/rotor/plugs/filters, and tires. Interior excellent and exterior is very good (usual rock chips). 123K miles. \$9,800.00 obo. Chris (630) 845-2623 or crussell951@aol.com. [MAM]

**1987 944 Turbo** red/black, 60,000 miles, very good condition, Brembo brakes, Koni adjustable shocks, full roll cage, 2 Recaro seats with harnesses, Fiske wheels 8.5 x 9.5, HD springs, lowered, original seats, extra tires & wheels. \$15,000. Call Bob 847-680-0136 or rostroga@aol.com [AMJ]

**1986 944 Turbo** Red / Black, Custom paint design, 80K miles. Race ready, PCA class F, Koni adjustable shocks, HD sway bars, HD lowered front springs Borla aluminum muffler,no cat. Momo race seat, Safety Devises roll cage. Tires & rims for race & street. New rod bearings about 300 miles ago. Have all stock parts that were taken off. Asking \$13,500 Dan at (708) 361-3184 [AMJ]

**1983 944 GR/bl** 149k Compl susp for track Weltmeister w droplinks, 400lb Eibach, Koni height adj, Camber plates, caster, & urethane. Rear 30mm Koni. Lowered, balanced. Rollbar new rings, 10.5 pistons, head recon., rod bearings, new belts, rollers, Brake calipers rebuilt, new wheel, master and clutch cylinders. Spl clutch and flywheel. Momo s/w and rebt rack w/o power steering. Less than 1K, no tracktime. Cover, bra, BBS and stock. \$8,000 in parts. \$8,500 219-840-1990 [MAM]

#### 914

**1973 914/2.0** Red/Blk, Orig Calif./Colo. car. rust free. SS heat exchanger, rebuilt eng. by AJRS. Fuchs alloy, good paint, stereo, exc driver or best resto. candidate. \$6,000. Vanesa 303-881-6598 [AMJ]

**1970 Original 914-6,** Race prepped GT-4R, Only 2 hrs on 2.8L, 290HP, 46mmWebers, trick rods, ported heads, 901 side shifter, rebuilt trans. light weight Tilton racing flywheel & clutch, 935 style front suspension, Big Red brakes, cockpit adjustable bias, Motec M48 ECU for data aquisition & ignition adjustment. 2 sets HRE wheels w/Goodyear slicks, many spare parts \$28,000 Glen 847-428-8038 spiegelerg@aol.com [MAM]

#### Others/Parts

**2002 Mini Cooper** Red/White exterior Blk/tan interior. Loaded with most options available. Automatic only 7,000 miles \$21,000 obo Scott 847-390-8666 or 87-696-1477 [AMJ]

**1980 BMW R100T** beautiful bronco metallic example with Corbin saddle. 43,000 miles from new. Needs nothing, ride anywhere. E-mail photos available. \$3500.00 Days 847-548-1080 eve. 847-223-1221 trw@pwpinc.com [MAM]

**993 Racing Gear:** Eibach Racing Springs [lowers car 1-11/2 inch];\$250; Autoauthority chip:\$250; Camber Truss Bar:\$100; Stroth Harnesses-2 six point Sets [red]:\$250; Porsche mirror removal tool:\$10; camera mount [2]:\$50; neck collar and gloves:\$50; other stuff: bra and mirror bras:\$50; 993 car cover:\$50; wheels/tires -2 7X17 and 2 9X17 C2 Turbo wheels refinished by Wheel Enhancement [painted Porsche crest caps] with BridgestoneRE71 street tires with little wear:\$1100 OBO. jackschrivher@yahoo.com or 312-499-6785. [AMJ]

**Harness Mount** - Weltmeister fits all 911's. \$260 new. Profi III Schroth Harness five point belts, red in color. \$270 new. Both never used. Fair offers accepted. Shirey (630-654-8006) or PSS006@aol.com [AMJ]

**1995 Race trailer** 45' Haulmark Elite 5th wheel. 2 cars fit with room to spare. 2 floor mounted tool cabinets, extra lights & 2 spare tires. Good condition. Asking \$10,500. Dan at (708) 361-3184 Tim at (708) 389-8700 [AMJ]

**Harness Bar** for 944, Like new, Bolt-on \$60.00 (312) 943-2324 [AMJ]

**Parts:** 95mm Cosworth pistons - 10.5:1., 95mm stock pistons, Carrera balanced rods for 3.2, 95mm cylinders, 3.2 cams w/grind for mass flow, Auto Authority mass flow w/ Euro-brain box, Auto Authority mass flow chip, Andial twin-plug module. 3.2 Oil tank, 3.2 Bosch fuel pump, 3.2 distributor, Twin plug distributor, Spark plug wires for twin plug, Under fender thermostat, 3.2 starter. 8-31 ring & pinion, Complete set of gauges., George Mueller, Days 708-331-8707 or gmueller@greatline.net [AMJ]

**WHEELS** - 1997 Carrera oem style wheels, 17x7.5" f and 17x9" r. Will fit both 993 and 964. Like new, about 3k miles. \$500. Jim, 847-735-1292. [AMJ]

**PARTS: 914** Parts, Rollbar, fuel injection, doors, lids, interior,electrical, body, suspension, drive line, etc. More from cars parted. List athttp://members.aol.com/PorscheIVW, Ricardo,

# The Mart

continued from page 39

Phone 219/939-9946, email: Porsche1VW@aol.com [AMJ]

**Wheels/Tires:** original BMW cast alloy, style V spoke 54, size 7 X 16j, part # 36 11 1 096 552, like new condition with Michelin Artic Alpin (#1 rated snow tire by consumer reports), size 205/55R16, 8/32" tread depth remaining (10/32" tread depth new). Driven 2000 miles. Fits BMW 3 series (e46). Sold car. Asking \$800 or best offer. Henry (630)963-3420 [FMA]

**Tires:** (4) Dunlop Summer Sport with only 100 miles. F 205x55 - 16, R 245X45-16 \$ 200.00 call John 847-541-3616, 847-630-2037 [AMJ]

**Tires:** (2) 225-40-18 and (2) 265-35-18 Yokohama AVS Sports. 1.5k miles-still have the moulding "nubs"-perfect. \$400.00 takes all. Van Larson (h)630-377-4686 [MAM]

**Parts** - 95mm Cosworth pistons - 10.5:1, 95mm stock pistons, Carrera balanced rods for 3.2, 95mm cylinders, 3.2 cams w/grind for mass flow, Auto Authority mass flow w/ Euro-brain box, Auto Authority mass flow chip, Andial twin-plug module, 3.2 Oil tank, 3.2 Bosch fuel pump, 3.2 distributor, Spark plug wires, Under fender thermostat, 3.2 starter, 8-31 ring & pinion, Complete set of gauges. George Mueller, Days 708-331-8707, gmueller@greatline.net [MAM]

**914 Parts,** 5-6X14 Revolution wheels, 4 new 195/60R15Sumitomo tires, rollbar, fuel injection, doors, lids, interior, electrical, body, suspension, drive line, etc. Ricardo Phone 219/939-9946, email: Porsche1VW@aol.com [MAM]

**914 Parts,** 6X14 Revolution wheels with Hoosier autox tires, 4 new 196/60R15 Sumitomo tires, rollbar, fuel injection, doors, lids, interior ,electrical, body, suspension, drive line, etc.. 219/939-9946, Porsche1VW@aol.com [FMA]

**Parts** - Moving Must Sell "GT Racing" RSR look alike front bumper and spoiler for SC and Carrera body styles, has large mouth opening to mount oil cooler and vents for brake cooling. Oil cooler - B&B 6"x 3"x 24" front spoiler mount with all connections. Full set of BBS gold honeycomb 16" wheels - fits all SC, Carrera, 924 and 944's. Sparco one piece racing seat - black and in excellent condition. Will separate. Best Offer(s) Bill Van Meter 773-637-6560 Days istartem@aol.com [FMA]

**Tires** BRAND NEW Michelin Pilot SX taken off Dan Gallagher's brand new 2003 Boxster 205/55ZR16 and 225/50ZR16 Perfect for earlier 911 and 944. Best Offer 708-784-0784 [FMA]

**Wheels and Tires:** O-Z Racing Monte Carlo rimless wheels, beautiful, 8.5 x 18, 5-spoke, carbon fiber center caps, shod with Michelin Pilots 235/50 ZR 18s. Used on a M-B S500 for ~13 months, gobs of tread, perfect condition, \$2500. OEM Volvo 6-spoke alloy 15" wheels, beautiful, needs tires, \$400. OEM Volvo BBS-look Alloys, shod with Firestone Affinity Touring 196/60 R 15s, \$600. All OBO, call Dr. Stout. 847.550.0067. [FMA]

**Wheels & Tires** can be used 17" F 245-40 -17, R 315x35 -17 call John 847-541-3616, 847-630-2037 [AMJ]

**914 5X7 4 bolt wheels** to fit under stock fenders, 911 watershed air cleaners. Ricardo Phone 219/939-9946, email: Porsche1VW@aol.com [FMA]

**914 parts** 5X7 4 bolt wheels to fit under stock fenders, 6 cylinder 911 tachometer (1970-74). Ricardo Phone 219/939-9946, email:Porsche1VW@aol.com [MAM]

## Wanted

**Wanted 914** 5X7 4 bolt wheels to fit under stock fenders. Ricardo Phone 219/939-9946, email: Porsche1VW@aol.com [AMJ]

**PORSCHE/MULTI-EUROPEAN SERVICE TECHNICIAN.** Position available for hard working dealer/factory trained or talented independent Multi-European line technician.

240 West Gilman, Madison, WI 53703 608-256-5000 www.reedsendecke.com



We are in business to make a difference.

To create emotion. To move people with ideas. To communicate with impact, distinction, and style. We assist our clients through a critical process of research, analysis and practical innovation to create comprehensive national and global communication programs. Programs from print to electronic communications that demand attention, solve problems, and produce consistent, tangible results.

REED • SENDECKE, INC.

Marketing Communications

## PRECISION RESEARCH

Marketing Research is all about knowing the needs and wants of your customers. Looking into the future and adjusting your product, services or marketing to keep pace with the needs for your clientel.

Some services we provide to help gain the marketing intelligence you need.

- Customer Satisfaction Surveys (*what better way find out what customers think*)
- Focus Group Research (*a tool to help define marketing plans or new product ideas*)
- Mystery Shopper Research (*evaluate salesperson performace from the customer perspective.*)
- Product/Website Usability Research (*Is your product or service as easy to use as you think?*)

**For more information call us at 847-390-8666 or visit our website [www.preres.com](http://www.preres.com).**

10600 W. Higgins Rd. Suite 100 Rosemont, IL 60018

Excellent opportunity to be part of our expanding full service facility with excellent wage, health benefits, and paid vacation. Fax or mail resume to HR at: Kelly-Moss Motorsports 3017 Perry Street Madison, WI 53713, Fax: (608) 274-6252, Phone: (608) 274-5054 [AMJ]

## Misc.

**Closed Truck Going to Parade** - We have room for seven Porsches to go to the Parade by closed and insured car carrier. It will be leaving the Yanahan home on June 19 and leaving Florida to return on June 26. If we can fill the trailer with seven we can save each member a lot. I have used Inter City for over twelve years and they are very gentle with our toys. They are the official carrier for this year's Parade. Call Pat for more details. 630-887-7605 [MAM]

**Where in the world is Waldo Schleffer?** I am looking for Waldo or his wife Ann Vondracek, to discuss the 1953 Porsche America Roadster Waldo owned from 1963-1981. Please call Jim Perrin 614-882-9046 or email are carrerags@aol.com [MAM] ■

# **WE GO THE DISTANCE FOR SUPERIOR SERVICE**

**VEHICLE MAINTENANCE & PERFORMANCE  
AUDI BMW MERCEDES PORSCHE VW**

# **KELLY MOSS MOTOR SPORTS**

★ ★ ★ ★ ★



**STREET CAR  
MAINTENANCE**

**RACE CAR  
PREPARATION**

**TRANSPORTATION  
SERVICES**

**MODIFICATION &  
BUILDING**

**PAINT &  
COLLISION REPAIR**

**VINYL GRAPHICS**

**CHECK OUT OUR WEBSITE AT:**

[www.kellymoss.com](http://www.kellymoss.com)

**3017 PERRY STREET  
MADISON, WI  
53713  
608.274.5054**



**BOXSTERS • 911s • CARRERAS • TURBOS • TARGAS**



Great Selection of New and Pre-driven Porsches

Courteous, Knowledgeable Sales Professionals

Factory Trained and Certified Service Technicians

Extensive Porsche Parts Inventory

**Contact Marty Johnson, General Manager  
Over 20 years Porsche Experience  
(773)777-2000**



**Lynch**  
*Porsche*

5201 W. Irving Park Rd. Chicago, IL 60641

[www.golynch.com](http://www.golynch.com)

Storeroom Hours Mon - Thurs 9AM - 8PM,

Fri - Sat 9AM - 6PM

Visit Us on the Web at: **[www.LynchPorsche.com](http://www.LynchPorsche.com)**

# PORSCHE TRIVIA

# QUIZ 2003

By **Mary Anne Nowakowski**

- What was the gift presented to Ferry Porsche by his employees on his 60th birthday?
  - A stainless steel Swish wristwatch engraved on the back with the Porsche crest
  - A 914/8, with a 260-hp 8-cylinder engine from the 908.
  - A ceramic 911 hood, initialed by each of the 1400 Porsche employees.
  - No gift was received.
- Which statement is true about the changes made to the 1959 model year Porsche 356?
  - The ashtray was removed from the face of the dashboard to under the center of the dash.
  - Zenith dual-throat carburetors were added on the 1600 and 1600S engines, replacing Solexes.
  - The Convertible D was introduced.
  - The T-5 Technical Program was implemented.
- When adjusting the headlights of a 993, what weight, if any, should be in the driver's seat?
  - One person or weight equal to 165 lbs.
  - The driver's seat should be empty and moved completely forward on the seat rails.
  - Approximately 25 lbs should be in the drivers' seat.
  - The two front seats should have the same amount of weight to maintain lateral balance during adjustment.
- Where is the engine compartment lid release handle on a 911?
  - In the driver's side lock post.
  - Adjacent to the heater control lever.
  - In the center of the dash, just below the radio.
  - Inside the right rear wheel well.
- What is the recommended maximum speed of a Boxster, when using its spare wheel and tire?
  - 70 mph
  - 60 mph
  - 55 mph
  - 50 mph
- What is the recommended pressure in the spare tire of the Boxster?
  - 30 psi, front or rear
  - 45 psi, front or rear
  - 60 psi, front or rear
  - 70 psi, front or rear
- How many Constant Velocity (CV) joints do the rear axle of a 911 have?
  - The 911 is not equipped with CV joints.
  - One
  - Two
  - Four
- What was not a distinguishing characteristic of the 924 Turbo when it was introduced?
  - New pistons, cylinder head and combustion chamber design
  - A 3-spoke leather steering wheel
  - A 5-speed manual transmission
  - Air intakes below the hood
- Which of the following items was not removed from the 911 Carrera RS for weight reduction?
  - Door windows
  - Doorsill trim
  - Glove box lid
  - Coat hooks
- What do the initials "PEP" signify regarding Porsche design efforts?
  - It signifies collaboration with the Pep Boys chain of car parts.
  - It is a German acronym that stands for the Weissch manufacturing plant.
  - Porsche Experimental Prototype, used to test design concepts built in modular form.
  - It was an acronym that Ferry Porsche affectionately used to describe the original Gmund, Austria plant.

ANSWERS:

1) B	2) C	3) A	4) A	5) D	6) C	7) D	8) C	9) A	10) C
------	------	------	------	------	------	------	------	------	-------

# 2003 Board of Directors



President  
**Keith Clark**  
 630-690-3381 h  
 630-690-3394 f  
 ClarkFNFlying@aol.com



Vice President  
**Jim Jacisin**  
 630-279-4835 h  
 630-665-3491 f  
 james@design-dept.com



Secretary  
**Mary Anne Nowakowski**  
 847-929-1831 w  
 847-470-1204 f  
 nowakowskim@permapipe.com



Treasurer  
**Jack Stephensen**  
 708-865-1465 v  
 847-541-6171 f  
 jstephensen@aol.com



Past President  
**Ed Barnicle**  
 630-323-2963 w  
 630-323-5334 f  
 ebarnicle@dolphincartage.com



Director  
**Pete Hackenson**  
 630-655-1629 h  
 630-655-4841 f  
 P.Hackenson@attbi.com



Director  
**Chris Inglot**  
 847-559-1126  
 773-286-4811 f  
 Cinglot@aol.com



Director  
**Ken Pesavento**  
 630-469-1546 v  
 kenneth\_a\_pesavento  
 @ml.com



Director  
**Shawn Young**  
 630-205-0055 c  
 630-758-1108 f  
 2DPD@attbi.com



Director  
**Chuck Bittman**  
 708-352-9505 h  
 708-354-9505 f  
 cbittman@bellebotanicals.com

## 2003 Coordinators

Advertising:	Susan Shire, 847-272-7764, 272-7764 fax, <a href="mailto:ChiScene@aol.com">ChiScene@aol.com</a> & Pat Yanahan
Autocross:	Mike Gallagher, 773-929-8109 v/f, 312-919-8109 c, <a href="mailto:foggy@21stcentury.net">foggy@21stcentury.net</a> & Shawn Young
Autocross:	Shawn Young, 630-205-0055, 630-600-0054 fax, <a href="mailto:2DPD@attbi.com">2DPD@attbi.com</a>
Archive Historian:	John O'Keefe, 708-531-9116
Charity:	Doug Coup, 847-429-0794, 847-429-0912 fax, <a href="mailto:douglascoup@msn.com">douglascoup@msn.com</a>
Chicago Scene:	Scott Adleman, 847-390-8666, 847-390-8885 fax, <a href="mailto:saa@preres.com">saa@preres.com</a>
Chief Driving Instructor:	John Ruther, 847-304-5515, 847-304-5615 fax, <a href="mailto:john@northstarmotorsports.com">john@northstarmotorsports.com</a>
Concours:	Jim Jacisin, 630-279-4835 h, 630-665-3491 fax, <a href="mailto:james@design-dept.com">james@design-dept.com</a> & Pat Yanahan
DE – Blackhawk:	Dan Gallagher, 708-784-0784, 708-784-0785 fax, <a href="mailto:Bbabies@aol.com">Bbabies@aol.com</a> & Pete Hackenson, 630-655-1629, <a href="mailto:P.Hackenson@attbi.com">P.Hackenson@attbi.com</a>
DE – Gingerman:	Jeff Girard, 630-985-6739, 630-985-6739 fax
DE – Road America:	Pete Hackenson, 630-655-1629, hotline 847-604-4795, 630-655-4841 fax, <a href="mailto:P.Hackenson@attbi.com">P.Hackenson@attbi.com</a> & Keith Clark
DE – Tech:	Toby Duckett, 630-248-7680, <a href="mailto:toby@mc2fyi.com">toby@mc2fyi.com</a>
Database:	Debby Leed, 847-382-6911, 847-382-3562 fax, <a href="mailto:leedlast@hotmail.com">leedlast@hotmail.com</a>
Goodie Store:	Karen Hackenson, 630-655-1629, 630-655-4841 fax, <a href="mailto:P.Hackenson@attbi.com">P.Hackenson@attbi.com</a>
Insurance:	Keith Clark, 630-690-3381, 630-690-3394 fax, <a href="mailto:ClarkFNFlying@aol.com">ClarkFNFlying@aol.com</a>
Membership:	Van Miller, 847-949-0972, <a href="mailto:Quik550@aol.com">Quik550@aol.com</a>
Novice Driving Instructor:	Ed Leed, 847-382-6911, 847-382-3562 fax, <a href="mailto:leedlast@hotmail.com">leedlast@hotmail.com</a>
Photographer:	Paul Silver, 847-634-6587 h, 847-523-6838 w, <a href="mailto:paul.silver@motorola.com">paul.silver@motorola.com</a>
Property:	Ed Leed, 847-382-6911, 847-382-3562 fax, <a href="mailto:leedlast@hotmail.com">leedlast@hotmail.com</a>
Publicity:	Susan Shire, 847-674-2285, 847-679-8973 fax, <a href="mailto:chiscene@aol.com">chiscene@aol.com</a>
Race Tech:	Todd Conforti, 847-952-0070, 847-952-1261 fax, <a href="mailto:TLControls@aol.com">TLControls@aol.com</a>
Rallye:	Tom & Phyllis Harwood, 847-742-6804, 847-508-3726 cell, <a href="mailto:trh911sc@aol.com">trh911sc@aol.com</a>
Rallye:	Ken Pesavento, 630-469-1546 v, <a href="mailto:kenneth_a_pesavento@ml.com">kenneth_a_pesavento@ml.com</a>
Safety:	Todd Conforti, 847-382-9653, 847-952.1261 fax, <a href="mailto:TICcontrols@aol.com">TICcontrols@aol.com</a>
Social:	Nikki Pesavento, 630-469-1546, <a href="mailto:npesavento@rwbaird.com">npesavento@rwbaird.com</a>
TRAC 2003 Race:	Pete Hackenson, 630-655-1629, hotline 847-604-4795, 630-655-4841 fax, <a href="mailto:P.Hackenson@attbi.com">P.Hackenson@attbi.com</a> & Keith Clark
Webmaster:	Greg Gulik, 312-642-5377, <a href="mailto:webmaster@pca-chicago.org">webmaster@pca-chicago.org</a>

Why Would You Ever Consider A Luxurious PreOwned Vehicle From  
***Napleton Porsche in Westmont?***

***The Answer Is Quite Simple...***



***It's All About  
Selection.***

***The Midwest's Largest Exclusive Porsche Dealer  
Finest Selection Of New And Preowned Porsches In The Midwest!***



***NAPLETON***  
**PORSCHE**

**201 E. Ogden Ave. • Westmont, IL • 630-725-0911 • [www.ednapleton-porsche.com](http://www.ednapleton-porsche.com)**



*HOT, FRESH AND... FAST*



2204 N Lincoln Ave.  
Chicago, IL.  
(773) 472-7400

36 S La Grange Rd.  
La Grange, IL  
(708) 352-8882

15256 S. La Grange Rd  
Orland Park, IL  
(708) 403-3535

118 S Clinton St.  
Chicago, IL  
(312) 876-1188

1504 N Naper Blvd.  
Naperville, IL  
(630) 505-0600

75 E Wacker Dr.  
Chicago, IL.  
(312) 263-0070

# CHICAGO SCENE

959 Lee Street  
DesPlaines IL 60016-6545