

Chicago Scene

THE OFFICIAL PUBLICATION OF
THE PORSCHE CLUB OF AMERICA, CHICAGO REGION



July 2002

Blackhawk Novice Tells All • Midship Report • Drivers Ed Preparation Check List • Rallye Recap

***When you race,
there's only one name to remember...***



Northstar
Motorsports

Safety Equipment & Accessories

For the finest in Auto Racing Safety Equipment and Accessories including Helmets, Driving Suits, Shoes, Gloves, Seats, Harnesses, Brake Pads and much more, come to our showroom in Barrington, IL or visit us online.

www.northstarmotorsports.com | 800.356.2080

28144 W. Industrial Avenue, Suite 108, Barrington, IL 60010



Chicago Scene

The Official Publication of the Porsche Club of America – Chicago Region



The Chicago Scene (ISSN 10564195) (USPS 0006-381) is the monthly publication of the Porsche Club of America (PCA) – Chicago Region, printed at PressTech, 959 Lee Street DesPlaines, IL 60016-6545. Periodical Rate Postage Paid at Des Plaines, IL USPS. Subscription is provided to members of the PCA – Chicago Region. PCA dues are \$42.00 annually, of which \$12.00 is for the subscription. Subscription rates for non-Chicago Region members is \$24.00 per year. Permission to reprint any material published herein is granted, provided full credit is given to Chicago Scene and the author. PCA – Chicago Region is not responsible for any services or products advertised herein. Statements appearing in the Chicago Scene are those of the author and do not constitute an opinion of the PCA – Chicago or its Board of Directors.

Send address changes to:

POSTMASTER:

Deborah Leed
37 Lakeview Drive
Barrington, IL 60010-1949
E-mail: Leedlast@hotmail.com

SUBMISSION INFORMATION

Articles are preferred in MSWord but they can be contained in the body of an e-mail. Do not send articles in pdf.

Digital photos: All digital photos should be taken at the maximum resolution the camera allows. At a minimum, pictures should be 300 dpi for use in the newsletter. File format can be either tiff or jpeg.

The Mart: To avoid errors, ads should be type written on a computer and sent to the editor in electronic format.

Commercial Advertising: Contact Susan Shire at 847-674-2285 for pricing information. Contact the editor for submission detail. Design services are offered by the editor at a fee.

Inside This Issue

Features

Autocross II Results	21
Blackhawk Novice Tells All	8
From Here to There Rallye Recap .26	
The Midship Report	13
Naught Two Tour	17
Preparing for a DE Event	23
Pictures from Driving School	32
Stage Coach Boxster Tour	14

Upcoming Event Announcements

Autocross III –Back In The Saddle .11	
Autocross IV – at Lake Geneva	29
Blackhawk Drivers' Ed - July 10.	7
Blackhawk Drivers' Ed - Aug 14.	19
Brookfield Zoo Tour/Irish Times	18
Concours II – Potter's Picnic	5
Concours III – Cuneo Estate	35
Concours IV – at TRAC	35
Gingerman 2002	15
New Member Meet & Greet	35
Parade Rallye Weekend.	39
PCA Golf Outing	20
Rallye III - Drive Around the	33
TRAC 2002	40

In Every Issue

Advertisers Index	1
Address Change Form	45
Behind the Scene	3
Directors & Coordinators	56
Board Meeting Minutes–May '02	47
Calendar of Events	2
Clark's Corner	3
New Members Welcome	44
The Mart.	51
Spare Parts.	37
Tech Sheet.	46
Tech Quiz.	55

SUBMISSIONS TO THE EDITORS:

Scott & Maria Adleman
Precision Research, Inc.
10600 W. Higgins Rd Suite 100
Rosemont IL, 60018
E-mail: saa@preres.com

Advertisers Index

914 Limited	37
Associated Mortgage	22
Autobahn	34
R.A.Adams Enterprises	37
Bacino's	BC
Body Werks of Barrington	14
DC Construction	22
Emmons Coach Works	10
The Exchange	54
Fast Lane	50
Fischer Motors	45
Kelly-Moss Motorsports	10/16
Lynch Porsche	4/53
MacNeil Automotive Products	24
Midwest Eurosports	38
Midwest Performance Cars	28
Moran-Schaefer Clinic	22
Moto Persona	50
Napleton Porsche	IBC
Northstar Motorsports	IFC
Oxford Capital	6
Perfect Power	12
PressTech	15
Responsive Financial Services	12
Joe Rizza Porsche	30/31
Strasse Parts & Accessories	22



Todd Conforti's 1993 911 RS America.
This is a light weight version of the 911 C2.
Only 750 of these were produced.

DAS FUTURE 2002

EVENT CALENDAR

- 7/7 Concours II at Potter's Picnic
- 7/10 Blackhawk Drivers' ED
- 7/12 Board Meeting
- 7/14 Autocross III at Hawthorne Racecourse
- 7/20-21 GingerMan Raceway Drivers' ED
- 728-8/4 Porsche Parade in Idaho
- 8/4 Social Event
- 8/9 Board Meeting
- 8/11 Autocross IV at Maywood
- 8/14 Blackhawk Drivers' ED
- 8/17 Golf Outing
- 8/18 Concours III at Cuneo Estate in Vernon Hills
- 8/25 Rallye III
- 8/30-9/2 Road America Labor Day Drivers' ED, Club Race, Concours IV, Weekend Party
- 9/4 New Member Meet & Greet
- 9/6 Board Meeting
- 9/14-15 Rallye IV and Touring with Milwaukee Region
- 9/18 Blackhawk Drivers' ED
- 9/21 Swap Meet
- 9/22 Autocross V at Hawthorne Racecourse
- 9/29 Concours V at Graue Mill in Hinsdale
- 10/4 Blackhawk Drivers' ED (Tentative)
- 10/5-6 Blackhawk Octoberfest Drivers' ED
- 10/11 Board Meeting
- 10/13 Gimmick Rallye
- 10/20 Fun Autocross (Tentative)
- 10/27 Rallye V
- 11/1 Board Meeting
- 11/3 Fall Tech Session
- 11/9 Concours Judges School
- 11/13 New Member Meet & Greet
- 11/16 Social Event
- 12/14 Holiday Dinner Dance and Awards

That's All She Wrote to 2002

Current Calendar of Events

J U L Y - 2 0 0 2						
monday	tuesday	wednesday	thursday	friday	saturday	sunday
1	2	3	4	5	6	7 Concours II Potter's Picnic
8	9	10 Blackhawk Drivers' Ed	11	12 Board Meeting 8:00 p.m. Park Ridge	13	14 Autocross III Hawthorne Park
15	16	17	18	19	20 Gingerman Raceway Drivers' Ed	21 Gingerman Raceway Drivers' Ed
22	23	24 Milwaukee Region Blackhawk DE	25	26	27 PCA/BMW DE @ Gateway Int'l	28 Parade
29	30	31	Porsche Parade - Idaho --> ends 8/4			

A U G U S T - 2 0 0 2						
monday	tuesday	wednesday	thursday	friday	saturday	sunday
			1	2 Board Meeting 8:00 p.m. Park Ridge	3	4 Brookfield Zoo Tour/Irish Times Social
5	6	7	8	9	10	11 Autocross IV Maywood Park
12	13	14 Blackhawk Drivers' Ed	15	16	17 Golf Outing	18 Concours At Cuneo
19	20	21	22	23	24	25 Rallye III
26	27	28	29	30 Road America Labor Day Drivers' Ed, Club Race, Concours V, Weekend Party -> 9/2	31	9/1

CLARK'S CORNER

by Keith Clark, PRESIDENT, PCA-CHICAGO

Wow, the events are coming and going so quick I can't keep up with them. Road America was terrific as always. Chris Ingot, Steve Rashbaum and Susan Shire did a great job keeping Chicago Region ahead of the pack. The up coming Drivers' Ed and race weekend in September drew some twenty-five inquiries the first afternoon it hit the web. The Autocross at MGA was a fun day even if the weather was on the wet side. Thanks to Joe Holler and company for putting together a fine event. I'm keeping tabs on the Rallyes this year and it looks like everyone is enjoying them. Seeing that I truly cannot Rallye (just ask anyone), I have to ask how the events went.

Everyone tells me they are having fun. Mike and Anita Haas ran Rallye one, and Chuck Bittman and Lee Lichtenstein hosted the second. Thanks to two great rallye teams and chairman. The Lynfred Winery Concours was fantastic, the weather was perfect, the grounds at the winery were perfect, the wine tasting was perfect and I left my car at home and didn't have to clean it. PERFECT. Our thanks to Van Larson and his family for a great day under the hot sunshine.

I'm hoping people submit articles on the events in more detail for the Scene, since I do not have the room to go into great detail here in my area and I'm not very good with writing articles as you can see.

Things are moving forward in the club. Again this month, there is plenty to do. Potter's Picnic is a tradition you can't miss. It's a great time with some great people. Autocross III at Hawthorne will be a fast event on a challenging course. For you track junkies, we will be at Blackhawk Farms on the 12th. The June scene did not have the application in it, but be assured the event is taking place as it is on the calendar. We are also returning to Gingerman Racway this month. If you are new to race tracks, this is the place to learn. You will not be disappointed. The surrounding area offers great shopping and dining. ■



BEHIND THE SCENE

by SCOTT & MARIA ADLEMAN, EDITORS

I am pleased to announce that member contributions to Chicago Scene have increased dramatically. Keep those photo and articles coming. We are now getting to the point where we have choices for the cover page. Please don't get discouraged if your cover shot is not on this or the next issue. It may take a few months to get to it. (Hey, don't get the idea that I have dozens. I just have two or three so I still need yours.)

We still could use more writers. I would like to see a short recap from each event. A half page on your experience would do nicely to tie together photographs and a results page. Just tell us what you liked and why you would recommend this type of event to a friend or club member. For example, in this issue we are running some great pictures from the first driving (Drivers' School) event, but there was no story to accompany it.

Now that the dust had settled regarding the interior of the magazine (paper and printing process), I have started tweaking the cover based on some comments from Eric Pernod. Eric is a member with some pre-press/graphics expertise. Starting in this issue the cover logo has been modified. We have added a drop shadow to the type to help the text stand out from the photograph underneath it.

We have several good articles in this issue. One is by Russ Pesko on how to prepare for a Drivers' Ed event, accompanied with a check list by Ed Leed so you don't forget important items. John Miller continues with his experience on modifying his Boxster, and goes one better with a short article on an out of region tour he participated in. Our other regular, John Mueller, writes his Naught Two Tour article and compares his experience with the new Michelin Pilot Sports Cup tires against the Kumhos.

Events galore! In this issue we have 3 concours events, 4 DE events, 2 rallyes, 2 socials and 2 autocross events. There certainly is something for everyone. So get those entry form submitted! ■



GET IT FIXED RIGHT!



When you need service for your Porsche, we want you to think of Lynch first. The Lynch Service Pros will treat your vehicle like it was their own. More importantly, when you service your vehicle at Lynch, you are guaranteed that the Lynch Service Professionals will do everything possible to make sure that you are always satisfied. Our award winning service department has the very best trained technicians to see to it that your car is fixed right the first time. With our trademark courteous service and our low prices, we'll always leave you smiling.

Just give our Service Department a call at **(773)794-7979** and schedule an appointment. Your satisfaction is guaranteed by the Lynch Porsche Service Pros for many years to come. We look forward to serving you soon.

Lynch Porsche is under new management.

**Contact Marty Johnson
(773)777-2000**



Lynch

Porsche

5201 W. Irving Park Rd. Chicago, IL 60641
www.golynch.com
Storeroom Hours Mon - Thurs 9AM - 8PM,
Fri - Sat 9AM - 6PM

Visit Us on the Web at: **www.LynchPorsche.com**

Potter's Picnic

CONCOURS **TWO** @ Peter Fischer's Estate

The Summer tradition continues! **Concours Two Sunday July 7.** For 34 years families and friends, along with their fabulous Porsches, gathered at the Potter's lovely farm for this summer classic. And while the farm is now sadly gone, the tradition continues on. Peter & Janice Fischer will again be hosting the classic summer picnic. And Rip and Linda Patterson will continue to host the best childrens' games. Come out, park your Porsche, yourself and the kids on the big grassy lawn. Watch the games, eat the delicious brats, toss the water balloons and work on your tan. Join us once again as the summer tradition continues. It is, after all these years, what summer is all about.

- 11:00 am:** Cars can arrive for final prep
- 12:30 pm:** First brat off the grill
- 1:00 pm:** Judging begins
- Class A:** Exterior, Interior, Trunk, Engine & Undercarriage
- Class B:** Exterior, Interior, Trunk & Engine
- Class C:** Exterior, Interior & Trunk
- Class D:** Exterior & Interior
- Class E:** Exhibition Style of Exterior & Interior.
- Novice:** For fun & first time participants only. Judged to Class C standards.



Picnic & Concours Questions?
Call Van Miller @ 847.949.0972

Peter Fischer Estate: 24075 Chardon Road, Grayslake IL

Potter's Picnic Registration

Yes! I want to toss water balloons, eat brats and work on my tan @ Fischers Estate. Please send your entry to: Van Miller, 545 Killarney Pass Circle, Mundelein IL 60060

Name _____

_____	Number of Adults	@ \$8.00 each	_____
_____	Number of Children	@ \$4.00 each	_____
_____	Number of Mini Kids	FREE	_____
_____	Total Picnicers	Total Enclosed	_____

Please make checks payable to: **PCA Chicago Region**

Name _____
Address _____
City _____ **State** _____ **Zip** _____
Phone () _____ **Region** _____

The Concours at Potter's Picnic is FREE to all Club Members
 If you are also showing your car in the CONCOURS use this registration form.

PORSCHE Model _____ **Body Style** _____ **Year** _____
Class **A** _____ **B** _____ **C** _____ **D** _____ **E** _____ **Novice** _____



Your Financial Bridge to the Future.



Determination. And your ability to capitalize on market opportunities have paved the road to your business success.

Success doesn't stop here. Success is getting to the next level. Growth. Expansion. Increased profits. Sometimes businesses need help crossing that bridge.

Oxford Capital specializes in providing working capital and payroll funding programs to start-up and rapid growth companies. Oxford's programs are competitive, creative and flexible:

NO PERSONAL GUARANTEES

-

NO TERM CONTRACTS

-

NO MINIMUMS

(You control your funding requirements)

-

HIGH ADVANCES

-

LOW FEES VS. FLAT FEES

Oxford Capital

Your financial bridge to the future.

For more information about our funding programs, please call:

Peter Aransky or Michael Gallagher
at 800.433.6539 or 312.943.3900,
or e-mail to Peter.Aransky@OXCAP.com

Oxford Capital
676 N. Michigan Avenue, Suite 3050, Chicago, IL 60611

OXFORD
CAPITAL



Blackhawk Farms Raceway - Drivers' Education

Wednesday, July 10th

Blackhawk is a great road course and this July 10th event is sure to please. Blackhawk is an eight turn 1.9 mile enclosed, high-speed racetrack located in South Beloit, on the Wisconsin border, only 90 minutes from Chicago.

Most Blackhawk events are sell-outs, so pre-register as early as possible to assure a spot. Waiting lists will be used to fill any open spots. Cancellations & refunds will be honored until the prior Monday at 9 p.m. for the Wednesday event.

Mandatory clothing for all drivers at this event includes: a Snell SA 1995 or 2000 Helmet, long sleeve cotton shirt, long pants, socks, all made of non-synthetic materials, and closed toe shoes. Recommended but not mandatory are: driver's suit, driving gloves, driver shoes and a protective neck brace all made of Nomex or similar fire-resistant material, as well as a mounted fire extinguisher. Please check the date on your helmet now, as it will be inspected during the Tech Inspection at the track. If you and your car do not pass Tech Inspection, you will not be able to drive. You will be required to show a valid drivers license (no tickets accepted) along with a valid PCA Membership at registration.

You can save time at the track by bringing your car to a recognized Porsche Dealer or Porsche Specialty Shop for mechanical inspection and having them complete, sign and stamp the Chicago Region Tech Inspection Sheet. Review the NEW Updated Year 2002 Tech and Safety Requirements - there are changes from the prior year! Pay particular attention to specifics concerning brake pads and fluid, since Blackhawk is very hard on the brake system!

Blackhawk Concession Stand serves breakfast from 9 a.m. until 10 a.m., lunch from 10 a.m. until 1 p.m. The Accessories Store sells gas (leaded & unleaded Race only), air, and showers all day.

General Schedule:

- 8:00 a.m. - Registration & Tech Open
- 9:30 a.m. - Mandatory Drivers' Meeting
- 4:30 p.m. - Last Car off Track

Questions: Pete Hackenson (630) 655-4661, 1629 (Home)
phackenson@hotmail.com

Directions:

North on Northwest Tollway (I-90) to IL 75 just before WI State line. West on IL 75 to "T" (Blackhawk Road). Right to Shirland (2 blocks, across tracks). Left on Shirland (1 mile) to Fischer. Left on Fischer to "T" (Prairie). Left at "T" to Blackhawk Farms Raceway entrance on right. Gas stations - Mobil & Clark on Shirland.

First Driver

Year/Car Make/ Model/ Permanent Car Number

Phone

E-mail

Member Applicant Guest of: _____

Class: (circle applicable) [Instr] [A] [B1] [B2] [C] [Novice]

Prior Experience: _____

Second Driver

Year/Car Make/ Model/ Permanent Car Number

Phone

E-mail

Member Applicant Guest of: _____

Class: (circle applicable) [Instr] [A] [B1] [B2] [C] [Novice]

Prior Experience: _____

Pre-registered Entrance Fees:

First Driver - \$150.00	_____
Second Driver - \$150.00	_____
Second Driver - \$75.00*	_____
Total	_____

* The \$75.00 fee only applies to family members who drive the same car as the first driver.

Make check to PCA- Chicago Region and Mail to:
Pete Hackenson
3613 Fairview Ave. Oak Brook, IL 60523-2687

For more information on Track Events, Schedules, Tech & Safety Requirements Information use the WEB at WWW.PCA-Chicago.org.
For more Blackhawk information go to WWW.namotorsports.com/Tracks/Blackhawk.html.

Blackhawk Novice Tells All

By JOE MARTÍNEZ

EVENT DATE: May 15, 2002

I'm new to the PCA Chicago Region and I've had my Porsche for a whole nine months now (unfortunately, three of those were spent in hibernation). After getting my first speeding ticket 6 days into ownership, I decided I needed to find a better way to push my car to its limits. The good news was that PCA hosted such events; the bad news was that they were still months away.



So after attending a different type of driving school and waiting out the cold, spring finally arrived and it was time to pull my beloved Porsche out of the garage. The March issue of "Chicago Scene" arrived and there it was: 5/15 Blackhawk Farms Raceway Novice Instruction. Quickly, I dispatched my application and secured my spot.

The Car: 1991 C4, Eibach springs,

TRG RS sway bars, TRG strut brace, 17" alloys and Pirelli P-Zeros (no excuses!).

Homework: Read Henry Watt's *Secrets of Solo Racing* at least three times and attended PCA Chicago's 4/28 Autocross School (another great event).

Prep: Visited Sol Snyderman at Perfect Power for an alignment, corner balance and brake fluid.

I was ready.

Now, I'm not familiar with many car clubs, but Chicago has a first-rate PCA organization with a lot of super people. The event was run by volunteers and there were about 40 drivers and 60+ club members working as instructors or track supervisors. The day included the usual check-in and tech inspection, a few inspirational words from the Event Chairman, Dan Gallagher, and then you either attended class or hit the track.

I was paired up with Ray Quick, a PCA member from Baton Rouge, who was visiting his two daughters in the area, one of whom was at the track driving. Ray inspected my vehicle and had me correct a couple matters I overlooked during my self inspection, i.e. emptying the glove box and pulling floor mats down to the metal. Next, we

installed intercom pieces into our helmets which allowed us to communicate all day without shouting. Ray then took the wheel and pointed us to the track. He wanted to show me the proper line and test the handling capabilities of my car.

For those who've never been to Blackhawk, it's a 1.9-mile U-shaped track. You start at the bottom of the U and then work your way up and then come down and do a smaller U inside the outer track, then back up and around. In two miles, you do seven turns with a lot of chinks and bends along the way. Top speeds approach 100 mph and you never have a moment's rest.

After a few laps, it was time for yours truly to give it a try. Ray and I swapped seats and I spent the next 30 minutes finding out just how little I knew about driving a race car. I made all the classic mistakes: late braking, early braking, early apex, not using the whole track, etc. Smooth, I was not. Also, I had to learn hand signals and how to pass and get passed, exit and enter. Oh yeah, and I needed to do all this while pushing my car through corners faster than it's ever been. It's humbling, nerve-wracking and extremely challenging.

Continued on next page





Drivers' Ed is the perfect answer for those who want to explore the limits of their Porsches. It's an intense, challenging and thrilling experience and you will learn a great deal about your car and yourself. My day at the track was made even more enjoyable due to the excellent guidance provided by my instructor, Ray Quick. I can still hear him shouting "Brake, brake, brake!" or "I like what you're doing." It's something that brings a smile to my face every time I think about it.



great, but I had no idea how great the experience of ownership would be. Thank you Chicago Region and I'll see you at the track. ■

After leaving the track, I was off to Ed Leed's driving class. This was my second screening, but it was just as entertaining and informative as the first time. Next, I was off to work one of the corners where we waved various flags or worked the radio. Thirty minutes later, I grabbed a bite and then it was back to my car.

Getting my first Porsche has been

I had another 45-minute session in the afternoon and started to get the hang of things. I began looking through the corners and setting up for the next turn or series of turns. I improved my braking and started nailing my apexes and I even managed to pass a few folks along the way. The highlight was running down a 2002 911 whose driver was still working on his lines. I could see exactly where he would lose time by taking a turn too wide or turning in too late. And just when I started to feel like I owned the track, my mind drifted for a second and, sure enough, I missed an apex and realized it was time to call it a day.



Photo from Pat Yanaban's hide out.

**KELLY-MOSS
MOTORSPORTS**
★★★★★★★★

CONGRATULATES

BOB MAHONEY
**6 CONSECUTIVE
NATIONAL
PCA WINS!**

CAROLINA
SAVANAH
ROAD ATLANTA
NEW ORLEANS SPRINT
NEW ORLEANS ENDURO
LAS VEGAS



**KELLY-MOSS
MOTORSPORTS**
★★★★★★★★

KMMGRAPHIX
KELLY-MOSS MOTORSPORTS

KMR-MOTON
SUSPENSIONWERKS

KMA 15TH
ANNIVERSARY
1988-2003

3017 PERRY STREET MADISON, WI 53713 608.274.5054 PHONE 608.274.6252 FAX

EMMONS

COACHWORKS
LIMITED
Fine Motoring Accessories[®]

- Premium Car Care Products
Zymöl[®] Factory Detailing[™] Centre
Gifts (and Gift Certificates)
Apparel
- Caps
 - Shirts
 - Jackets
 - Custom Embroidery
- Accessories
- Car Covers
 - Floor Mats



10% Discount
to PCA Members

303 PROTECTANT **Clay Magic** **P21S**

10 to 5 Mon. - Fri. / 10 to 4 Sat

100 E. ROOSEVELT ROAD • VILLA PARK, IL 60181 • 630-832-1411

www.emmonscoachworks.com

AUTOCROSS THREE

BACK IN THE SADDLE

*Sunday, July 14 –Hawthorne Race Course
Presented by Nick & Peggy Peterson*

Come out for the 3rd autocross event of the year. This course should be our fastest course to date. Please pack a lunch and something to drink. Pre-Register by mail to create a speedier event. Include your permanent car number.

Directions: 290 west to Laramie. Exit Laramie. Go left or south on Laramie. Proceed 3 miles to 35th street. Enter GATE 4.

Time: 9:00-10 a.m. Registration and Technical Inspection opens
10:15 a.m. Tech is closed
10:15 a.m. Drivers meeting
10:30 a.m. First car off. Let the fun begin.
3:30 p.m. Trophy presentation

First driver: \$30.00 member \$35.00 non-member guest - member must be present
Second driver: \$15.00 family member \$35.00 non-member guest - member must be present
\$30.00 member sharing car with other member

Please register by mail. E-mail is okay with check mailed separately. (Checks payable to PCA-Chicago Region.) Please pay by check.

To: Michael Gallagher 2418 N. Seminary, Chicago, IL 60614
Email: autocross@pca-chicago.org Questions? Call 773-929-8108

General Rules: Snell 1990 helmets are required. Short/Long pants and shirt. 18 years or older with valid drivers license. Member may bring one guest to event. Guest may drive members Porsche or a two-door sports car. Associate Member driving a non-Porsche is considered a guest. Maximum two drivers per car. Trophy with first car you drive. Member must be present with guest.

Driver 1 _____ Member/Guest _____

Phone Number _____ Permanent Car # _____ Model: _____

Driver 2 _____ Member/Guest _____ Model: _____

Phone Number _____ Permanent Car # _____

Total amount enclosed: _____ Please be prepared to display a valid driver's license.

If you don't pre-register, which would save time, please pay by check at registration to speed the event up. Day of the event questions contact Shawn Young at 630-205-0055.

**Winning
Your
Financial
Race?**



**Retirement
On
Course?**

Investigate Our Winning Products...

- RFS's proprietary, Risk-Adjusted portfolios
- RFS's *FREE* performance comparisons

Responsive Financial Services, Inc.

John Bonnett, President

3601 Algonquin Road, Suite 620
Rolling Meadows, IL 60008

Telephone: (847) 670-8000
E-mail: john@rfsonline.com



Street and Race Prep

**PERFECT POWER
844 Liberty Dr.
Libertyville, IL 60048
(847) 367-8837**

The Midship Report: Additions & Mods II

ARTICLE AND PHOTOS (UNLESS OTHERWISE NOTED) BY JOHN MILLER, BOXSTER_S@VERYSPEEDY.NET

I'll never finish this topic. Not that that's a bad thing. I've just had to realize the Boxster will forever be a work in progress. The upgrades and hacks are progressing but it's getting difficult to spend time in the garage when the sun is shining.

The rear speaker upgrade went in with minimal effort. The factory included instruction sheet is, in a word, crap. Instead, I followed the excellent Pelican Parts (pelicanparts.com) Tech Article Instructions—especially the color photos—and had the set operational in less than 3 hours. I assure you, the sound change is worth more than the cost of the kit. If you don't already have this, check around. Over 60% of the Boxsters I see have them and, universally, everyone swears by them.

The rear spoiler decal went on with little difficulty and it's a great addition to the car. Although I had the install instructions I found on the Babblers (babbler.org) site, the process was a bit vague. Fortunately, you don't have to be too precise when applying, but you do need to have faith in doing it as there's no removing and re-applying it. More recently, I've also seen a number of Boxsters with a 'Porsche' decal on the plastic windblocker that fits between the seats. It gives it the appearance of etched glass. One source for these is: <http://royal-sign.com/etched.html>. I've seen the actual product and it does look professional. It also got me thinking (ouch). Why couldn't I create my own? Wal-Mart and Office Depot sell clear transparency sheets that are self-adhesive. If I could (ok, I already did, just as a test) put the transparency through a color printer (ink jet and laser), I could print anything I wanted and adhere it to the windblocker. I'll have to see just how well it holds up.

The side marker experiment was also successful. Quite a few Boxster drivers I've met have opted for the clear side marker lenses to replace the stock orange lights. I went in a dif-



ferent direction and bought a pair of orange lenses and painted them seal grey. I bought a can of color-match automotive spray paint (plus clear coat) from Wal-Mart. After several light coats and some polishing, when the side-lights are off, they blend into the bodywork. When illuminated, light still shows through the paint and is distinctly orange, even in daylight. The orange light assemblies do turn up on EBAY occasionally, so take a look there if you think you want to try this.

The fire extinguisher bracket for my halon extinguisher was an easy install. I bought a Turner



Motorsports bracket made of steel and aluminum. The bracket mounts in front of the passenger seat bottom cushion using a simple 2-bolt attachment. The unanimous verdict from my passengers: "PLEASE take this

out." Yes, it's a bit obnoxious. I kept looking at it and thinking it was too big and stuck out too far. And those that snagged their pants and pantyhose on it aren't disagreeing. It occurred to me: I can do better. I looked at a few other brands and concluded this is a Do-it-Yourself job for me. I went to our trusty Home Depot and purchased a small amount of bar steel and aluminum, and proceeded to copy the bracket I bought but on a much smaller scale. A little coaxing (by way of a hammer) and I was able to angle the bracket downward enough that access to the extinguisher is still easy, but the bottle and bracket are no where as obtrusive as the original install. If anyone wants to try this option for themselves, I'd be glad to help.

The Speedster Bumps have turned into quite an exercise. I've yet to get them painted (along with the hard-top) as I'm still reeling in shock from the quotes I've gotten. I've only been to two shops and, so far, the prices range from \$650 to \$1200. Does anyone besides me think that all together it should be in the \$300-\$400 range? Installing the speedster bumps required the install of the spinlocks (you may recall from last month that I ran out and bought them without shopping around and overpaid by 100%). The hack-instructions for doing this were ok, but I found a few short addendums on the Babblers Board and Porsche Pete's Boxster Board (986board.com) that detailed (with photos) the removal of some interior trim, which made the install far less tedious and stress inducing. Installation of the actual speedster bumps *looks* to be an easy 1-2-3 process that is (alleged) to take under 2 minutes. File that under FERTILIZER, at least when placing them the first time. The mounting mechanisms have a bit of flex in them that probably allows for slight differences between Boxsters. There are no

Continued on page 52

STAGE COACH BOXSTER RUN

PHOTOS AND ARTICLE by JOHN MILLER

Fun doesn't have to be expensive. I filled up the gas tank and pointed the Boxster towards Rockton, Illinois for the start of the Stage Coach Boxster Run. And it was a BLAST. Eight other



Boxsters and my seal grey went screaming across Jo Daviess County last Saturday on roads you can't imagine existing in Illinois. Who would have guessed a 150 ft. waterfall was tucked away in the corner of NW Illinois? And what are the chances of getting excellent Cajun

food at a place called Bubba's in Galena? Our course took us through countless small towns. Towns that may see one Porsche in a week...or month. Towns that are hellandgone from the rush and crunch of

Chicago. Towns that make you wonder whether big city/big suburb life is all that appealing. Towns that I'll revisit. Thanks to PCA member Pat Hughes for organ-

izing this run. Sign me up for the next one.

And a 'special' thanks to Stage Coach runner and PCA member Ron Smith with his tricked out silver Boxster S for turning a terrific and inexpensive fun run into yet

ANOTHER withdrawal from my checking account. Ron unintentionally became a sales rep for the B&M Racing's short shift mechanism. Ron let me try his out and it took 2 shifts before I was hooked. The difference



is amazing. It's fast. It's precise. It's \$300. And it's on order. Ron promised that it's an easy install. It better be. I'm pretty sure Ron 'sold' one to fellow Stage Coach runner, Ray. ■

Body Werks of Barrington

For the Finest in
PORSCHE, MERCEDES and BMW
Work and Painting

DESI VINCZEN • 126 Cook Street • Barrington, IL
381-9144

GINGERMAN 2002

JULY 20 & 21

Gingerman Raceway is a very challenging 1.88 mile road course comprised of 11 turns, some elevation change, and LOTS of run off area. This is simply one of the safest tracks you can run.

Drivers will be placed into groups based on experience, ability, type of car, and willingness to play nice with others. Novices are welcome and will be assigned an instructor for the event. Novice groups do sell out due to a limited number of instructors, so please register early.

Before arriving at the track, it's the driver's responsibility to make sure their car will pass a Chicago Region technical inspection. A copy of the Chicago Region Tech Sheet is published in every issue of the Chicago Scene. Please take note of the helmet and apparel requirements for this event; all drivers must have a SNELL SA '95 or later helmet and full length pants, long sleeved shirts, socks, and closed-toe shoes. All clothing should be made of natural fibers (no nylon, polyester, etc.). Any tech questions regarding this event should be directed to Pete Hackenson at (630) 655-1629. All cars **MUST** pass tech inspection to be allowed on the track.

Registration and tech will be held at the track beginning Friday, July 19th at 4pm EST running until 7pm EST. Further registration and tech will be open Saturday, July 20th from 8am EST until 11am EST. All drivers will be required to present a valid driver's license at registration. Race cars, trailers, and support vehicles can be securely left at the track beginning July 19th until the conclusion of the event. Facilities at the track include race fuel, air, and a concession stand serving breakfast and lunch.

There will be **MANDATORY** drivers' meetings regarding policy and safety issues for the event on both Saturday, July 20th, and Sunday, July 21st, at 8am EST. If you miss either meeting, you will forfeit your ability to race on this track.

South Haven is a wonderful community comprised of quaint shops, the beach, restaurants, and a good amount of night life. A short drive up the road will take you to the similar and larger town of Saugatuck. This is the event to bring your non-driving companions. We will also have our now traditional Saturday evening party, complete with food, beverage, and music. This year, Jill is planning a pig roast; **OINK, OINK!** There is no cost for the party to all registered drivers; additional tickets may be purchased at the track for a nominal fee (to be determined). Feel free to call or e-mail with questions. See you at the track! Jeff, Jill, and Max Girard.

Directions to Gingerman Raceway from Chicago:
Take I-94 east thru Indiana into Michigan to I-196 north to South Haven. Exit Phoenix Road east 5 miles to the track.

First Driver

Year/Car Make/ Model/ Permanent Car Number

Address

City, State, Zip Code

Phone(s)

E-mail

Member Applicant Guest of: _____

Class: (circle applicable) [Fast] [Middle] [Novice]

Prior Experience: _____

Please include # of track days/yr., prof. driving schools, & typical lap times.

Second Driver

Year/Car Make/ Model/ Permanent Car Number

Phone(s)

E-mail

Member Applicant Guest of: _____

Class: (circle applicable) [Fast] [Middle] [Novice]

Prior Experience: _____

Pre-registered Entrance Fees:

First Driver - \$220.00 _____
2 Drivers in same car - \$260.00 _____
2 Drivers separate cars - \$440.00 _____
Total _____

Make check to PCA- Chicago Region and Mail to:
Jeff Girard, 8630 Lemont Road, Darien, IL 60561

WE GO THE DISTANCE FOR SUPERIOR SERVICE

**VEHICLE MAINTENANCE & PERFORMANCE
AUDI BMW MERCEDES PORSCHE VW**

KELLY MOSS MOTOR SPORTS

★ ★ ★ ★ ★



**STREET CAR
MAINTENANCE**



**RACE CAR
PREPARATION**

**TRANSPORTATION
SERVICES**



**MODIFICATION &
BUILDING**

**PAINT &
COLLISION REPAIR**



VINYL GRAPHICS

CHECK OUT OUR WEBSITE AT:

www.kellymoss.com



**3017 PERRY STREET
MADISON, WI
53713
608.274.5054**

NAUGHT TWO TOUR: FLYING AT Mid-Ohio

by JOHN MUELLER

Had a wonderful time at Mid-Ohio. We had three days of dry and cool weather; from Friday to Sunday the weather got warmer and sunnier. The Potomac Region was a wonderful host. The event ran very smoothly and everyone was very friendly. On Friday evening, they had a track walk led by the chief driving instructor, Don Newton. I picked up a number of good tips and applied them throughout the rest of the weekend. Chuck Bittman drove out with me. It was his first time at the track. He remarked that it was a very fun track to drive. The first photo shows Chuck washing his car at the track. This was definitely a Kodak moment, one to remember. We joined up with Leo Shapiro, a Chicago Region PCA member, who was also at the event. In the second photo, Leo's got a tiger by the tail. The tiger is his 1973 911 set up to race in GT3S.

I promised to review the Michelin Pilot Sports Cup tires, which I ran for the first time at Mid-Ohio. They certainly have more grip than the Kumho Victoracer 700s that I ran for the



Chuck Bittman prepares his car for a good showing on the track.

last year and a half. At the limit, they let go more quickly than the Kumhos but the transition can be easily corrected. I used throttle-on oversteer in the second half of the carousel, turn 14. It is a decreasing radius turn. The car was easy to control with the new



Leo Shapiro with his GT3 car.

Michelins. In another instance, the rear end started to come around on me in the keyhole, turn 4. It wasn't a sudden break-away and I was able to catch it, before the car spun around. I'm pleased with the new Michelins. I am driving 968 and ran with two more pounds in the rear tires than in the fronts. The handling was neutral with oversteer at the limit. I'm still trying to zero in on the best tire pressures. My best guess at this time is 42 psi in the front and 44 psi in the rear, when the tires are hot. I ran my best time ever at Mid-Ohio over the weekend. I'm not sure whether it was the new tires or the driving tips from Don Newton that made the difference.

On the way into town one day to have lunch, we spotted a Maybach filling up in the gas station. Its unusual two-tone paint job gave it a way. What is a Maybach? A Maybach is a new „super luxury car being introduced by Daimler-Chrysler. When we left the restaurant, two Maybachs were in the parking lot under locked car covers. The giveaways to the cars' identities were special license plates issued to Mercedes-Benz that appear through mesh in the covers and the extremely long wheelbase of the cars. Also, it looked like the wheels were 20 inches in diameter. The Maybach is meant to compete with Rolls Royce. We got a rare glimpse of what will be a very rare car. ■

FN Flying Inc. now has a presence on the Web. Check it out at <http://members.telocity.com/JohnMueller/FNflying.htm>.



1970 Canary Yellow 914-6. In its 32 years the car has had just three owners and all were PCA members. The current owner is Bob DiLeonardi of Glencoe, IL.

PCA BROOKFIELD ZOO TOUR & IRISH TIMES SOCIAL EVENT

Date: Sunday, August 4, 2002

*Time: 1:00 PM
(meet at the Discovery Center just inside
the North Gate Zoo entrance)*

*Place: Brookfield Zoo
Location: 31st Street and Golf View Road
in Brookfield, Illinois.*

*Just off 1st Avenue between the
Eisenhower (I-290) and Stevenson (I-55) expressways
in Brookfield, Illinois.*

Brookfield Zoo Telephone number: 708-485-0263

Bring out the entire family, including your kids and mother-in law and visit more than 3000 animals from around the world. Brookfield Zoo is situated on 216 beautiful acres located just 14 miles from downtown Chicago. Please meet us at the Discovery Center at 1:00 PM and receive a packet of scavenger hunt questions. This event will take approximately 3 hours and cover a portion of the zoo. Afterwards, join us at The Irish Times Restaurant at 8869 Burlington Avenue in Brookfield, Illinois (Prairie and Burlington located approximately 2 miles from the Zoo.) Irish Times Tel. 708 485 8787.

You may want to join us for fun in the beer garden at approximately 4:00 PM, even if you are not attending the zoo tour! In the event of rain, please join us for a terrific social event at The Irish Times. The zoo tour will be canceled if it is raining.

Located next to the Irish Times is the world famous Cock Robbins Ice Cream Parlor, which we are sure the kids will enjoy!

There is no fee for this event! Please call we will need to know how many people will be attending.

*Dinner: Order off the menu with separate checks. There is a children's menu available.
Prizes will be awarded to the winners of the scavenger hunt!
General Zoo Admission: Adult \$7.00 Child/Senior \$3.50
Parking: \$6.75*

Must park in the North Gate Parking Lot (off 31st Street)

Please contact Peggy or Dan Gallagher if you will be attending the Zoo tour and/or the Irish Times Social Event! Tel: 708-784-0784

Please respond by August 4th at 10:00 AM.

Blackhawk Farms Raceway - Drivers' Education

Wednesday, August 14th

Blackhawk is a great road course and this August 14th event is sure to please. Blackhawk is an eight turn 1.9 mile enclosed, high-speed racetrack located in South Beloit, on the Wisconsin border, only 90 minutes from Chicago.

Most Blackhawk events are sell-outs, so pre-register as early as possible to assure a spot. Waiting lists will be used to fill any open spots. Cancellations & refunds will be honored until the prior Monday at 9 p.m. for the Wednesday event.

Mandatory clothing for all drivers at this event includes: a Snell SA 1995 or 2000 Helmet, long sleeve cotton shirt, long pants, socks, all made of non-synthetic materials, and closed toe shoes. Recommended but not mandatory are: driver's suit, driving gloves, driver shoes and a protective neck brace all made of Nomex or similar fire-resistant material, as well as a mounted fire extinguisher. Please check the date on your helmet now, as it will be inspected during the Tech Inspection at the track. If you and your car do not pass Tech Inspection, you will not be able to drive. You will be required to show a valid drivers license (no tickets accepted) along with a valid PCA Membership at registration.

You can save time at the track by bringing your car to a recognized Porsche Dealer or Porsche Specialty Shop for mechanical inspection and having them complete, sign and stamp the Chicago Region Tech Inspection Sheet. Review the NEW Updated Year 2002 Tech and Safety Requirements - there are changes from the prior year! Pay particular attention to specifics concerning brake pads and fluid, since Blackhawk is very hard on the brake system!

Blackhawk Concession Stand serves breakfast from 9 a.m. until 10 a.m., lunch from 10 a.m. until 1 p.m. The Accessories Store sells gas (leaded & unleaded Race only), air, and showers all day.

General Schedule:

- 8:00 a.m. - Registration & Tech Open
- 9:30 a.m. - Mandatory Drivers' Meeting
- 4:30 p.m. - Last Car off Track

Questions: Pete Hackenson (630) 655-4661, 1629 (Home)
phackenson@hotmail.com

Directions:

North on Northwest Tollway (I-90) to IL 75 just before WI State line. West on IL 75 to "T" (Blackhawk Road). Right to Shirland (2 blocks, across tracks). Left on Shirland (1 mile) to Fischer. Left on Fischer to "T" (Prairie). Left at "T" to Blackhawk Farms Raceway entrance on right. Gas stations - Mobil & Clark on Shirland.

First Driver

Year/Car Make/ Model/ Permanent Car Number

Phone

E-mail

Member Applicant Guest of: _____

Class: (circle applicable) [Instr] [A] [B1] [B2] [C] [Novice]

Prior Experience: _____

Second Driver

Year/Car Make/ Model/ Permanent Car Number

Phone

E-mail

Member Applicant Guest of: _____

Class: (circle applicable) [Instr] [A] [B1] [B2] [C] [Novice]

Prior Experience: _____

Pre-registered Entrance Fees:

First Driver - \$150.00	_____
Second Driver - \$150.00	_____
Second Driver - \$75.00*	_____
Total	_____

* The \$75.00 fee only applies to family members who drive the same car as the first driver.

Make check to PCA- Chicago Region and Mail to:
Pete Hackenson
3613 Fairview Ave. Oak Brook, IL 60523-2687

For more information on Track Events, Schedules, Tech & Safety Requirements Information use the WEB at WWW.PCA-Chicago.org.
For more Blackhawk information go to WWW.namotorsports.com/Tracks/Blackhawk.html.

6th Annual PCA Golf Outing & Dinner

By Ed Barnicle

Now that you have gotten the Porsche and the lawn mower out of winter storage, it's time to find the golf clubs as well. That means that it's time for you to stop thinking about driving your Porsche for a few minutes, and to think about driving a Titleist instead. The sixth annual Chicago Region Golf Outing will be held once again at **Flagg Creek Golf Course** in Indianhead Park on **Saturday, August 17th**, starting at 2:15 PM. Invited guests include Arnold Palmer, Tiger Woods, Michael Jordan, and Mike Ditka. Come out to see if they show up after finding out that such fearsome players as Ron Micek, Pete Hackenson, Dan Gallagher, and Jim Drury are likely to participate!!!

Flagg Creek is a nine-hole course with an interesting combination of holes that won't intimidate a beginner, but will challenge an experienced player trying to shoot par. However, this outing is more about having summer fun than serious golf, hence our rule "Cheat only if you are sure you won't get caught!" The event chair(myself) assigns the teams and makes the rules to assure that everyone gets the chance to contribute to their team's success while bringing out the competitive spirit that our members usually exhibit. Members wishing to bring a guest(s) will be able to play with their guest(s). The registration fee of \$38.00 covers green fees and trophies. Carts will be available for those who want them at the regular course rental rate.

This event is great fun regardless of your skill level. Even if you can't make it for golf, please join us for dinner at a yet-to-be-determined spot near the golf course starting about 6:00PM.

Please note that our 36 openings will fill up fast; and that pre-registration is mandatory, and closes on August 9th. This mandatory registration is necessary because Flagg Creek requires a guaranteed number of players no later than one week prior to the event.

Questions? Call Ed Barnicle @ 630-323-2963 between 7:00PM and 9:00PM. **Make your check payable to PCA Chicago Region, and mail it to Ed Barnicle, 3 Hanover Court, Burr Ridge, IL 60527-8307.**

Directions:

From the North: I-294 south to the I-55 exit. Pay toll & exit immediately at the Joliet Road option. Turn right at the 1st light (Wolf Road). One block to the course entrance.

From the South: I-294 north to I-55 south exit. Take the Wolf Road option. Right one block to the course entrance.

From Chicago: I-55 south to LaGrange Road (Rt. 45) north. LaGrange Road north to Joliet Road. Joliet Road west to Wolf Road. Wolf Road south to the golf course.

In addition to name and phone number, please circle symbol indicating how often each registrant plays or give us your handicap: N=Never Before S=Sometimes O=Often H=Handicap

Name: _____ Phone # _____ N S O H _____
Member ___ Guest ___ of _____

Name: _____ Phone # _____ N S O H _____
Member ___ Guest ___ of _____

_____ # of Registrants @ \$38.00 each \$ _____ Amount enclosed

AUTOCROSS 2 RESULTS

Name	Car #	Year	Model	Class	Region	Best Time	DNF	Overall Place	Class Place		
Kirk	Jurinek	992	74	914	P1	Chicago	0:51.170	No	8	1	
Shawn	Young	88	87	924S	P2	Chicago	0:49.293	No	3	1	
Mike	Gallagher	416	87	924S	P2	Chicago	0:52.021	No	10	2	
Edward	Myers	605	83	944	P2	Chicago	0:59.750	Yes	38	3	
Amy	Lewand	650	83	944	P2L	Chicago	1:14.343	Yes	38	1	
Mark	Rutter	176	72	911	P3	Chicago	0:57.202	No	25	1	
Mike	O'Meara	95	72	911T	P3	Chicago	0:00.000	Yes	38	2	
Rich	Grotemeyer	251	89	951	P4	Chicago	0:53.335	No	13	1	
Ed	Russ	59	911	944S2	P4	Chicago	0:55.304	No	21	2	
Bill	Kidder	409	99	Boxster	P4	Chicago	0:58.305	No	32	3	
Andre	Robetwskyj	600	00	Boxster	P4	Chicago	1:00.186	No	36	4	
Ray	Schlueter	428	02	Boxster	P4	Chicago	0:10.601	Yes	38	5	
Gregory	Longoria	602	90	944S2	P4	Chicago	1:02.518	Yes	38	6	
Christy	Russ	51	91	944S2	P4L	Chicago	0:58.844	No	34	1	
Shirley	Bayliff	706	98	Boxster	P4L	Chicago	1:07.640	No	37	2	
Brandon	Hackenson	151	87	911	P5	Chicago	0:50.103	No	4	1	
Pete	Hackenson	16	87	911	P5	Chicago	0:50.887	No	7	2	
Dan	Cubric	939	84	911	P5	Chicago	0:54.631	No	17	3	
Bob	Teasley	767	89	911	P5	Chicago	0:54.987	No	18	4	
Ian	Stone	826	87	911	P5	Chicago	0:56.865	No	24	5	
David	Mansfield	247	83	911	P5	Chicago	0:58.121	No	31	6	
Anthony	Janairo	294	00	BoxS	P6	Chicago	0:53.595	No	15	1	
Glenn	Gray	770	00	BoxS	P6	Chicago	0:47.375	Yes	38	2	
Greg	Turek	5	91	911C2	P7	Chicago	0:50.303	No	5	1	
Richard	Harris	851	93	911RSA	P7	Chicago	0:52.021	No	11	2	
Mike	Faems	951		993	P7	Chicago	0:56.033	No	22	3	
Sami	Daher	608	97	C4S	P7	Chicago	0:56.402	No	23	4	
Joe	Martinez	408	91	911	P7	Chicago	0:58.507	No	33	5	
Bruce	Rohner	54	91	964	P7	Chicago	1:02.314	Yes	38	6	
Marla	Turek	15	91	911C2	P7L	Chicago	0:52.521	No	12	1	LFTD
Linda	Gutmann	14	96	993	P7L	Chicago	0:57.699	No	28	2	
Michelle	Stahmann-H	274	98	993	P7L	Chicago	0:53.634	Yes	38	3	
Nick	Peterson	668	02	996	P8	Chicago	0:51.528	No	9	1	
Jon	Jester	606	02	996	P8	Chicago	0:53.360	No	14	2	
Tim	Taylor	219	02	996	P8	Chicago	0:54.220	No	16	3	
Devin	Dallaire	601	01	996T	P8	Chicago	0:55.173	No	19	4	
Rick	Gunderson	373	02	996	P8	Chicago	0:55.183	No	20	5	
Brent	Jester	660	02	996	P8	Chicago	0:57.788	No	29	6	
Peggy	Peterson	899	02	996	P8L	Chicago	0:58.070	No	30	1	
Tony	Koufos	97	72	911	M	Chicago	0:47.369	No	1	1	FTD
Shawn	Young	609	82	GTI	X	Chicago	0:49.002	No	2	1	
Mike	Gallagher	91	87	GTI	X	Chicago	0:50.740	No	6	2	
Ed	Russ	12	97	Miata	X	Chicago	0:57.638	No	27	3	
Mike	Gallagher	94	02	M3	X	Chicago	0:52.432	Yes	38	4	
Amar	Trivedi	603	01	M3	X	Chicago	0:59.472	Yes	38	5	
Vamsi	Surapaneni	604	97	Prelude	X	Guest	1:02.695	Yes	38	6	
Christy	Russ	13	97	Miata	XL	Chicago	0:57.517	No	26	1	
George	Gutmann	4	96	993	MST	Chicago	0:59.238	No	35	1	

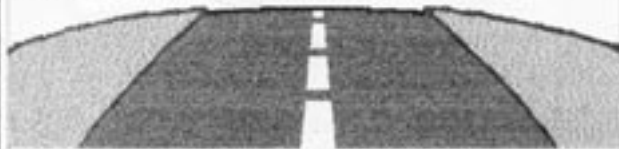
STRASSE

Your Avenue to Porsche Parts and Accessories

From bumper to bumper, stock to high performance, Strasse carries all the parts you need. Car covers, bras, car wash and waxes, mats, sheepskins, torsion bars, springs, shocks, performance chips, brake conversions, OE and aftermarket restoration parts, and so much more.

With 19 years of Porsche parts and high performance experience, Gabe and Robin Szalay are confident they can deliver the best service at the right price.

Call, fax, email or stop by our showroom Monday - Friday 8:00 am to 5:00 pm.



Toll Free (877) 944-9911

Local (805) 460-2565

www.STRASSEUSA.com

Fax (805) 460-2580

sales@strasseusa.com

5915 Entrada Avenue, Atascadero, CA 93422

DC Construction

DOUG COUP



REMODELING AND ADDITIONS
BATHS, KITCHENS, BASEMENTS AND DECKS

PHONE: 847-429-0794

Chiropractic-Naprapathy-Massage Therapy-Acupuncture-Customized Vitamins

Moran-Schaefer Clinic

1111 W. Dundee Road

Wheeling, IL 60090

(847) 541-6648

Tues. & Thurs. 9:00 to 5:00 Wed. & Fri. 9:00 to 4:00 Sat. 8:00 to 12:00

Richard A. Schaefer

Chiropractor

Naprapath

Nutrition Counselor

Amy McManaway

AMTA Certified Massage Therapist

Peter Lundberg

Certified Acupuncturist

Associated Mortgage LLC



Craig Standing
Senior Consultant
Member P.C.A.
708-344-7200-Office:
708-344-7201-Fax
847-917-0617-Cell

A Full Service Mortgage Company
Commercial / Residential / Industrial
Professional and Confidential

John McNana
Account Executive
Office: 708-344-7200
Fax: 708-344-7201
Cell: 847-287-1712



Associated Mortgage Corporation 1127 S. Manheim Rd., Suite 103 Westchester, Illinois 60154
Associated Mortgage LLC is an Illinois Residential Licensee. Funding is provided by separate entities subject to availability. Rates and points are subject to change without notice.

PREPARING FOR A DRIVERS' ED EVENT

by RUSS PESKO RACETEACHER@MSN.COM OR GOFAST@SNIP.NET

Have you gone to a DE or autocross event, and realized after you got there that you've forgotten something? This has happened to me on a few occasions, and I got tired of it. Having done several Autocross and DE events over the past few years, I have found that after I've left home or worse after arriving at the track that I've forgotten something. Not always the same thing, of course, then it would be easier to remind oneself 'not to forget *that* again.'

So, a while back I started making a simple checklist of things to remember to pack while getting

I bring my own pillow if staying overnight, since I have a problem with foam pillows and most hotels don't offer a down pillow.

ready for an event. Over time, I have developed this list to its current form, which I call the Race Day Checklist. At one time, it was a 2-part list since I also used to autocross and things needed are different. However, now it has been filtered down and tailored to DE. You may need or want to modify it to suit for taste. Either way, it's a beginning. This form can be downloaded from the Chicago Scene download area for further modification. (It's a MSWord document.)

I bring my own pillow if staying overnight, since I have a problem with foam pillows and most hotels don't offer a down pillow. So that's why it's on the list, as is med-

icine. Most of the time when you go to an event you'll be gone all day (if not overnight), and you may need to take some medicine every 4, 6, or 12 hours. Take what you may need, but read your warning labels as some things may impair your driving. Safety first!

Some of the other items are optional, but useful. Even if I don't carry the small bag of useful tools I made up (like screwdrivers, wire strippers, wire cutters, small ratchet with sockets, electrical tape, adjustable wrench, and a flash light), take along a Leatherman or similar multi-use pocket knife (Swiss Army, etc.). Besides a tire pressure gauge (something everyone should have), a core tool can make the difference between sitting out the rest of an event and solving a simple problem. If you don't have one, you can make one by simply getting an old valve stem and tightly screwing on one of those metal valve caps that has the slot for use on the valve core.

A small first aid kit is good to have. It should contain bandages for cuts, a little disinfectant, and some burn ointment. Those with bee sting allergies should have a sting kit as well. I list a fire extinguisher which isn't really required until you are running in the advanced and up groups.

I left a few lines open at the bottom for notes or reminders. I used to forget to adjust the front shocks until after I wondered why I wasn't getting the cornering bite I expected, so I wrote down "Don't forget to dial down the shocks." I take the list to the track with me, since it acts as a handy inventory to sheet to make sure you have all

your stuff before you go home. Plus that way you always have a piece of paper, in case you meet someone and need to jot down a phone number, an e-mail address, and so on.

That about covers it. I'm a pretty good shopper, and have found the best prices for most of the items on the list. So if you're interested in anything and want to know where to get it, send me an e-mail. I'll be glad to share my sources and expected prices. I like making my car better for doing events and being more comfortable, but also refuse to drill any holes or make permanent changes, so as to keep the car as original as possible.

Drive fast, have fun, but be safe. Happy motoring. ■

Editors Note: the checklist on the next page is not Russ' but one provided by Ed Leed.

Racers tape is different from duct tape, although they look the same. The main difference, besides color, is that racers' tape has less adhesive so it comes off easier. The glue cleans up by just using glass cleaner and a soft cloth. The more wax you have on the car, the easier it is to clean. I advise using tape to protect your headlight, turn signal, and fog light glass. A pebble becomes a missile at speed on the track, and I'd rather spend a few dollars on tape than replace a headlight lens, which certainly isn't cheap. It may also come in handy for numbering your car. - Russ Pesko

WeatherTech[®]

Automotive Accessories

CLASSIC[™]

Premium Rubber Mats



Applications available in Black, Tan and Grey for virtually any vehicle!

ADVANTAGE[™]

Luxury Carpet Mats



Cargo Liners



Cargo Liner applications to fit over 900 vehicle models!



WeatherFlectors[™]



WeatherFlectors[™] applications to fit over 600 vehicle models!

Pet Barrier



MacNeil[®]

800-441-6287
mats.com

MacNeil Automotive Products Ltd. • 2435 Wisconsin Street • Downers Grove, IL 60515 • 630-769-1500 • fax 630-769-0300

Leedlast Racing Team Packing Checklist

- Helmet
- Balaclava
- Driver Suit
- Nomex Underwear
- Nomex Socks
- Nomex Gloves
- Driving Shoes
- Ear Plugs
- Pillow
- Sun Glasses
- Hats
- Work Gloves
- Work Clothes
- Rain Suits
- Boots
- Umbrella
- Chewing Gum
- Stopwatches
- Clipboards
- Event Registration
- Log Book
- Shop Manual
- Pre-Race Safety Checklist
- Track Book
- Numbers
- Scanner
- Radios
- Pit Board
- License Plate
- Handi Wipes
- Towels
- Wash Cloth
- Soap
- Hand Cleaner
- Bucket
- Water Jug
- Car Wash Towels
- Rags
- Canopy
- Tarp
- Lawn Chairs
- Flag
- Boards
- Carpet
- Beach Mats
- Jack
- Jackstands
- Wheel Chocks
- Tire Gauge
- Air Tank

- Air Compressor
- Cordless Drill
- Power Inverter
- Flash Light/Batteries
- Porta-Potty
- Coolers
- Ice
- EZ-Up
- Ramp
- _____
- _____

<Tools>

- Torque Wrench
- 1/2" Ratchet
- 1/4" Metric Sockets
- 3/8" Metric Sockets
- 1/2" Metric Sockets
- Lug Nut Socket
- Metric Wrenches
- Hex Wrenches
- Jacking Tool
- Ball Peen Hammer
- 3# Hammer
- Screwdrivers
- Small Tools
- Pliers
- Adjustable Wrenches
- 32/36mm Oil Line Wrench
- Standard SAE Sockets
- Standard SAE Wrenches
- Air Wrenches
- Brake Bleeder Tank
- Brake Bleeder Hose
- Brake Fluid
- Brake Pads
- Brake Cleaner
- Racer Tape
- Silicone Sealant
- Spark Plugs
- Nuts and Bolts
- Loctite
- WD-40
- _____
- _____

<Parts>

- Clutch Cable
- Fuses
- Ignition Electrical Parts
- Brake Rebuild Kits
- Timing Light
- Dwell Meter
- Spare Brake Cool Scoops
- Fuel Hose
- Lights
- Extension Cord
- Trouble Light
- Jumper Cables
- Yellow streamer ribbon
- Flags
- Canopy Frame Joints
- Tie Down Straps & Stakes
- Car Towels
- Paper Towels
- Window Cleaner
- Kozak Cloth
- Final Inspection
- Car Wax
- Engine Oil
- Trans Oil
- Bearing Lube
- Parts Solvent
- Drain Pan
- Funnel
- Spare Brake Rotors
- Spare Clutch
- _____
- _____
- _____
- _____
- _____
- _____
- _____
- _____

FROM HERE TO THERE RALLYE RECAP

ARTICLE AND PICTURES by JACK STEPHENSON

EVENT DATE: JUNE 2, 2002

The second rallye of the year was held on June 2nd and my congratulations go out to Chuck Bittman and Lee Lichtenstein for putting on a great event. The rallye started at Coleman's Restaurant in Algonquin and ended at Deeter's Restaurant in Woodstock. It was a great day covering a bunch of great roads.

What a beautiful site a parking lot full of Porsche's can be. In fact, in this case it almost resulted in an accident. It seems two young men driving a souped-up Honda Civic



Lee Lichtenstein, Tom Harwood and Chuck Bittman

spotted all the Porsche's (and one Mini Cooper) parked in the restaurant parking lot as they were driving down Highway 14. They decided to check out the cars and at the last minute they turned onto the side street next to the parking lot. But they were carrying a little too much speed for the turn, so they locked up all their wheels and nearly slid into a signpost on the side of the road. When they finally made it into the parking lot, they were given all sorts of friendly advice on how to properly make a high-speed turn and given some instructions in the art of threshold braking!



Glenn, Sandy and Lori Sapa along with Dustin Hodge going over the General Instructions.

I knew it was going to be a tough day when Karen (my navigator and so much more!) told me that she had a nightmare about the rallye. She had dreamed we were going to end up in last place. Well, it seems some dreams do come true. We didn't quite end up in last place, but we came pretty close. This is what makes rallying so much fun! There is always something to learn or re-learn. We made two simple mistakes during the course of the rallye.

The first was not trusting ourselves. The instruction we were working on had us looking to make a CAST change at Leech Road. This was followed by an instruction that had us making a right turn on Olson Road. Now the trap was that you came to a T at Olson Road before you came to Leech Road. When we came to the T we should have made a left hand turn per the Main Road Rule -Left at T- since we hadn't seen Leech Road. After that, we would have come to Leech and made our CAST change. The route would

then have taken us back to a point where we would have been able to turn right on Olson. But instead of doing that, we assumed we had missed Leech and then just made the right hand turn on Olson at the T. Well, this brought us into the checkpoint 6 minutes early and had us scratching our heads on what had happened. After realizing what we had done, the only thing we could say was: "GREAT TRAP, Lee and Chuck!"

The second mistake was a real no-no. After getting our checkpoint slip at the second to last checkpoint, we failed to read it completely. This is a big mistake, because special instructions are either given or cancelled on these slips. So by not reading the Checkpoint slip completely, we missed the fact that the "ONTO Union" that had been in effect since almost the beginning of the rallye, was cancelled. An ONTO instruction states that you must re-enter a road when you come across it again after being put ONTO that road. This caused us a problem when we were working on an instruction that said "Right



Everyone listens attentively at the Driver's meeting.

on Union or Vermont." When we came to Union Road, we couldn't



First time rallyists Carl Walstad and Kim Wicks.

turn right on Union since it was a side road to the left, but we could turn left because we thought the "ONTO" was still in effect. So we made the turn and began to look for Vermont. After driving down the road for several miles and not finding Vermont, I heard Karen say, "Oh S*!&, they cancelled the ONTO." It was then that Karen learned to appreciate the 911's excellent acceleration and braking capabilities. I also remembered how important patience is in the relationship between Driver and Navigator and how humbling rallying can be, especially when you miss a checkpoint! Needless to say, in our rush to get back on course we mis-counted our opportunities to make a turn. Instead of turning on the second opportunity as the instruction stated, we turned on the third opportunity. Well, (to make a long story short) when I turned into the driveway of a per-

son I had seen doing some yard work, he greeted me with, "Let me guess, you are on a rallye and your lost!" After giving us directions to get back to Deeter's

(which was now 18 miles away), he gave me some advice that I



Ed Leed, Andy Pliplys, and Brad Huston pose with Lee Lichtenstein showing off his Parade 2001 shirt.



Phyllis Harwood, Lee Lichtenstein, Debbie Leed, and Tom Verachttert at the registration table.

don't think I can follow. As we pulled away he yelled, "Always blame it on the navigator!" You can be sure I won't be taking that advice!

Nevertheless, it really was a great day and we have had many laughs about it already. Congratulations must go out to Nick and Peggy Peterson for winning



Kim Wicks, Ed Barnicle, Dan Gallagher and David O'Bryan relax after the rallye.

the rallye. This is their first win with the Chicago Region. Once again, I would like to thank Lee and Chuck for all their work and for putting on a such a great event. I would also like to thank Ron Micek and Martha Kuffel for pre-running the rallye, along with Mike and Anita Hass, and Bob and Shirley Cook for working the checkpoints. And last (leedlast that is) but not least, my thanks to Ed and Debbie Leed for working registration at the rallye. But most of all, I would like to thank all those people who showed up to participate in the event!

The next Rallye is scheduled for August 25th. Jim and Cindy Jacisin will be the rallyemasters for the event. Watch the Scene and the website for further information. Also, please keep the weekend of September 14th and 15th open. This is the weekend we will be rallying with the Milwaukee Region. It should be a great event! ■



Nick Peterson, Linda Bacin and Mel Westophal calculate their scores.



Tom Verachttert and Michael Webb wait at an outmarker in Tom's beautiful Gold Cabriolet.

FROM HERE TO THERE RALLYE RESULTS

Seat-of-the-Pants (SOP)

Checkpoint

Place	Car #	Driver	Navigator	Car	#1	#2	#3	#4	#5	Total
1	8	Nick Peterson	Peggy Peterson	996	71	22	21	65	113	292
2	11	Dan Gallagher	Peggy Gallagher	Boxster	41	44	307	50	30	472
3	13	Tom Thompon	Kristi Moen	Boxster	180	22	217	23	32	474
4	10	David O'Bryan	Heather O'Bryan	911	3	6	500	19	31	559
5	17	Ed Barnicle	Gayle Barnicle	996	46	3	500	26	23	598
6	14	Charlie Pyne	Dave Mathews	911	65	25	500	38	8	636
7	1	Tom Harwood	Phylis Harwood	911	36	76	500	54	7	673
8	2	Tom Verachtart	Michael Webb	911	30	70	500	157	34	791
9	18	Dan Bacin	Linda Bacin	Mini Coop.	32	9	425	151	371	988
10	6	Carl Walstad	Kim Wicks	Boxster	179	250	500	71	219	1219
11	3	Jack Stephensen	Karen Brown	911	20	41	500	21	700	1282
12	9	Andy Plioplys	Brad Hutson	911	32	250	500	295	264	1341
13	4	Glenn Sapa	Sandy Sapa	Boxster	478	250	500	76	286	1590
14	17	Dustin Hodge	Lori Sapa	Camry	208	700	500	100	351	1859
			Maximum	478	700	500	295	700	1859	
			Minimum	3	3	21	19	7	292	
			Average	102	126	426	82	176	912	

Rallyemaster

Chuck Bittman

Lee Lichtenstein

Pre-Run

Ron Micek

Marth Kuffel

Corner Wrk.

Mike Haas

Anita Haas

Bob Cook

Shirley Cook



Select Pre-Owned Sports Cars

2215 W. Belmont Avenue
Chicago, IL 60618
773.325.1690
midwestperformancecars.com

MIDWEST

PERFORMANCE CARS

AUTOCROSS FOUR

THE NEED FOR SPEED

*Sunday, August 11th – Lake Geneva Speedway
Presented by Jurt & Angel Jurineck*

The autocross family is heading back to Wisconsin. Lunch, air, and bathrooms are available at the Lake Geneva speedway. We will run the oval and the infield track so bring your Porsche or other sports car out.

Directions: Exit Hwy 50 (Lake Geneva Exit). Go West about 20 miles. 3rd stop light in Lake Geneva is County Road H. Go left. Proceed to 2nd Stop sign. This is Bloomfield Road. Go left. Speedway is a 1/2 mile East.

Time: 9:00-10 a.m. Registration and Technical Inspection opens
10:15 a.m. Tech is closed
10:15 a.m. Drivers meeting
10:30 a.m. First car off. Let the fun begin.
3:30 p.m. Trophy presentation

First driver: \$30.00 member \$35.00 non-member guest - member must be present
Second driver: \$15.00 family member \$35.00 non-member guest - member must be present
\$30.00 member sharing car with other member

Please register by mail. E-mail is okay with check mailed separately. (Checks payable to PCA-Chicago Region.) Please pay by check.

To: Shawn Young 17W260 Rodeck Lane. Bensenville, IL. 60106
Email: autocross@pca-chicago.org Questions? call 630-941-9336

General Rules: Snell 1990 helmets are required. Short/Long pants and shirt. 18 years or older with valid drivers license. Member may bring one guest to event. Guest may drive members Porsche or a two-door sports car. Associate Member driving a non-Porsche is considered a guest. Maximum two drivers per car. Trophy with first car you drive. Member must be present with guest.

Driver 1 _____ Member/Guest _____

Phone Number _____ Permanent Car # _____ Model: _____

Driver 2 _____ Member/Guest _____ Model: _____

Phone Number _____ Permanent Car # _____

Total amount enclosed: _____ Please be prepared to display a valid driver's license.

If you don't pre-register, which would save time, please pay by check at registration to speed the event up. Day of the event questions contact Shawn Young at 630-205-0055.

Joe Rizza Porsche...

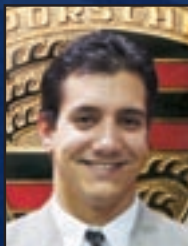
The Fastest Growing Porsche Dealer In The USA

- Great Selection & Prices
- Pre-Driven Porsche Inventory
- State-of-the-Art Service Department
- Porsche Parts Inventory
- Factory Trained & Certified Technicians
- Free Service Loaner

Professional Porsche Consultants



Aaron Zelinski
Porsche Sales Mgr.



Anthony Rizza
Porsche Sales



Frank Torres
Porsche Sales



George Serritella
Porsche Sales

*Targas, C4s and
Turbos Available For
Summer Delivery!*



JOE RIZZA

PORSCHE®



ry

A



159th Street & 80th Avenue
ORLAND PARK

708 403-0300

SHOWROOM HOURS: *Daily 9-9:30 & Saturday 9-7:30*

 **www.rizzacars.com**

PICTURES FROM DRIVING SCHOOL

PHOTO'S by MIKE RENDEE & SCOTT ADLEMAN

EVENT DATE: APRIL 28, 2002



Drive Around the Neighborhood Rallye

What could be more simple than a Sunday drive around town?

WELCOME

On August 25th, start your Rallye with breakfast at Fresh Start Café in Elmhurst and Rallye your way through the beautiful tree lined streets and homes of Elmhurst, Oak Brook, Hinsdale and back again, where we will all Rallye at McNally's Traditional Irish Pub at 3:30 pm.

Fresh Start Café is located at, 1038 S. York Rd. in Elmhurst, between Butterfield and Roosevelt Rd. 630.279.9997

McNally's Traditional Irish Pub is located at 122 S. York St. in downtown Elmhurst, just south of the Metra tracks. 630.941.7100 www.mcnallysirishpubs.com

<i>10:30 am</i>	<i>Registration opens at Fresh Start Cafe</i>
<i>11:00 am</i>	<i>Novice Rallye School</i>
<i>11:30 am</i>	<i>Drivers Meeting</i>
<i>12:31 pm</i>	<i>First car off</i>
<i>3:30 pm</i>	<i>Every Club Member is welcome to join us for a Post Rallye critique, dinner and awards at McNally's Traditional Irish Pub in Elmhurst.</i>

Rallye Fee: \$20 early registration per car or a \$25 on site registration per car.

Please make checks payable to: Jim Jacisin 508 Rex Blvd. Elmhurst, IL 60126

Driver: _____ Navigator: _____

Phone: _____ Phone: _____

E-mail: _____ E-mail: _____

Member/Applicant Guest of: _____

Car Model/Color: _____ SOP/Equipped Touring

*Questions: Call Jim Jacisin 630.279.4835 email: james@design-dept.com
or Cindy Jacisin 708.562.6353 email: jacisic@vankampen.com*

If there are any non-rallyists who would like to work, please call or e-mail us .



Imagine...

Your Own Private Autobahn!

Introducing the Autobahn Country Club in Joliet... designed to bring you the best of motorsport, leisure and entertainment facilities. The track and facilities of the Autobahn Country Club are being designed to cater to all forms of motorsports, and to provide members with a great environment for racing, touring, concourse and entertaining.

We've enlisted preeminent road course designer Alan Wilson to develop the Autobahn Country Club's Grand Prix track. Alan's work includes the South Carolina Motor Sports Park and the GingerMan Raceway in Michigan. Before becoming a full time motorsports facility designer, Mr. Wilson was a national level competitor in both car and motorcycle racing.

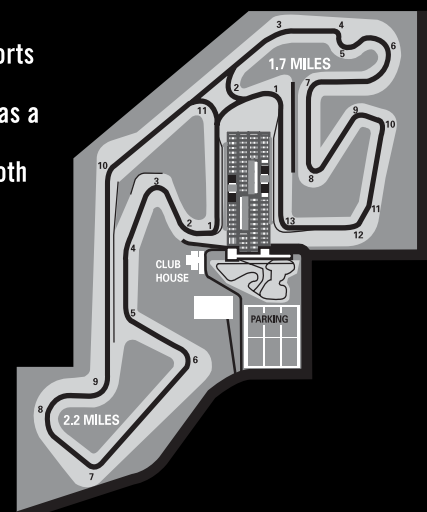
Track Features:

- 2.2 Mile Track | 11 Turns
- 1.7 Mile Track | 13 Turns
- 4 Mile Track | 22 Turns
- 1 Mile Shifter Kart



Visit our website...

www.autobahncountryclub.net



*Chicago's Premier Classic
and Special Interest Automobile Invitational*

The Cuneo

Concours d'Elegance V

Sunday August 18, 10:00 am to 4:00 pm
Admission: Show Fields & Gardens - \$5

A presentation of fine automobiles by several of Chicago's collector car clubs and a fashion show displaying pre-war and post-war styles.

The Cuneo Museum & Gardens
1530 N. Milwaukee Ave. Vernon Hills, IL
Information: 847.362.3042



Show Car Pre-Registration Required by August 1st. Fee: \$20
PCA questions: Pat Yanahan 630.887.7605

Presented by Porsche Club Chicago and The Cuneo Museum

WIN! WIN! WIN!

A BEAUTIFUL, BRAND NEW 2002 PORSCHE BOXSTER S!

This is an exclusive offer for Porsche Club of America Members.



All Proceeds Benefit the American Cancer Society

**Only \$100
per ticket!**

The drawing will be held on
Friday, August 2, 2002

**Only 1,000 tickets
will be sold!**

at 10:00pm (EST) / 8:00pm (MST)

at the American Cancer Society, 538 Preston Avenue, Meriden, CT.

During the drawing, American Cancer Society staff will be on the phone with Porsche Club of America staff. The moment the winning ticket is drawn in Meriden, CT, the winner will be announced at the Porsche Parade in Boise, ID!

For ticket(s) or information, please call toll-free 1-800-572-0757
or complete the ticket order form (below) and mail \$100 for each ticket desired to:

American Cancer Society

Accounting Center for Raffles, 538 Preston Avenue, Meriden, CT 06450-1004

YES! I WANT TO WIN A BRAND NEW 2002 PORSCHE BOXSTER

Please send me _____ raffle ticket(s) at \$100 each. Enclosed please find my check for \$ _____.
I understand you will fill out my stub(s) and enter it/them in the raffle and send me my raffle ticket(s).



If you have any questions about this raffle, please call us toll-free at 1-800-572-0757
(M-F, 9am-4:30pm) or fax us toll-free at 1-800-572-0797.

Name: _____

Address: _____

City/Town: _____ State: _____ Zip: _____

Home phone: _____ Business phone: _____

Drawing: August 2, 2002
Make check payable to:



"Drive to Drummond"

Join the WMR/PCA on July 25-28 for the Second Annual Drive to Drummond. Drummond Island is the most eastern drivable part of Michigan's Upper Peninsula. There are a wide range of activities available. Accommodations are at the Drummond Island Resort, 800-999-6343. Need more information? Feel free to call or e-mail your host and hostess: Barry and Candis Collick, Kazoo: (616) 345-2488, Island: (906) 493-6077, Email: cblick@iserv.net.

Test Drive Formula One

Many will consider this a dream come true: taking a test drive in a 700-bhp Formula One racing car. Experience the feeling of a lifetime whilst negotiating chicanes and hairpin bends. Sample the incredible atmosphere on the track and at the pit stops. Testing the complex interplay between engine, brakes and tires doesn't have to remain a dream. Enjoy sheer F1 exhilaration, first-hand, at the popular Circuit de Catalunya near Barcelona. But the excitement doesn't stop at the wheel. For a truly memorable weekend, you will also enjoy the unmistakable charm of Spanish culture and cuisine.

Your itinerary:

Day 1: Individual travel to the five-star Claris Hotel Gran Luxe situated in the centre of Barcelona with its exclusive shopping facilities. Surrounded by boulevards and theatres, your holiday experience starts upon arrival at the hotel. In the afternoon, we take a walk down the promenade in the heart of the city to the Restaurant Barceloneta. You then have some time at your disposal before sitting down to some delicious Mediterranean cuisine. Later, a bus will take you back to your hotel.

Day 2: After a generous breakfast, we make the short trip to the Circuit de Catalunya where you are about to experience the incredible sensation of travelling from 0 to 200 km/h in an amazing five seconds. Before you step in the cockpit, you will receive all the necessary protective clothing and equipment as well as a briefing on safety and the basic principles of single-seater driving. You then head out onto the track in a Porsche 911 or Boxster S to familiarize yourself with the circuit and receive some more expert advice. After lunch, the entire afternoon is dedicated to your Formula One experience. After starting and warming up the engine, you exit the pits for your first lap in a

genuine F1 racing car. Throughout your session, telemetry data is beamed back to the garage for evaluation when you return to the pits. Your day at the circuit ends with the presentation of your F1 diploma as well as the obligatory champagne. Afterwards, you return to the hotel by bus before dining nearby at the exclusive La Venta, one of the most celebrated restaurants in Barcelona. The rest of the evening is free to enjoy some of the city's legendary nightlife.

Day 3: The day begins with a leisurely breakfast at the hotel. After checking out, the day is yours to explore Barcelona before your individual departure.

Dates: Oct. 28-31, 2002
Oct 31-Nov 2, 2002

Prices: \$4,884 per person in double room
\$5,166 per person in single room
\$1,409 for one companion not participating

Package includes: Two nights' accommodation with breakfast, lunch (one day), dinner (two days), driver training at the Circuit de Catalunya in a Porsche 911 or Boxster S and F1 single-seater, information pack, Porsche Travel Club tourguide in English. ■

914 Limited



Maintenance, repair, restoration,
track preparation, new and used parts
exclusively for your 914
Brad Mayeur, PCA since 1974
Peoria, IL. 309-694-1797
voldiadv@midwest.net fax:309-698-2203
Pickup and delivery available

R.A. Adams
ENTERPRISES, INC.

- TRAILERS • HITCHES •
- TRUCK EQUIPMENT •
- Full Service / Electrical
- Custom Paint / Graphics
- Full Line of Accessories

2600 W. RTE. 120, MCHENRY, IL
(3/4 MILE EAST OF FOX RIVER)

(815) 385-2600
www.raadams.com

OPEN: MON-FRI 7:00 - 5:30
SATURDAY 7:00 - 1:00

• OVER 400 TRAILERS IN STOCK •
• FINANCING & NATIONWIDE DELIVERY AVAILABLE •
• FAMILY OWNED & OPERATED FOR OVER 45 YEARS! •

midwest

EUROSPORT

Racing



Spahr Graphics!

Service & Race Prep

Street Car Maintenance

Engine Development & Dyno Testing

Suspension Tuning / JRZ Shocks

Transport And Trackside Support

Performance Modifications

Recaro Seating / Fikse Wheels

Motec Fuel Injection & Data Logging

Drack Data Logging

**MIDWEST EUROSPORT INC
104 W Irving Pk Rd
Bensenville, IL. 60106**

Phone 630-595-5577

Fax 630-595-8096

I LOVE A PARADE RALLYE WEEKEND!!

SATURDAY, SEPTEMBER 14TH GIMMICK RALLYE to the Milwaukee area

SUNDAY, SEPTEMBER 15TH I LOVE A PARADE RALLYE

Saturday, September 14th

GIMMICK RALLYE

Start point: The NEW Porsche Exchange
2300 Skokie Valley Road
Highland Park, IL 60035

Map and directions to The NEW Porsche Exchange will be in the August Chicago Scene

Start time: GIMMICK RALLYE GENERAL INSTRUCTIONS and ROUTE INSTRUCTIONS will be available from 11:00 AM until 1:00 PM.

Saturday evening:

Plans are being made for a dinner with the Milwaukee Region PCA - details in the August Chicago Scene

For those wishing to 'make a weekend of it', a block of rooms has been arranged at the Best Western Waukesha Grand in Pewaukee, WI. Please identify yourself as a Chicago PCA member to get the \$70.00 (+ tax) room price. Best Western's number is 262.524.9300

Sunday, September 15th

I LOVE A PARADE RALLYE

Registration Opens: 10:30 AM - place TBA

Drivers Meeting: 11:15 AM - place TBA

1st car off: 12:01 PM - place TBA

Post Rallye Dinner: Time & place TBA

Details in the August Chicago Scene

Mail Registration form to **Susan Shire, 1897 Mission Hills Lane, Northbrook, IL 60062**

847.272.7731
ChiScene@aol.com

_____	_____	Sat eve DINNER	Y	N
Driver	Phone Number			
_____	_____	Sat eve DINNER	Y	N
Navigator	Phone Number			

___ Pre-registration RALLYE WEEKEND PACKAGE	\$ 30.00
___ Pre-registration GIMMICK RALLYE only	\$ 20.00
___ Pre-registration I LOVE A PARADE RALLYE only	\$ 20.00

Make checks payable to PCA Chicago Region

At event registration ADD \$5.00 (each event)

The Chicago Region's TRAC 2002 ...

Road America in Elkhart Lake, WI



Friday, August 30th – Monday, September 2nd

Drivers' Education 10th Annual Club Race Concours Dinner Party

Drivers' Education - Friday, Saturday and Sunday with additional (optional) drive time on Monday. Drive time on Monday may be earned by volunteering three hours during the weekend or purchased for an additional fee.

Club Racers – Friday optional “Test & Tune Day,” Saturday practice and Fun Race, Sunday Sprint Race, and Monday 90 minute Enduro Race.

TRAC 2002 Concours, Dinner and Party - Saturday evening at Siebkens Resort in Elkhart Lake.

The **TRAC 2002 Drivers' Education Registration form** is available in this issue of the Chicago Scene, on June 7th at pca-chicago.org or from the registrar (847.604.4795 or ChiScene@aol.com). The **TRAC 2002 Club Race Registration form** will be available June 7th at pca-chicago.org or from the registrar (847.604.4795 or ChiScene@aol.com). Drivers Education and Club Race registration forms should be returned to the TRAC 2002 Registrar with a postmark date NO EARLIER than July 17th.

Registration confirmations for TRAC 2002 Drivers' Education and Club Racing participants will begin August 1st. Approximately two weeks prior to the event, confirmed drivers will receive an information packet which will include assigned car numbers and run groups, the tentative **TRAC 2002 Schedule**, and a copy of the *Rules of Road America*. Please read the *Rules of Road America* carefully before you arrive at the track to ensure that you and all of your guests and crew are in full compliance. TRAC 2002 Drivers' Education and Club Race participants should note that their cars cannot

exceed the maximum Road America noise restriction level of 108 decibels.

All TRAC 2002 participating drivers and volunteer workers will have their TRAC 2002 Concours registration fee waived and will be the dinner guests of the Chicago Region. Additional dinner tickets for crew and guests may be purchased via your registration form or at the event (track registration building).

There will be 24-hour security at the track Thursday through Sunday nights. Road America will allow participants to camp on the grounds for a fee. Electrical hook-ups will also be available for a fee payable to Road America. Please note that the track gates will close promptly at 7:00 PM on Monday evening and everyone must vacate the property by that time.

Golf cart rentals are available again this year. Reservations must be made at least four weeks in advance of the event via your registration form. Please note that you will be responsible for any damage and a minimum age of 16 years is required to operate the carts.

Additional **TRAC 2002** information is available on the **24-hour Information Hotline at 847.604.4795**. You may also contact any of the Road America committee members between 6:00 PM and 9:00 PM CST.

This is the best PCA event of the year so register early! See you at **TRAC 2002 at Road America!**

*Chris Ingot and Steve Rashbaum,
TRAC 2002 Co-Chairs*



PCA CHICAGO REGION TRAC 2002 Drivers' Education

August 30 - September 2, 2002

Chris Ingot & Steve Rashbaum,
TRAC 2002 Co-Chairs

**REGISTRATIONS POSTMARKED PRIOR
TO JULY 17, 2002 WILL NOT BE ACCEPTED**

REGISTRAR USE ONLY

#1 _____ #2 _____
Group _____ Group _____
_____ # _____

First Driver Name

Address

City State Zip

Eve Phone with AREA CODE Day Phone with AREA CODE

Fax and/or e-mail address

Shirt size: S M L XL XXL XXXL

PCA Member Region _____ N/A

Current PCA Membership # _____

Second Driver Name (must be in same car)

Address

City State Zip

Eve Phone with AREA CODE Day Phone with AREA CODE

Fax and/or e-mail address

Shirt size: S M L XL XXL XXXL

PCA Member Region _____ N/A

Current PCA Membership # _____

Please note that there will be **NO** Novice drivers at this event.

<i>Requested Run Group</i>	<i>Requested Run Group</i>
<Fastest 1 2 3 4 Slowest>	<Fastest 1 2 3 4 Slowest>

To help us better classify car/driver combinations, please specify your driving experience, including number of track days per year, professional driving schools attended, and tracks driven with typical lap times:

Porsche Year/Model _____ Color _____ # of Cylinders _____ Displacement _____

Please list other performance enhancing modifications to help us classify your car: _____

Chicago Region (previously assigned) Permanent Car # _____ Chicago Region (previously assigned) Permanent Car # _____

If none, Requested # _____ If none, Requested # _____

Participating in Saturday Evening TRAC 2002 Concours? (circle) No Yes Class _____ Special Exhibition Class _____

There may be reserved parking spaces set aside for some participants based on size requirements. Please help us by specifying your parking needs for trailers or semis of more than 30'. No other reservations will be honored. For more information please call 847.604.4795.

Please specify how many: Semi _____ Dimensions _____ ft x _____ ft With Group? No Yes

Trailer _____ Dimensions _____ ft x _____ ft Group Name _____

Other (be specific) _____ Dimensions _____ ft x _____ ft Contact _____

Contact e-mail _____ Contact Phone (with Area Code) _____

This is a two-page form. Please complete second page.

DRIVER MEDICAL INFORMATION

For second driver, please photocopy, complete, and submit with pre-registration form

Name _____ Age _____ Birth Date _____

List any medication currently used (including eye drops) _____

Contact lenses? Y N Last tetanus shot date _____ Blood type _____

Allergies (including asthma, hay fever, medications or drugs) _____

List any current Medical Conditions _____

Describe any medical changes since your last physical _____

Physician's Name _____ Phone _____

NOTE: This information is kept confidential and is to be utilized only in the event of a medical emergency.

POLICIES: This registration form must be signed. Your signature below signifies acceptance of these policies.

The PCA Chicago Region reserves the right to deny registration for or attendance at this event or request the removal from this event of any person as it sees fit.

- Incomplete Registration forms will not be accepted and will be returned with no registration place held. Late fees will apply.
- Road America requires that we exit the track by 7:00 pm Monday September 2, 2002.
- The PCA Chicago Region's policy regarding fees incurred and damage caused at the track is that the party or parties responsible will be required to reimburse Road America for any fees or physical damage caused to the track, its facilities, or its equipment including (but not limited to) the clean up and removal of any spilled oil, coolant, brake fluid, discarded tires, or late exit. These are not covered in your registration fee.
- I agree to indemnify and hold harmless the organizers of this event and their agents with respect to the condition and preparation of my car or any subsequent failure or damage to my car or its occupants as a result of such failures. I acknowledge that at all times I remain solely responsible for the safety and roadworthiness of my car.
- I hereby certify that I have no known physical or mental problems which might jeopardize others or myself if I participate in this event.
- I give permission to any hospital, medical institution or physician to furnish any information necessary for treatment regarding my condition.

Signature _____ Date _____

In Case of Emergency, Notify

Name _____ Phone/cell phone/pager _____

Relationship _____ At track? Y N At local hotel? (name) _____

DRIVERS' EDUCATION FEE SCHEDULE EARLY REGISTRATION LATE REGISTRATION

Postmarked by 8/5/02 Postmarked after 8/5/02

First Driver

___ Friday, Saturday & Sunday	\$ 300.00	\$ 325.00
___ Monday	\$ 75 .00	\$ 100.00

Second Driver (family or affiliated PCA member only)

___ Friday, Saturday & Sunday	\$ 150.00	\$ 175.00
___ Monday	\$ 75 .00	\$ 100.00

Second Driver (non-family/non-affiliated PCA member, non-PCA member)

___ Friday, Saturday & Sunday	\$ 300.00	\$ 325.00
___ Monday	\$ 75 .00	\$ 100.00

Driver(s) Fees

Extra shirt(s) S M L XL XXL XXXL	# _____ @ \$ 15.00 EACH	\$ _____
Extra Dinner Tickets	Adult # _____ @ \$ 20.00 EACH	\$ _____
	Child (12 and under) # _____ @ \$ 10.00 EACH	\$ _____
Golf Cart Rental (3 day rental - other options available)	# _____ @ \$ 250.00 EACH	\$ _____

Make checks payable to PCA Chicago Region (No credit cards accepted) TOTAL enclosed \$ _____

Mail pre-registration form and check to:

Susan Shire, TRAC 2002 Registrar
1897 Mission Hills Lane
Northbrook, IL 60062

Phone 847.604.4795

**REGISTRATIONS POSTMARKED PRIOR
TO JULY 17, 2002 WILL
NOT BE ACCEPTED**

UPS, FedEx, etc. USPS Priority Mail will NOT be accepted.

PLACES TO STAY WHILE VISITING ROAD AMERICA

52 Stafford—An Irish Guest House
Plymouth, WI—920.893.0552

The American Club
Kohler, WI – 800.344.2838

AmericInn Motel - Plymouth
Plymouth, WI—920.892.2669

AmericInn Motel/Suites
Sheboygan, WI—920.208.8130

Baymont Inns
Sheboygan, WI—920.457.2321

Best Value Parkway Motel
Sheboygan, WI – 800.341.8000

Breeze Inn to the Chalet Motel
Mequon, WI—414.241.4510

Brownstone Bed & Breakfast
Sheboygan, WI—920.451.0644

Comfort Inn
Sheboygan, WI – 800.228.5150

Grand Hotel
Sheboygan – 920.458.1400

Harbor Winds Hotal
Sheboygan, WI – 920.452.9000

Hillwind Farm B & B
Plymouth, WI – 877.892.2199

Holiday Inn Express
Sheboygan, WI—920.451.8700

Imperial Motel
Sheboygan, WI – 920.458.3578

Inn on Woodlake
Sheboygan, WI – 800.919.3600

Krupp Farm Homestead B&B
New Holstein,
WI—414.782.5421

Lakeland College
Howards Grove,
WI—920.565.1248

The Osthoff
Elkhart Lake,
WI—800.876.3399

Pinehurst Inn
Sheboygan Falls,
WI—920.467.4314

Plymouth Inn
Plymouth, WI—920.893.5623

Ramada Inn Downtown
Sheboygan, WI – 800.909.8770

Riverview Spa Suites
Sheboygan, WI – 920.451.9576

Rochester Inn
Sheboygan Falls, WI –
920.467.3123

Safe Harbor Inn
Fond du Lac, WI –
920.923.0223

Saukville Super 8 Motel
Saukville, WI—414.284.9399

Select Inn Fountain Park
Sheboygan, WI – 800.909.8770

Sheboygan Super 8 Motel
Sheboygan, WI—920.458.8080

Siebkens Resort
Elkhart Lake,
WI—920.876.2600

Sippel House
Elkhart Lake,
WI—920.876.3110

Victorian Village
Elkhart Lake,
WI—920.876.3323

Windy Mare
Kiel, WI—920.894.2284

Wisconsin Aire Motel
Random Lake,
WI—920.994.4501

Yankee Hill Inn B & B
Plymouth, WI—920.892.2222

Campgrounds

Cedar View Camper Rentals
Kiel, WI—920.894.7884

Hoelt's Resort Campground
Cascade, WI—920.626.2221

Plymouth Rock Camping Resort
Plymouth, WI—920.892.4252

Mark & Dean's Camper Rental
Kiel, WI—800.894.7181

Westward Ho Camp Resort
Glenbeulah, WI—920.526.3407

We need your help to make the **TRAC 2002, August 30 – September 2, 2002** the best it can be. Your help in the past has done just that. Please help out again this year. If you are interested, please send your work assignment preferences, name, address, phone, e-mail and/or fax number to:

Keith Clark
733 Medford Drive
Carol Stream, IL 60188

phone: 630.690.3381
fax: 630.690.3394
e-mail: ClarkFNFlying@aol.com

Name: _____

Phone: _____

Address: _____

e-mail: _____

Fax: _____

Tech / Registration / Grid / Anywhere you need me

Thursday pm / Friday am / Friday pm / Saturday am / Saturday pm / Sunday am / Sunday pm / Monday am / Monday pm

WELCOME TO OUR NEW MEMBERS MAY 2002



PETER BARNES
Northbrook, IL
1979 911SC Coupe

TOMMY IORIO
Chicago, IL
1999 Boxster

KEITH ONCHUCK
Darien, IL
1969 911T Coupe

SEAN CASEY
Chicago, IL
2001 Boxster

LAWRENCE A. KERNER
Chicago, IL
1989 911 Cab

TOM O'REILLY
Schaumburg, IL
2001 Boxster S

JOHN G. CIESAR
Orland Park, IL
2002 Carrera Cab

MARTHA KUSHNER
Highland Park, IL
1987 944 Turbo

MICHAEL OSTY
Westchester, IL
2002 Boxster

DON CIVGIN
Northfield, IL
2002 Boxster

GREG LEWIS
Hanover Park, IL
1988 Carrera Coupe

NOEL PALMA
Skokie, IL
1995 911 C2

STEVE DOWDY
Barrington, IL
2002 Boxster S

GREG LONGORIA
Lake Forest, IL
1990 944S2 Coupe

RAY QUICK
Baton Rouge, LA
1987 911

RICHARD GOODMAN
Chicago, IL
2002 C4 Cab

BILL MALONE
Crown Point, IN
1991 911 C2

GITESH RAMAMURTHY
Winnetka, IL
1999 911 C4

RICK GUNDERSON
Bloomington, IL
2000 996 Cab

MICHAEL MECH
Chicago, IL
2002 Boxster

CRAIG SMITH
Long Grove, IL
2002 911 C4S

TIM HARGER
Libertyville, IL
2001 996

AARON MORFORD
Moline, IL
1990 911 C2

LARRY WINDEL
St. Charles, IL
1986 911 Cab

HAROLD HAYES
Chicago, IL
1973 Carrera RS

MICHAEL MEYERS
Waukegan, IL
1988 911 Targa



Fischer Motors, Inc.

SPECIALISTS IN COMPETITION PERFORMANCE SERVICE

- High Performance Engine Work
- Hunter Wheel Alignment
- Race Suspension Tuning & Weight Balancing
- Transmission & Brake Conversions

Besides all sport related upgrades, we are a repair facility for German cars.

PORSCHE MERCEDES BENZ BMW VOLKSWAGEN AUDI

908 S. Northwest Highway (Rte. 14)
Between Lake Cook Roads & Dundee Road
Barrington, Illinois 60010
(847) 304-8822 - 8823

Weekdays 8 AM - 5 PM

Saturday 8 AM - 1 PM

Address Change?

Name (s):

OLD Address:

NEW Address:

Home Phone:

Fax:

Work Phone:

e-mail:

Mail, Fax or E-mail the above information to: Debbie Leed, 37 Lakeview Drive, Barrington, IL 60010-1949 FAX-847-382-3562 (8:00 a.m. until 8:00 p.m. only), leedlast@hotmail.com

PCA Chicago Region 2002 Tech Inspection Sheet

NAME: _____ CAR COLOR: _____ RUN CLASS: _____
 MODEL/YEAR: _____ ENG. DISP.: _____ CAR #: _____

Pass Fail

!!! TO BE INSPECTED BY ENTRANT PRIOR TO EVENT !!!

Note Driver/Run Classes: Slower, less experienced driver is Novice Class N, progressing to C, B2, to B1 to A, with A Class the most experienced and faster.

INSIDE

MUST

ENGINE

1. HELMET, SNELL SA 95 or later required for all Track Events including Blackhawk, Road America, and GingerMan. (Snell SA sticker must be attached inside.)
- 1A. HELMET, SNELL SA or M 90 or later required for all Autocross events (Snell SA or M sticker must be attached inside.) **Helmet Requirements!**
2. APPAREL - Full-length pants, long sleeved cotton shirts, cotton socks and full coverage shoes are mandatory. Highly recommended, but not mandatory, are drivers' suits, driving gloves and shoes all made of Nomex or similar fire-resistant materials. Arm restraints required for All Open Cars.
3. SEAT BELTS - Original factory installed belts for N, C & B2 Class. Required for all other Classes (and all B class at Road America): Stock Seats must have 6-point, "H" Harnesses without Harness Bar & no "H" with Bar or Race Seat must have 5/6-Point. All securely anchored, metal-to-metal, with large diameter washers on both sides of floor mounting holes. Tunnel side belt mounting only on factory seats. Harness and seats must be equipped the "same" for driver and passenger side (Instructor).
4. FIRE EXTINGUISHER - Recommended but not required. Securely anchored metal-to-metal in reach of driver. BC or ABC rated and fully charged. AFFF or Halon recommended.
5. ROLL PROTECTION – Roll Bar, Cage or Extender using "broomstick rule" required for all A Class. The same Roll Protection is highly recommended although not required for other classes. Any open car (no roof) must run A Class rules. Cabs must have roof in up position and sunroofs must be closed.
6. PEDALS - Free return and in good operating condition. Firm brake pedal.
7. LOOSE OBJECTS - Remove all loose items from trunk and interior, including glove compartment, door pockets, console, mats, etc. Glove box locked. Spare secured or removed (spare adds to structure to certain Porsches).
8. AIR BAG EQUIPPED CARS – No obstructions in front of air bag(s).
9. WINDSHIELD - No major cracks and functional wipers with good blades.
10. MIRRORS - At least one side (two highly recommended) and one securely mounted rear view mirror.
11. GAS CAP - Gasket intact and cap tightened.
12. RUST - No rust or damage to suspension or chassis parts that affect the integrity of the chassis or brakes.
13. FRONT SUSPENSION - No excessive looseness in steering or suspension. Lower trailing arm to radius tight; axle and shock bolt tight. Ball joints in good condition. Tie rods secure. Axle boots and oil seals in good condition. **Warning: 944/968 MUST Check Ball Joint & Control Arms for cracks and binding caused by excessive lowering, larger sway bars and track usage.**
14. REAR SUSPENSION - No excessive looseness. Check half shaft bolts and shock bolts. 914's check fuel pump and lines. No positive camber on any car.
15. WHEEL BEARINGS - Correct adjustment, check for play and proper lubrication, no damaged or burnt bearings.
16. BRAKES - Sufficient brake linings or pads. No rubbing, cuts or abrasions in brake lines. Check rotor condition. Brake pad thickness must be checked periodically for 2mm minimum thickness throughout the high-speed events. Make sure you start with ample brake pad material and/or bring an extra set of pads. It is recommended you start with fresh competition pads properly bedded in.
17. WHEELS - No cracks. No bends. All lug nuts must have 94 - 96 lbs. torque. Valve stem must have airtight cap. Hubcaps and center caps must be removed.
18. TIRES - In good condition. No cracks or bulges. ZR or better required (HR for Autocross only). Minimum tread depth of 3/32" on contact patch area (race tires or shaved performance tires must have as least 1/16" tread wear marker depth and no cord showing). Seek an experienced driver with like car/tires for hot/cold tire pressure.
18. BRAKE FLUID - Level up, must show in reservoir. All cars must have their brake systems flushed with DOT 4 specification or better brake fluid 90 days or less preceding the high-speed event. If another high-speed event is run less than 90 days prior to this event, then the fluid must be flushed again before running.
20. BATTERY (IES) - Securely fastened and in good condition. No acid leaks or corrosion. Check fuel lines under battery trays on 914's. The Positive (+) Terminal on all batteries must be covered by cap or tape.
21. ENGINE - Check for odd sounds and satisfactory exhaust (remember 108db limit at Road America).
22. DRIVE BELTS - Tight and in good condition.
23. LEAKS - No exhaust leaks and leaks of any fluid - oil, gas, brake, or coolant.
24. THROTTLE RETURN - Freely operating and good springs. Check both throttle return springs on CIS cars.
25. BRAKE LIGHTS – All bulbs on both sides and center brake light (if so equipped) must be functional.

In consideration of my participation in this event, I have checked the above items and certify that they meet or exceed the requirements. I agree to indemnify and hold harmless the organizers of the event, or their agents, with respect to responsibility for the condition and preparation of my car, or any subsequent mechanical failures or resulting damage to my car or its occupants as a result of any such failures. I acknowledge that at all times, I remain solely responsible for the safety and roadworthiness of my car. I hereby certify that I have no physical or mental problems, which could jeopardize any others or myself if I participate in this event.

ALL OF THE ITEMS ON THIS TECH SHEET HAVE BEEN TESTED AND SERVICED AS DESCRIBED. THE TECH INSPECTOR'S SIGNATURE BELOW DOES NOT IMPLY COMPLIANCE WITH THE ABOVE AND IS ONLY AS WITNESS TO THE DRIVER'S SIGNATURE, WHICH WARRANTS COMPLIANCE.

DRIVER'S SIGNATURE: _____ DATE: _____

WITNESS TO DRIVER'S SIGNATURE (inspector): _____ SERVICE STAMP: _____ DATE: _____

Revised 2/12 2002

PCA - CHICAGO REGION BOARD MEETING MINUTES

May, 2002

Voting Members Present: K. Clark, J. Jacisin, M. Nowakowski, K. Pesavento, E. Barnicle, P. Hackenson, P. Yanahan, C. Inglot, S. Young

Coordinators Present: P. Hackenson, T. Conforti, K. Clark, J. Jacisin, P. Yanahan, J. Stephensen, S. Adleman, D. Gallagher, J. Girard

Members Present: M. Haas, A. Haas, B. Soske

Meeting Called to Order by K. Clark at 8:03 PM at the Park Ridge VFW Hall, Park Ridge, IL.

Secretary: M. Nowakowski
Presented minutes from April 5, 2002, Board Meeting.
Approved: Unanimously.

Treasurer: K. Pesavento
Presented Chicago Region Financial Statement dated 5/01/02. Approved: Unanimously

President: K. Clark
K. Clark presented PCA National rebate check to K. Pesavento.
PCA National has been contacted regarding change in Membership Coordinator and is comfortable with our handling of the membership.

Autocross: S. Young/M. Gallagher
Presented by S. Young. Autocross Driver's School on April 28 was successful with 82 drivers present. Thanks to all who helped and attended, especially E. Barnicle. MGA site for Autocross I is prepared.

Road America: C. Inglot
Memorial Weekend Drivers' ED event currently has 204 pre-registered participants. Shirts will be ordered by May 6. Insurance documents for this event need to be forwarded. Skip Barber will be providing the instruction for the novice day.
Labor Day Weekend schedule has been approved by National Club Race Stuart. General discussion on increasing volunteerism during events.

Blackhawk Farms: D. Gallagher/P. Hackenson
Presented by D. Gallagher. Currently, the May 15 Novice Event has 40 drivers pre-registered, and 28 instructors. Presented by P. Hackenson. Currently, the May 8 Event has 69 pre-registered participants.

Gingerman: J. Girard
Gingerman July 20 and 21 rates will be the same as 2001

event. Dinner at the track will be included in the driver fee for Saturday evening. Ambulance services are secured. Registration for the event has begun.

Insurance: K. Clark
Blackhawk insurance certificate for the May 15 event has been received. May 8 event insurance certificate will be issued May 6. Insurance information has been forwarded to Blackhawk. Road America insurance certificate for Memorial Weekend event has been received.

Concours: J. Jacisin/P. Yanahan
Presented by J. Jacisin. Escort for Labor Day Concours event at Road America has been secured with Elkhart Lake Police Department.

Rallye: J. Stephensen
Presented by D. Gallagher. The Gimmick Rallye had 11 vehicles participating. Turnout was low due to poor weather.
Presented by J. Stephensen. Extended thanks to D. and P. Gallagher for hosting the Gimmick Rallye.
Rallye School was a success and well attended. Thanks were extended to S. Rashbaum, S. Shire, and L. Lichtenstein.
September 14 & 15 Rallye will be in conjunction with the Milwaukee Region, and will begin at The Porsche Exchange.
Presented by M. and A. Haas. 1st Rallye was a success with 20 cars registered, and 19 finishing.

Membership: V. Miller
Presented by M. Nowakowski. Membership processing is current as of April.

Goodie Store: K. Hackenson
Goodie Store merchandise will be for sale at Blackhawk and Road America events.

Chicago Scene: S. Adleman
Presentation by J. Jacisin. Options and alternate methods of printing and technology for Scene were presented.
Option A: Offset printing on uncoated stock. Benefits include sharper photos and cleaner overall appearance. Midrange cost for printing with this option.
Option B: Offset printing on coated stock. Benefits include magazine look and feel with enhanced quality. Most expensive cost per print.
Option C: Toner based printing on uncoated stock. Benefits include less cost per print, but with reduced resolution and quality.
General discussion on types of printing, quality and cost

Road America Challenge @ Siebkens Resort

CONCOURS **FOUR**

Concours Four **Saturday August 31** @ the famous Siebkens Resort In Elkhart Lake Wisconsin. Begin your Labor Day & TRAC 2002 Weekend Saturday evening with the biggest party of the year ... **the TRAC 2002 Concours** to be held streetside @ Siebkens Resort in Elkhart Lake Wisconsin.

3:00 pm: Concours Cars may begin parking on the street outside Siebkens Resort.

3:30 pm: Judging begins streetside for Non Race Cars.

5:45 pm: Race Cars are police escorted from Road America into Elkhart Lake.

6:00 pm: Judging begins streetside for Race Cars

7:00 pm: Trophy presentations

9:00 pm: Race Cars police escorted back to Road America.

Class A: Exterior, Interior, Trunk, Engine & Undercarriage

Class B: Exterior, Interior, Trunk & Engine

Class C: Exterior, Interior & Trunk

Class D: Exterior & Interior

Class E: Exhibition Style of Exterior & Interior. Visual Inspection Only

Novice: For fun & first time participants only. Judged to Class C standards

RaceCar Exhibition: Class for all participating PCA Club Race & Drivers Ed Race Cars. No entry fee required.

Questions? Call Cindy Jacisin @ 708.562.6353 before 9 pm please.

Concours Fee \$20 per car Please make checks payable to: **PCA Chicago Region.**

c/o Cindy Jacisin 10813 Hastings, Westchester IL 60154

Club Racers & Drivers Ed participants are FREE

Name _____

Address _____

City _____ State _____ Zip _____

Phone () _____ email _____

PORSCHE Model _____ **Body Style** _____ **Year** _____

Class A _____ B _____ C _____ D _____ E _____ **Novice** _____ **Exhibition** _____



per issue of Scene.

Motion by J. Jacisin for Board Members to vote on presented options for printing of Scene.

Results of vote:

Option A: Clark, Jacisin, Pesavento, Nowakowski, Yanahan, Hackenson, Barnicle, Inglot

Option B: Young

Motion by J. Jacisin to utilize Option A for Scene printing, limit overrun to 3%, and continue to utilize PressTech as vendor. Second: P. Yanahan. Approved: Unanimously.

Thanks were extended to J. Jacisin for his work on the Chicago Scene options and layout.

Presented by S. Adleman. Discussion regarding advertisement in Scene for Drivers' ED events held by other regions.

Scene will include a description on events of other Regions. Website will include information and a link to event registrar.

Advertising: S. Shire

Presented by K. Clark. S. Shire has resigned as Advertising coordinator. She will complete the billing cycle.

Sponsorship: S. Raushbaum

Presented by C. Inglot. Advertisers are being contacted for Labor Day TRAC Event. Region will offer the addition of a pop-up advertisement on the Chicago Region website.

Webmaster: J. Holler

Presented by K. Pesavento. Chicago Region has been approved for credit card payment. Information will be forwarded to J. Holler for inclusion on the website.

Old Business:

Presented by E. Barnicle. Requested changes to the Chicago Region Bylaws will be presented for a General Membership Vote. Bylaw Committee will present information. K. Clark indicated that information must be presented by June Board Meeting. E. Barnicle will coordinate the publishing of Bylaw changes in the Scene.

New Business:

D. Gallagher presented updated information in regards to Blackhawk Oktoberfest. Planning for the 3-day event to include an Autocross and Concours.

E. Barnicle suggested that mandatory 30-day advance pre-registration for this event, in order to assist in arrangement for Saturday evening dinner, and to assist with Autocross planning. Discussion on fee schedule to encourage participation in all aspects of event. Directors and coordinators will meet in future to discuss logistics.

No Report From:

Vice President: J. Jacisin

Timing & Scoring: C. Bittman

Chief Driving Instructor: J. Ruther

Social: S. Shire

Safety: T. Conforti

Charity: D. Coup

Technical: P. Hackenson

Photographer: M. Rende

Property: E. Leed

Historian: J. O'Keefe

Motion to Adjourn: Approved Unanimously

Adjournment: 10:22 pm ■

HELP WANTED

WEBMASTER FOR
PCA-CHICAGO.ORG

WEBMASTER will MAINTAIN THE WEBSITE
WITH THE LATEST HAPPENINGS
of the club.

EXPERIENCE WITH HTML A PLUS.

TECHNICAL ASSISTANCE will BE AVAILABLE.
TRAINING will BE PROVIDED if NEEDED.

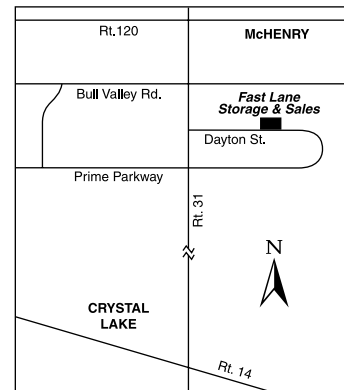
This is A VOLUNTEER position.

CONTACT JOE AT
WEBMASTER@PCA-CHICAGO.ORG

FAST LANE

 CAR STORAGE & SALES
 4004 DAYTON ST., MCHENRY, IL 60050

30,000 Square Feet of Year-Round **INSIDE** Storage



FAST LANE features these Benefits:

- Modern Construction - Quality Built Industrial Building
- In-Town McHenry Location
- Fully Heated - Security System - Sprinkler System
- Pick Up and Drop Off by Appointment

Call for Reservations

Keith Wagner or Mike Bergen

815-385-9480 (days) or 815-459-8330 (evenings)

\$75.00/mo.
for Motorcycles

\$150.00/mo.
for Cars

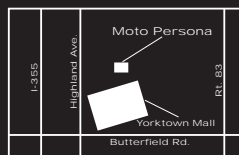
MOTO PERSONA



For Car...

...And Driver

MOTO PERSONA
 42 Yorktown Center
 Lombard, Illinois
 630.627.6686



Monday - Thursday 10am-9pm
 Friday - Saturday 10am-6pm

www.motopersona.com

The Mart

PCA members are welcome to place ads of a non-commercial nature at no charge in The Mart. For non-members, the non-refundable fee for this service is \$15.00 for three months, with checks payable to PCA Chicago Region. Ad material must be received by the 1st of the month for publication in the next month's issue. Publication is subject to space availability and editing. Ads to be placed after the initial three month period must be resubmitted. Please limit ads to 75 words or less.

Please see page one for submission information.

For Sale Porsche Cars

356

1965 356SC Dolphin Grey/Black. Restoration and new paint Disc Brakes. Always garaged. No Smoke, snow, rain. No Rust. Maintained by Fisher Motors. \$28,000 Carl Cucco 847-221-4701 Ccucco@womancarepc.com. [JAS]

911/912

2000 911 Carrera Coupe 7300 miles, Biarritz white/Metropolitan blue, 6 speed, full leather, hi-fi sound pkg, PSM, K40 radar, 18 inch turbo wheels, gold Porsche wheel crests, full power seats, 6 CD changer, single play in dash CD, Porsche cover. No smoke, rain or track. Elegant! Full factory warranty. \$62,999. Email or call me for color pics! Doug (708) 494-3684 doug@dougwakeley.com. [JAS]

2000 911 Carrera Coupe 5,000 miles. 6 speed. Ocean Blue w/Graphite Gray interior. Heated front seats, power seats, 18" turbo wheels, 3-spoke leather steering wheel, head light washers, hi-fi sound w/speakers, AM/FM Radio w/CD, Litronic headlights, carbon brake/shifter, aluminum dials, chrome exhaust pkg. \$65,500. Grace Wei-Maguire 312-335-9496 or gracweimaguire@ameritech.net. [MJJ]

1997 911 C4S (993 4WD widebody) coupe, red/black leather, 6speed, 35K miles, exceptional condition(needs nothing), records avail, extended bumper-to-bumper warrantee til 9/2002. Options: hi-fi system, in-dash CD, motorsound, stainless exhaust, full power driver's seat, rear wiper, lowered with Eibach springs. \$59,500 Tony Neczet 847-722-4808 tnczet@earthlink.net. [JJA]

1996 911 Coupe. Adventurine Green/Tan

Leather. Sunroof, CD, dual power seats. Garage kept, never driven in snow. Immaculate condition inside and out. 30,000 miles. \$46,000 obo. Call Nick at (312) 551-4086 or e-mail for more info to carsforsale01@yahoo.com. [MJJ]

1995 993 Carrera 2 coupe, Metallic Midnight Blue w/ grey leather interior. 17" XD4 alloy wheels, short shift 6-speed, limited diff, AC, ABD, premium stereo with CD stacker, electric seats, sunroof, dual air bags, aero-wing, 43,000 miles, garaged-no winters, excellent condition. \$44,000. Call Bill 847-937-7080 (day) or 847-283-9262 (evening) or taleri@attbi.com. [JJA]

1994 911 Turbo 3.6, 38,500 miles, excellent condition, upgraded sound system, 6 CD changer. 18" wheels, new Bridgestone tires, 345 horsepower, 2nd owner. \$52,000. John at 847-398-2925. [MJJ]

1992 911 Carrera 2 Cabriolet. 58,000 miles; black w/black top and grey leather. 100% Porsche original except BBS wheels and upgraded Blaupunkt in-dash AM/FM/CD w/extra deep bass speakers. Stored in winters; ready for summer. Superb condition. \$29,500 Contact: Ken Martin in Ogden Dunes, NW Indiana at 219-764-7526 or martinken@att.net. [JAS]

1990 Porsche 911 C4 coupe, 107,000 mi, Black/black, 5-spd, sunroof, New am/fm cd plus new speakers, 17" 993 cup wheel with all new tires, Motor resealed/rebuilt at 90000 miles at Lynch Porsche-\$8000, Has distributor belt update, Recent work done: tie rod, 4-wheel alignment, new fan motor, new oil cooler, new front and rear oil lines, complete brake job-4 new rotors, sensors, pads, top it off with brake fluid change, and new rear decklid struts Have receipts, Runs excellent and driven regularly. Asking \$19,000 OBO Price to sell. Buying 993, Henry 630-963-3420. [JJA]

1990 911 Carrera 2 Targa, Marine Blue metallic/lt gray. 5 speed. Design 90 wheels. Lowered with factory (euro) springs. New Bridgestones. Clarion CD player. 89,000 miles. Updated flywheel. Custom fit cover. Tinted windows. Car spent most of its life in Arizona. No winter driving in IL. \$28,000. Paul Weiss (847) 466-7006. [JJA]

1988 Carrera Coupe Black w/maroon leather interior, Sunroof, Kenwood CD, ADS, AMP, very clean driver, 97K miles. \$19,000 obo. Rick Cantore 630-986-8563, e-mail rick911S@aol.com. [JAS]

1985 Carrera Targa. Dark Blue W/Polished 16" Fuch's Tan, Full Leather Interior, Tail, Alpine Am/Fm 6 Cd Changer, H-4's, Ac.

Maintenance History Since 94, Stored Winters. Excellent Condition, 105k \$18,500 Kent Lutes, Roscoe, IL. 815-623-2977 Klutes@Worldnet.Att.Net [JJA]

1983 911SC Targa Ruby red metallic, beige interior. Original owner, purchased 11/15/82. All records, all references, always garaged. No winters, no rust, no racing, no smoking. Kenwood radio and CD player. New clutch 1995. Needs only tires, perhaps new driver's seat surface. \$15,000. Jim Russell, 195 Maple Hill Road, Glencoe, IL 60022, 312/558-6084, jrusell@winston.com. [JJA]

1972 911 (S) Excellent condition with lots of upgrades for Divers Ed, Club Race, Vintage - street legal. Yellow, no rust. S spoiler, splitter, turbo and duck tails. Details available fax or email. Asking \$17,000. Ed Duffy, 630-404-0422; eduffy@durrant.com. [JJA]

1971 PORSCHE 911 White/Black complete restoration two years ago. 260 HP, roll bar, Momo wheel, R.S.America interior, cruise, CD. gorgeous! \$18,800 Call Dan at 616-253-2017. Two free evening track days (Wed. or Thurs. 5:30 p.m. till dark) at Gingerman with purchase. [AMJ]

1970 911 Targa, 39,000miles, \$15,000. All original, garaged. Lake Geneva area Charles Ekstrom 262-275-5382 .[JAS]

1968 911 Coupe. Beige/Black. 5-speed. #11835735 eng. #3281536. Original, straight, documented. No rust, no snow, rare rain. Records including Window sticker, original Bill of Sale. Third owner. VA car. Webers, factory w/d steering wheel, Blaupunkt AM/FM/SW. original mats plus Porsche carpet set, owner's manual, tool kit, SS exchangers, cover, bra. Under 68,000 miles. \$16,000. Frank Kruesi, 773/588-3828. kruesi@aol.com. [JAS]

1966 Porsche 912 PRICE REDUCED to \$3000.00. This is a very original car, good body with recent repaint. I cannot spend the time to work on this car and would like to pass it on. Call me in South Holland 708-331-2340 or Cell 708-334-7322 I could send pictures if I could download them. [JJA]

968/944/928

1991 944 S2 Cabriolet - Guards red/black leather with black top, 5 speed, power seats, new tires, very well maintained. Only 53,000 miles. \$20,600 Bob Grabowski 630-734-0818. [JJA]

The Mart, continued on page 42

1987 944 Turbo guards red, 60K miles, very good condition, Brembo brakes, adjustable shocks, full roll cage, 2 recaro seats, Fiske wheels 8-1/2 x 9-1/2, HD springs, lowered. Original seats & extra tires & wheels. \$17,500. Call Bob 847-680-0136 or 847-362-1560 x114. [JJA]

1987 944 S Good running car, black metallic, red interior in good condition. Has firm Koni shocks added to the S type suspension, and has limited slip. The "S" is the first upgrade to the 944 line and is DOHC 2.5 L engine at about 190 HP and has 89000 smooth miles. Dish pan alloy wheels with good Firestone ZR50 tires. C2 rims and spare tires available. Not a garage or concours queen but looks good. Call for details and discussions. Mike R. 312-287-2873 days, 708-957-3944 eve. [JJA]

Boxster

2000 Boxster S Ocean Blue/Metropol Blue, 13,866 miles, excellent condition. Stock with litronic headlights, heated seats, traction control, and sports package (digital stereo, cruise control, wind screen, and in dash CD). Tourist Delivery vehicle picked up from the factory on May 31, 2000. \$49,000. Anthony Janairo: 312.458.4478 (days), 773.227.4645 (weekends), or ajanairo@aol.com. [JAS]

Others/Parts

1998 Mercedes E320 Silver w/ Blue Interior, Sunroof, Xenon Head Lights, Rain Sensing Wipers, CD Changer, Heated Seats, Dual Zone Climate Control, 3 Position Seat Memory. One Owner, Euro-Del. Car. Top Condition. 40K miles, \$30,500, Scott 847-390-8666 Days, 847-696-1477 eve. [JJA]

1995 BMW 530i. Orient Blue/Gray Leather. Heated seats, traction control, sunroof, cassette, full leather interior, 5 speed V8. Original owner, car garaged since new, very clean throughout. Recent tires and clutch. 65,000 miles. Great everyday driver! \$14,900 obo. Call Nick at (312) 551-4086 or e-mail for more info to carsforsale01@yahoo.com. [MJJ]

1989 Mercedes Benz 300CE. Rare!! Mint condition!! 2 door, sunroof, black w/black interior, 58K miles, Schrick cam, Jacobs ignition, K&N, jet perf. chip, Remus sport exhaust, 230 HP. Stored winters, weekend car, all receipts. \$14,000 OBO. Call 630-834-8646, JVC6704@aol.com. [JJA]

1987 Corvette, Flame Red Metallic . TPI , Auto, 100% original Every option, driver & passenger 8 way power seats, Bose, remov-

able glass top. Last owner of 3 years , a GM Mechanic. Meticulously cared for. Have every shop recite from 1987. . Have GM shop manuals. Comes with car cover. Asking \$ 9200.00. call after 5 pm. 630-963-7036. [JJA]

1967 BMW 2002 2 liter, roll bar, black Recaro seats. This car is a lot of fun on the track. \$4,500. Call Dan at 616-253-2017. Two free evening track days (Wed. or Thurs. 5:30 p.m. till dark) at Gingerman with purchase. [AMJ]

Trailer + other stuff - 16' 1995 Pace Shadow car hauler, twin axle, carpeted, aluminum wheels, electric brakes, winch, workbench. Used for 1969 911 \$2,99500 O.B.O. Also (4) P225/55ZR15 R3503 Hoosier Tires. (2) New (2)-10 laps at RA- \$400.00 buyer pays shipping. 2-1985 911 Seats - saddle color, cloth centers excellent condition - \$350.00 Pair. Call George at 708-422-5212. [JAS]

Boxster Hard Top garage hoist: This is the good "StowAway" hoist w/cover. \$415 new and this one is 'like new' for \$225 or best offer along w/a drive up to Madison WI to pick up or will ship at cost. Call or Email Gregg Tipple 608-221-3457 days. [MJJ]

Brey-Krause Fire Extinguisher Mount - For 944, 911(1974 and later) with electric seats. In great condition \$50.00 o.b.o., does not include shipping. Please call 312-808-1443 [JJA]

C2/C4 Bolt-in Roll bar - Dougherty SportSystem bolt in roll bar, black powder coat. Not used \$700.00 o.b.o., does not include shipping. Please call 312-808-1443. [JJA]

Roll Bar / Harness Bar - A bolt in roll bar for 993 includes horizontal for shoulder belts. Easy installation, no destruction of interior. Great for drivers ed. Newly painted silver metallic. HIEGO Autotechnik model 516.038. \$400.00 firm. Michael Steele 630/232-6152 or alexs@inil.com . [JJA]

Wheels/tires 2-6x15 and 2 7x15 with new BFG 205/55zr15 and 225/50zr15, wheels are full polish with center caps in good condition, \$800 firm, Larry Allison, days 217-935-8871, evenings 217-935-6540. [JJA]

Seats for a 1986-88 911 or 944. Stock black (non-sport) front seats. Very good condition. No tears. Power drivers seat and manual passenger. \$400.00 OBO. Call Rick at 847-384-1197 after 6 p.m. [MJJ]

Seats - Blk. non-sport partial leather seats from 87 Carrera. Driver 4-way power, pass. no power. No seat belt receptacles included, slider rails are included. VGC, no splits or tears in coverings or stitching, no fading/deep black color. You will not be disappointed (better than my 6 yr. newer RS Americas). \$800 OBO for pair, will NOT separate. Kevin- Tinley Park, 708-532-6294, ktlspider@yahoo.com. Pictures available. [MJJ]

Wheels and tires - Kinesis K-5 forged wheels to fit any 930 or turbo-look 911, fronts 17"x 9" with 245/40 BFG R1's and rears 17"x 11" with 315/35 BFG R1's. Tread life remaining on front tires 60% and 95% on rear. (Brand new wheels alone \$2,900.) Asking \$2,200. Bob Grabowski (630) 734-0818. [MJJ] ■

Midship Report - continued from page 13

instructions that tell you these brackets might need some adjustment. Considerable time was spent looking at the spinlocks and wondering if I put them in wrong. Eventually, I sorted it out (a little bending and twisting of the brackets), and they do change the look of the car in a big way. Something else I sorted out: putting the Speedster Bumps on the car takes a certain level of commitment. I say 'commitment' because once you've put them there, you'll probably want to leave them there. Obviously, you cannot raise the top with them installed. No big deal, you say; pop them off and raise the top. Ok, but now what do you do with the Speedster Bumps? Front trunk? Forget it. They stand too tall to close the lid. Back trunk? Sure, as long as you have nothing else in there and plan to put nothing else in—they swallow up every inch of the trunk and stand high enough that I was almost afraid to press the trunk lid closed. But, they do look cool.

I'll provide an update on acquiring these, as there are several 'aftermarket' vendors peddling copies of the Speedster Bumps. I haven't seen any of them first hand, but have read several reports that the finish on them is not first rate and since their method of attachment varies from the factory version, they have a tendency to rattle. ■



BOXSTERS • 911s • CARRERAS • TURBOS • TARGAS



Great Selection of New and Pre-driven Porsches
Courteous, Knowledgeable Sales Professionals
Factory Trained and Certified Service Technicians
Extensive Porsche Parts Inventory

Lynch Porsche is under new management.

**Contact Marty Johnson
(773)777-2000**



Lynch
Porsche

5201 W. Irving Park Rd. Chicago, IL 60641

www.golynch.com

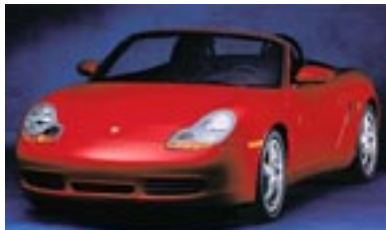
Storeroom Hours Mon - Thurs 9AM - 8PM,
Fri - Sat 9AM - 6PM

Visit Us on the Web at: **www.LynchPorsche.com**

THE ✦ EXCHANGE

A Division of Semersky Enterprises

The Midwest's Largest Volume Porsche Dealer
Including The Largest Selection of New & Pre-Owned Vehicles
Over 23 Years of Experience Serving Chicagoland Porsche Owners



Boxster



PORSCHE



Cayenne



PORSCHE



911 Targa



PORSCHE



Carrera 4S

THE ✦ EXCHANGE

A Division of Semersky Enterprises

2300 Skokie Valley Rd.
Highland Park

(847) 266-7000 www.porschexchange.com

Monday-Thursday 9a-8p Friday 9a-6p Saturday 9a-5p

TECH QUIZ - TEST YOUR KNOWLEDGE

by MARY ANNE NOWAKOWSKI



1. PCA Chicago Region Track Events require the following helmet:

- A. SA 95 or later C. M 90 or later
- B. M 95 or later D. Helmets are not required

2. Before you arrive for Tech Inspection, you should:

- A. Make certain all brake lights are functional
- B. Remove all articles from vehicle
- C. Have your helmet with you
- D. All of the above

3. The minimum tread depth required for your street tires to pass Tech Inspection is:

- A. 1" C. 3/32"
- B. 7/8" D. 1/16"

4. The minimum tread wear marker depth for race tires or shaved performance tires required to pass Tech Inspection is:

- A. 1" C. 3/32"
- B. 7/8" D. 1/16"

5. Recommended torque value for lug nuts on most street Porsches is?

- A. 60-65 lbs. C. 86-90 lbs.
- B. 72-75 lbs. D. 94-96 lbs

6. Which type of fire extinguisher is highly recommended equipment for track vehicles?

- A. Water C. Purple K
- B. Halon D. Foam

7. Minimum thickness for brake pads throughout high-speed events is?

- A. 40 mm C. 6 mm
- B. 10 mm D. 2 mm

8. It is recommended that vehicles have their brake systems flushed with DOT 4 brake fluid:

- A. Within 6 months of a high-speed event
- B. Within 90 days of a high-speed event
- C. Within 1 week before a high-speed event
- D. The night prior to a high-speed event

9. The following is true:

- A. Original factory installed belts and seats are required for N, C & B2 Classes.
- B. Six point restraints with stock seats are required for classes higher than B2.
- C. Race seat and five or six point required for all classes higher than B2.
- D. All of the above.

1. A - SA 95 or later	2. D - All of the above
3. C - 3/32"	4. D - 1/16"
5. D - 94-96 lbs.	6. B - Halon
7. D - 2 mm	8. B - Within 90 days of event
9. D - All of the above	

2002 Board of Directors



President
Keith Clark
630-690-3381 w
630-690-3394 f
ClarkFNFlying@aol.com



Vice President
Jim Jacisin
630-279-4835 h
630-665-3491 f
james@design-dept.com



Secretary
Mary Anne Nowakowski
847-929-1831 w
847-470-1204 f
nowakowskim@permapipe.com



Treasurer
Ken Pesavento
630-469-1546 v
kenneth_a_pesavento
@ml.com



Past President
Ed Barnicle
630-323-2963 w
630-323-5334 f
Edbarnicl@aol.com



Director
Pete Hackenson
630-655-1629 h
630-655-4841 f
phackenson@hotmail.com



Director
Chris Inglot
847-559-1126
773-286-4811 f
Cinglot@aol.com



Director
Pat Yanahan
630-887-7605
630-920-1935 f
pyanahan@attbi.com.



Director
Shawn Young
630-205-0055 c
630-758-1108 f
shawn@us-aapex.com



Director
Chuck Bittman
708-352-9505 h
708-354-9505 f
cbittman@bellebotanicals.com

2002 Coordinators

- Advertising:** Susan Shire, 847-272-7764, 847-272-7785 fax, ChiScene@aol.com & Pat Yanahan
- Autocross:** Mike Gallagher, 773-929-8108 v/f, 312-919-8108 c, foggy@21stcentury.net & Shawn Young
- Autocross:** Shawn Young, 630-205.0055, 630-758-1108 fax, shawn@us-aapex.com
- Archive Historian:** John O'Keefe, 708-344-0911, 708-344-0911 fax jdok911@aol.com
- Charity:** Doug Coup, 847-429-0794, 847-429-0912 fax, douglascoup@msn.com
- Chicago Scene:** Scott Adleman, 847-390-8666, 847-390-8885 fax, saa@preres.com
- Chief Driving Instructor:** John Ruther, 847-639-1094, john@northstarmotorsports.com
- Concours:** Jim Jacisin, 630-279-4835 h, james@design-dept.com & Pat Yanahan
- DE – Blackhawk:** Dan Gallagher, 708-784-0784, 708-784-0785 fax, Bbabies@aol.com & Pete Hackenson
- DE – Gingerman:** Jeff Girard, 630-985-6739, 630-985-6739 fax
- DE – Road America:** Chris Inglot, 847-559-1126, 847-559-1127 fax, Cinglot@aol.com
- DE – Tech:** Pete Hackenson, 630-655-1629, 630-655-4841 fax, phackenson@hotmail.com
- Database:** Debbie Leed, 847-382-6911, 847-382-3562 fax, leedlast@hotmail.com
- Goodie Store:** Karen Hackenson, 630-655-1629, 630-655-4841 fax, phackenson@hotmail.com
- Insurance:** Keith Clark, 630-690-3381, 630-690-3394 fax, ClarkFNFlying@aol.com
- Membership:** Van Miller, 847-949-0972, Quik550@aol.com
- Novice Driving Instructor:** Ed Leed, 847-382-6911, 847-382-3562 fax, leedlast@hotmail.com
- Photographer:** Mike Rende, 708-957-3944 h, 312-469-3425 w, fasttalkii@aol.com
- Property:** Ed Leed, 847-382-6911, 847-382-3562 fax, leedlast@hotmail.com
- Publicity:** Susan Shire, 847-674-2285, 847-679-8973 fax, chiscene@aol.com
- Race Tech:** Todd Conforti, 847-952-0070, 847-952-1261 fax, TlControls@aol.com
- Rallye:** Jack Stephensen, 708-865-1465, 847-541-6171 fax, Jstephensen@aol.com
- Safety:** Todd Conforti, 847-382-9653, TiControls@aol.com
- Social:** Susan Shire, 847-674-2285, 847-679-8973 fax, chiScene@aol.com
- TRAC 2001 Race:** Chris Inglot, 847-559-1126, 847-559-1127 fax, Cinglot@aol.com
- Webmaster:** Joe Holler, 847-287-1799, webmaster@pca-chicago.org

Why Would You Ever Consider A Luxurious PreOwned Vehicle From
Napleton Porsche in Westmont?

The Answer Is Quite Simple...



***It's All About
Selection.***

***The Midwest's Largest Exclusive Porsche Dealer
Finest Selection Of New And Preowned Porsches In The Midwest!***



NAPLETON
PORSCHE

201 E. Ogden Ave. • Westmont, IL • 630-725-0911 • www.ednapleton-porsche.com



HOT, FRESH AND... FAST



Franchise Opportunities Available 708-352-8822

2204 N Lincoln Ave.
Chicago, IL.
(773) 472-7400

3146 N Sheffield Ave
Chicago IL
(773) 404-8111

36 S La Grange Rd
La Grange, IL
(708) 352-8882

75 E Wacker Dr.
Chicago, IL.
(312) 263-0070

118 S Clinton St # 118
Chicago, IL
(312) 876-1188

1504 N Naper Blvd
Naperville, IL
(630) 505-0600

15256 S. La Grange Rd Orand Park, IL (708) 403-3535

Chicago Scene
37 Lakeview Drive
Barrington, IL 60010-1949

Dated Material