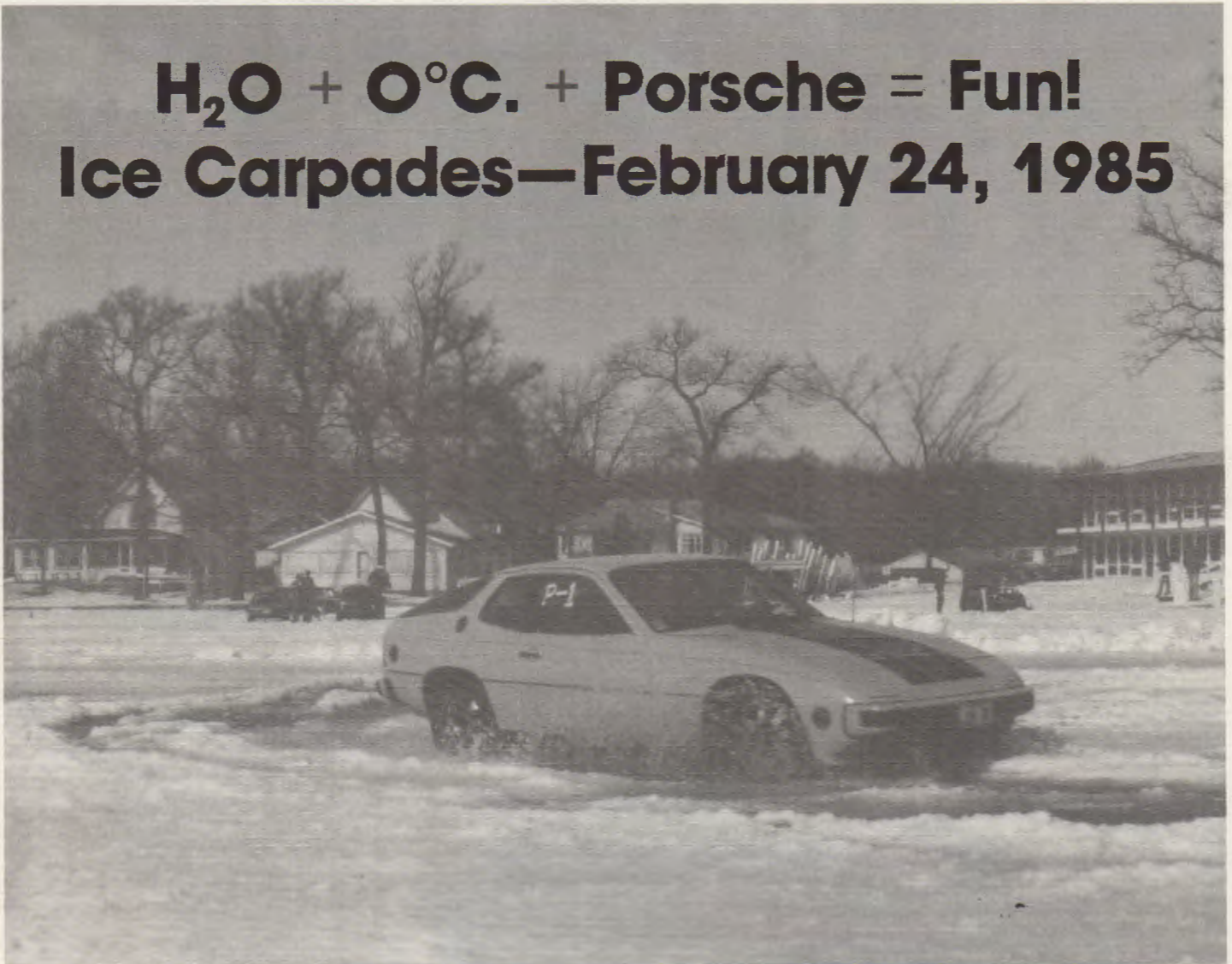


# Chicago Scene

FEBRUARY, 1985

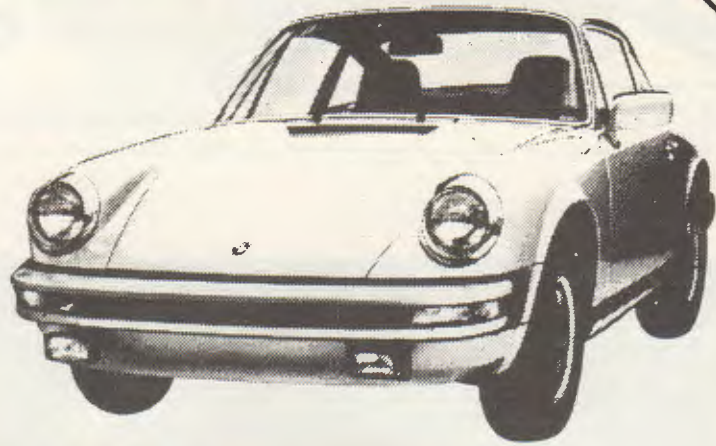
THE OFFICIAL PUBLICATION OF THE PORSCHE CLUB OF AMERICA, CHICAGO REGION

**H<sub>2</sub>O + 0°C. + Porsche = Fun!**  
**Ice Carpades—February 24, 1985**



## **IN THIS ISSUE . . .**

- **Tech Article—Snell '85**
- **Parade Photo Review**
- **Winning Bake-Off Recipes**



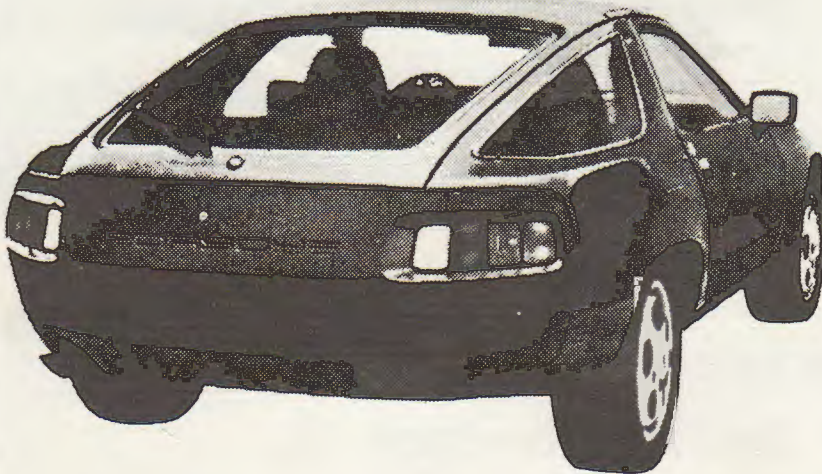
# LEE KLINGER

PORSCHE + AUDI

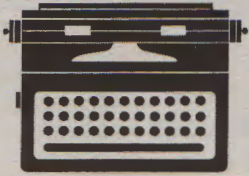
1949 St. Johns Downtown Highland Park  
(2 Blocks from the Northwestern R.R. Station)  
(312) 432-5020

MON-THUR 8:00-8:30  
FRIDAY 8:00-5:00  
SATURDAY 9:00-3:00

*parts & service*



Direct Line Dial (312) P O R - S C H E



# Scenic View

by Jackie & Dennis Raucci

Here we are again. Seems like we just finished the January issue and now the deadline rapidly approaches for getting the February "Scene" off to the printer.

As we are working on this newsletter, there are several inches of snow on the ground and the wind chill is somewhere in the "Freeze-Your-Whale-Tail Off" range. Seems like good weather for the ice races later this month.

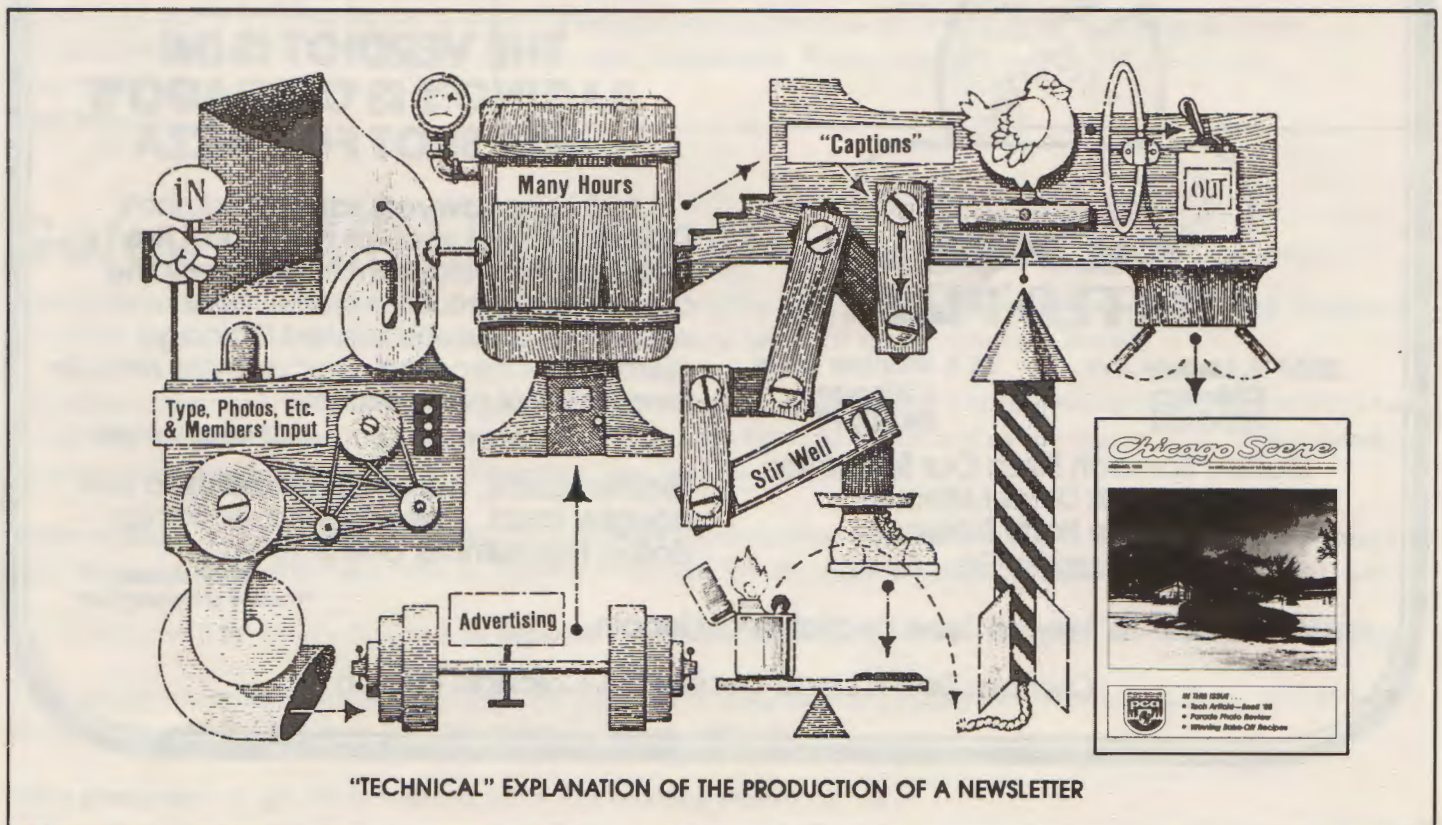
As we gaze out the window, our thoughts are of warm weather and all of the Porsche fun that goes with it. We not only look forward to the upcoming events of 1985, but fondly recall 1984 and of course—the Parade! So, in the pages of this winter "Scene" are some photos from the Parade—with people wearing shorts, T-shirts, sweat and every-

thing! Those of you who attended will probably have special memories of that week in July. For those who were unable to attend, perhaps the photos will give you some idea of what you missed.

And now, for something completely different. (Good transition, huh?) Most of you are familiar with the many people who contribute to the production of the newsletter. Someone "behind the scene" who is very important to the success of our publication is the man responsible for advertising—Tom Harwood. Tom has taken on the job of not only seeking out new advertisers, but of keeping in touch with current advertisers. This is not a new responsibility for him, as Tom has assisted newsletter editors for several years. Our thanks to Tom for his continued support.

It is not only important for all of us to patronize our advertisers, but also to let them know that we saw their ad in "Chicago Scene". They benefit by knowing their ad reaches consumers, and the club benefits by the advertising dollars, which helps to defray some of the costs of the newsletter. Many of our advertisers are even PCA members. So please . . . PATRONIZE OUR ADVERTISERS!

Last, but not least, thanks to the many members who took the time to tell us that they liked the newsletter. Thanks also to those who sent photos and articles to be used in future issues. Please continue to send them—we'll take whatever we can get. See you at the Ice Carpades! (Be sure to wear your Porsche Design thermal underwear.) ■



**partsource**  
**international**  
**warehouse parts agents**

**quality parts and accessories  
for fine imported automobiles**

Call us for the lowest prices on original equipment parts for your Porsche or other fine automobile. We buy directly from the same manufacturers who supply the Porsche factory and pass the savings along to our customers. Whether it's a set of 2.8 litre pistons, a new "bra", a set of European headlights, or state-of-the-art brake components, you can enjoy substantial savings on thousands of original equipment and selected after-market parts. Our sources include Robert Bosch, Mann, Purolator, Fichtel & Sachs, Lobro, SKF, Glyco, Sachs Sport, KKK, Kayser, and hundreds more!

At **partsource**, we sell only quality parts and accessories. Each item is carefully evaluated for quality and value. If we won't use it ourselves, we won't sell it to you . . . it's that simple. So, if you love your Porsche as much as we love ours, please try **partsource**.

For price quotes, information, or to place orders:

**(312) 382-7911**

Monday-Friday 6 PM-10 PM • Saturday 9 AM-5 PM

**GRAND OPENING SPECIAL:**  
**8 x 16 Alloy Wheels \$899<sup>00</sup>/Pair!**

p.o. box 1333 • barrington, illinois 60010



2204 N. Lincoln Ave.  
Chicago  
472-7400

75 E. Wacker Drive  
Chicago  
263-0070

Stuffed Spinach Pizza Our Specialty  
Lunch & Dinner Menus  
Private Party Rooms  
Pizza To Go

Curbside Pick-Up Service Now available at Lincoln

Owners: Dan & Linda Bacin, PCA Chicago Region

## GIVE ME THE BEST!

**THE VERDICT IS IN!  
BACINO'S IS CHICAGO'S  
BEST SPOT FOR PIZZA**

1,000 Loop lawyers ranked Bacino's Chicago's best spot for pizza and the best casual restaurant in and near the downtown area. "No matter how elaborate or sophisticated Chicago restaurants become, Chicagoans remain forever loyal pizza eaters."

Chicago Lawyer

"Better sauce, fresher ingredients, a less doughy crust . . . bite-for-bite, dollar for dollar, the number one in town."

David Hoffman  
"The Joy of Pigging Out"



## **In Focus**

*by Harold Beach  
President*

I opened my mail Friday and there was the January Chicago Scene. I hope everyone that received it thought as I did, we have another winner. Jackie and Dennis really came through from the start. (I knew they would.)

Of course any news we can send along to them will be a help in any of the future issues.

The year is beginning to take shape. All of the dates are now firm. The general meeting January 27th, you might say, will be our tune up for the year.

Joe Flores still says we will have ice for the February Ice Carpades. I've heard of a rain dance but I do wonder what an ice dance is like? Gotta call Joe about that!

I do hope everyone will remember the Lee White Tech Session in March. I'm really looking forward to that meeting on March 17 . . . it looks like a good start for our Chicago Region. ■

## **Contents**

Scenic View .....	1
In Focus .....	3
Getaway Mini-Weekend .....	3
Calendar of Events .....	5
New Members .....	5
In Die Vergangenheit .....	5
Ice Carpades .....	5
Tech Session .....	6
Letter to the Editors .....	6
Tech Article: Snell '85 .....	7
Rallye School .....	7
Parade Photos .....	8 & 9
Winning Bakeoff Recipes .....	10 & 11
Classified Ads .....	13
Registration Forms .....	15

## **Coming Next Month . . .**

Summer can't be far away! Information about the May Driving School, and the first Elkhart Lake Weekend of 1985.

## **On the Cover . . .**

Photo of Joe Flores' 924 at previous Ice Gymkhana, Lake Como, Wisconsin. Photo submitted by Vince Mietlicki.

## **Getaway Mini-Weekend** *by Phyllis Harwood, Social Chairman*

At the time you receive this issue of the Scene, I am making the final arrangements for our Getaway Mini-Weekend at the Clock Tower Inn in Rockford. Please see the January issue for more complete details.

I have been informed that we will have a selection of entrees for our Dinner/Theater event. On the registration form in this issue, I have listed the selections, which you can forward to me with your registration. If you used the January registration form, I will be contacting you for this information.

Those of you who are unable to attend the complete weekend but want to join us on Sunday for Brunch and the Time Museum Tour still have time to register with me. My deadline for Brunch registration is March 1, 1985.

The Theater will be presenting "A Luv Musical", a musical comedy based on the play "Luv" by Murray Schisgal.

If you are interested in Tennis or Racquetball, court reservations are necessary in advance by calling 1-815-398-6177, so that you may get the best suitable times for your schedule.

Make plans now to get away with us for a fun relaxing weekend. ■

# AR AUTO WERKS OF ROCKFORD

PORSCHE

AUDI

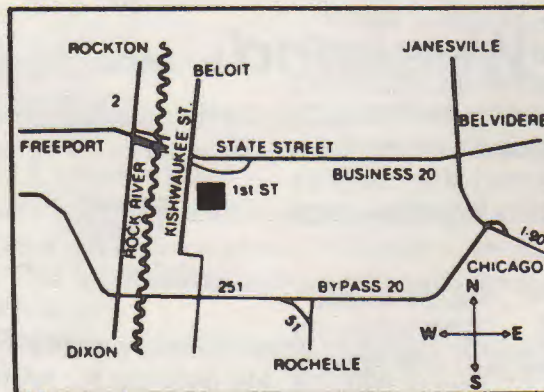
MERCEDES-BENZ

JAGUAR



- WE OFFER THE FINEST IN PORSCHE PARTS AND ACCESSORIES AT DISCOUNT PRICES!  
(DISCOUNTS ON OTHER MAKES, ALSO!)  
WE SHIP DAILY AND ACCEPT VISA, MC, AMEX  
\$300,000 INVENTORY!
- PICK-UP SERVICE AVAILABLE! CONTACT KEVIN CONNELLY, SERVICE MGR. FOR DETAILS.
- CONCERNED PORSCHE SERVICE BY OUR EXPERIENCED STAFF USING THE FINEST DIAGNOSTIC EQUIPMENT AVAILABLE.
- EXCLUSIVE 10% LABOR DISCOUNT TO PCA MEMBERS, ONLY! DISCOUNT APPLIES TO YOUR **OTHER** CAR, TOO!

CALL FOR  
UNADVERTISED  
SPECIALS



LOOKING FOR A  
NEW PORSCHE?  
CALL US  
FOR DETAILS!

CALL PARTS DIRECT 815/968-9400  
15% PARTS DISCOUNT TO PCA MEMBERS

208 KISHWAUKEE STREET • ROCKFORD, ILLINOIS 61108 • 815/968-9100

**Help!**  
**... and new**  
**members**  
 by Sheila & Arnie Zann

What an experience! The phone started ringing immediately and hasn't stopped. Bob and Chris had told us that inquiries ran about 4 to 5 calls a month. Would you believe that we received about 23 calls in the first two weeks? We almost rolled over and gave up. The questions are interesting as are the people, but we don't always have the answers, and that's where we need HELP.

If any of you out there are "experts" in any facet of Porsche ownership, whether it's knowing someone to repair a disastrous 356 or a body customizer for any type of body (car body only), we could sure use your name to pass on to all these nice people and their Porsches.

New members for the month of February include, (would you believe only two red cars) and they belong to 928 owners Ronald and Patricia Caudle, and 944 owners Larry Fik and Joyce Cosgrove. Also, we would like to welcome Jon Souky with his green 911S, and a silver 930 that belongs to John & Jeannie Ruther.

Welcome to all of you. ■

**Calendar of Events**

- January 27 ..... General Meeting
- February 24 ..... Ice Gymkhana
- March 9 ..... Mini-Weekend
- March 17 ..... Tech Session
- April 14 ..... Rallye School
- May 5 ..... Driving School
- May 25-26 ..... Elkhart Lake I
- June 8 ..... Boat Ride
- June 23 ..... Rallye
- July 10 ..... Blackhawk I
- July 28 ..... Potter's Picnic & Concours
- August 7 ..... Blackhawk II
- August 17-18 ..... Elkhart Lake II
- September 8 ..... Concours at Oakbrook CC
- September 22 ..... Charity Gymkhana
- October 12-13 ..... Michigan Wine Tour
- November 10 ..... Art Show & Concours
- December 7 ..... Dinner Dance

**In Die Vergangenheit** by Ginny & Bob Gummow

- 1960: Twenty-six cars turned out for the "Press On Regardless" rallye through the southern environs of the Chicago area. A good dinner followed at Mickleberrys. Only present members in the results were the Gummows who came in 8th (in their Porsche, in the winter). Upcoming February 14 event—St. Valentine's Day Massacre Rallye.
- 1965: Thirty competitors turned out for the Ice Dice January 31. Clear and cold (-10°). Timers kept warm with Polyethylene Punch and Werner Voegeli's squad car heater. Familiar names in the results: Bob Gummow, 6th; Ray Cuny, 11th; Ray Stonecipher, 13th; Harold Beach, 19th in Men's Class and Ginny Gummow, 3rd; Doris Beach, 6th in Ladies. Upcoming February 13 event—Beach's Bordello Costume Party.
- 1975: Thirty-seven competitors turned out for the Men's Class competition and 18 in the Women's Class at the January 19 Ice Gymkhana. The weather was perfect at 30° and sunny. There was a regular course set up and also one featuring a mathematical problem of determining the shortest course to complete the complex assignments. Familiar names in the results: OJ Meyer, 1st; Owen Johnson, 2nd; Bruce Janecek, 3rd. Mike Robbins and his new bride came up from Indy. Applicant Tom Harwood and friend were also there. Upcoming February 23 event—Freak's Frolic Rallye starting at Pepper Tree Farms Cabana Club in Palatine.

**Ice Carpades... The Ice Gymkhana 1985**

This is the last *Chicago Scene* you will receive before the Ice Gymkhana to be held at Lambs Farm, Sunday, February 24, 1985. See the January issue for complete details and map. A registration form is included in the back of this issue for your convenience.

Come watch Porsches and non-Porsches slipping and sliding on the ice while enjoying hot chocolate, coffee, etc. If it gets too cold to stand outside and watch, you can visit the Pet Shop, Country Store, Bakery and Silkscreen Art Shop. Be sure to stay for the dinner served at 5:30 in the Country Inn located on the Farm. It is a great way to share your experiences of the day and meet and greet old and new Porsche friends. (Joe Flores, Chairman / Vince Mietlicki, Co-Chairman)

# March 17th Tech Session

by J. W. Bushmeyer

WHERE: Westin Hotel  
6100 River Rd., Rosemont

TIME: 1:00 P.M.-4:30 P.M.

CASH BAR

Tired of the high tech discussions as to why the Porsche factory has decided to put 15 ball bearings in the wheels instead of 14?

Ever wonder what really happens behind the scenes of a racing team that has direct contact and Porsche factory support?

Well then, my friend, do we have a deal for you! Join us March 17th at the new O'Hare Westin, 6100 River Road, Rosemont, Illinois, and meet Lee White, current team manager and crew chief of the Herman Miller Porsche Turbo Trans-Am team. Lee is the guy who rebuilt the Herman Miller D-production 924 in 24 hours at the 1980 Road Atlanta SCCA Runoffs.

In 1981, he was crew chief for the Porsche factory entered Carrera 924 Turbo prototype at Daytona. This led to the development of the Turbo 924 in the Trans-Am and IMSA.

In 1982 he was team manager for the B.F. Goodrich-Porsche effort at



Daytona, Sebring, and LeMans. This launched the present BFG program with two 962 Porsches in the 1985 season.

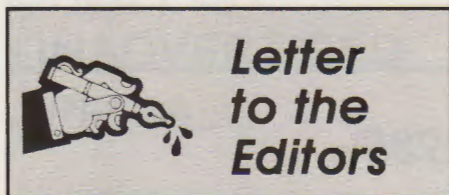
In 1983, Lee was team manager/crew chief for the Herman Miller-BFG Turbo effort. The Holbert constructed tube frame was used.

In 1984 Lee changed the tube frame to his own suspension design and advanced the level of engine H.P. and concentrated on the Trans-Am series. Results: Qualified top five every race entered, and won at Mosport—these are amazing accomplishments done against the megabucks of Ford and GM.

1985: Lee is in line for the proposed development of the 944 Turbo engine with new purpose designed chassis for Trans-Am or IMSA.

Please plan to join us for this outstanding opportunity to hear about Porsche race car development, the inside story, and possible tips on how this knowledge can be applied to your street car. Lee is also going to bring with him the highly acclaimed BFG/Porsche LeMans effort film for our viewing.

Be there—or maybe your auto-cross competition may learn something you didn't! ■



Dear Dennis & Jackie,

"... Although I have known a lot of the new officers/directors for a while, I was surprised to find out some of the facts that appeared in the thumbnail sketches about them. A suggestion... perhaps you can get the

members of the club to submit 50 or 70 words each... about their family, job, interests, etc... New and old members alike could find another common ground... and might... give new members a subject to "break the ice" with when they want to approach a board member... for his/her signature... New members may not feel comfortable talking about Porsche when they may think "These people are all experts. I will make a fool of myself." We know this is not the truth... but they don't."

—John D. O'Keefe

*Thank you, John, for your letter. You were not the only one interested in reading more about the members of Chicago Region. Others have voiced similar interest, so enclosed on a separate sheet is the questionnaire the new officers and directors filled out. We're asking all members to take a few minutes to answer the questions and return the form to us. The information we receive will be used in future issues of the Scene. Mail to Jackie & Dennis Raucci, 2725 N. Thatcher Ave., Suite 301, River Grove, IL 60171.*

# **SNELL '85**

*by Nick Brenkus, Safety Director*

There have been many requests for information on the 1985 Snell standard and how it compares to the 1980 standard and other standards. Listed below are the major changes and/or additions:

1. The 1985 basic standard is designed around motorcycle use, though the same helmet may be used for most activities requiring high performance helmets.
2. The 1985 standard has lowered the allowable test "g's" from 300 to 285.
3. The penetration test using a 60 degree pointed projectile has been removed and substituted with a 1/4" steel I-beam test. This type of shape is found to be involved in many real life accidents, where the pointed projectile is not. Testing has shown that many DOT only helmets will fail this test.
4. As impact testing requires two impacts in the same spot, the 1985 standard has increased the velocity of the first impact and lowered the second again reflecting results of more real life accidents as observed in the field.

Helmet standards are designed to test the ability of a helmet to attenuate energy. The more severe the impact and the lower the allowable g's the tougher it is for a helmet to pass the test. The DOT standard requires the lowest performance from helmets, though accident studies show a DOT helmet is adequate in most street accidents; this standard allows 400 g's.

The American National Standards Institute Z90.1 '79 standard is equivalent to the 1970 Snell standard, the International Standards Organization standard, the British standard and the new European standard. A helmet passing the Z90 standard is subjected to impacts with approximately 59% more input energy than DOT and 26 percent more input energy than Z90.1 '79. In addition, the '85 standard allows only 285 g's and is truly the highest performance standard in the world.

It is unfortunate that some companies, in their advertising, confuse the buyer by distorting the basic objective of standards—to test the ability of a helmet to attenuate energy. There is no doubt that helmets produced to any standard greatly increase a driver's or rider's chance of survival and decrease the instance of injury.

It is apparent that on competition courses, as well as on the street, that helmets produced to higher, more severe standards provide increased protection and sometimes are the difference between life and death.

There are many things that determine which helmet a customer buys: price, application or environment, requirements by law or organizations and others. Helmets are manufactured to different standards to accommodate these needs. However, the consumer should purchase a helmet wherever possible to the highest standards. ■

---

## **Indiana Meyer and the Learn to Rallye Better School April 14, 1985 11:00 a.m.**

This Rallye School is for first time rallyists, and seasoned pros. There will be something for everyone to learn and all will benefit from the questions and experiences of the students. We will have a classroom session followed by a short practice rallye. At the end of the practice rallye, we'll return to class for a critique and a chance to ask questions of a panel of experts. We will then have a TSD Rallye to put into practice what you have learned. Trophies will be awarded at dinner. The dinner will be served buffet style at the Knights of Columbus Hall in Merrillville, Indiana. Reserve the day. (Registration form will be in March issue). ■



# Memories of Porsche Parade '84

Appleton, Wisconsin

Photos by D. Raucci





# Winning Bake-Off Recipes



## 1st Place "Ferry Porsche's Favorite"

### AMARETTO MARSHMALLOW PIE by Lee A. Lichtenstein

Crumb Pie Shell  
1 Pkg (10-oz) Large Marshmallows  
1/2 Cup Milk  
3-4 Teaspoons Swiss Miss (or equivalent)

1 Cup Whipping Cream, Whipped  
1/2 Cup Amaretto Liqueur  
Garnish (reserved crumb mixture, chocolate chips, additional whipped cream, etc.)

Prepare your favorite flavor cookie crumb or ready-made pie shell.

In 3-Qt. casserole place marshmallows and milk. Cover. Microwave at HIGH 2-3 minutes, until mixture can be stirred smooth. Add Swiss Miss and blend. Chill in refrigerator (about 30-40 minutes) until thickened, stirring occasionally.

Fold in whipped cream and amaretto. Pour into pie shell and decorate with garnish, if desired. Refrigerate several hours or overnight, or freeze. Makes 1 (9-inch) pie.

VARIATIONS: Kahlua Pie (Substitute 1 tsp. instant coffee powder and 1/2 cup kahlua liqueur for cocoa and amaretto ingredients). Grasshopper Pie (Omit cocoa and into cooled marshmallow mixture, stir 1/4 cup green cream de menthe and 2 tbs. white creme de cocoa). Brandy Alexander Pie (Omit cocoa and into cooled marshmallow mixture, stir 1/4 cup dark creme de cocoa and 2 tbs brandy).

## 1st Place "Richest"

### LEMON-GLAZED CHEESECAKE by Sue Allman

2 Cups Graham Cracker Crumbs  
6 Tablespoons Melted Butter  
2 Tablespoons Sugar  
3 8-oz. pkg. (1½ lbs.) Cream Cheese  
3/4 Cup Sugar  
3 Eggs  
1/4 Cup Lemon Juice  
2 Teaspoons Grated Lemon Rind

2 Teaspoons Vanilla  
2 Cups Sour Cream  
3 Tablespoons Sugar  
1 Teaspoon Vanilla

Lemon Glaze\*  
Curled Lemon Strip, Large Strawberry and Mint Leaves (Garnish)

Preheat oven to 350°F. Combine first 3 ingredients thoroughly. Press crust evenly onto bottom and sides of buttered 9x3-inch springform. Bake 5 minutes. Cool.

Beat cream cheese until soft. Add sugar, blending thoroughly. Add eggs 1 at a time, beating well after each addition. Mix in lemon juice, rind and vanilla. Blend well. Turn into springform pan. Bake 35 minutes.

While cake is baking, blend sour cream, sugar and vanilla. Remove cake from oven. Gently spread sour cream mixture over top. Return to oven and bake 12 minutes. Cool on rack 30 minutes.

Spread with lemon glaze. Chill several hours or overnight before removing sides of pan. Garnish with lemon strip, strawberry and mint leaves.

#### \*Lemon Glaze

1/2 Cup Sugar  
1½ Tablespoons Cornstarch  
1/4 Teaspoon Salt  
3/4 Cup Water

1/3 Cup Lemon Juice  
1 Egg Yolk  
1 Tablespoon Butter  
1 Teaspoon Grated Lemon Rind

In heavy 1-quart saucepan mix sugar, cornstarch and salt. Combine water, lemon juice and egg yolk and add to sugar mixture. Cook over low heat, stirring constantly, until the mixture comes to a slow boil and is thickened. Add butter and lemon rind. Allow to cool slightly, but spread on cheesecake before glaze sets. 16 to 20 servings.

## 1st Place "Most Unique"

### "PORSCHE ARTICHOKE BAKE OFF WINNER" by Paul M. Stromborg, M.D.

8 oz. Artichoke hearts (1 can). Slice finely and spread over pie tin bottom. Melt together 1 stick of margarine plus 1 8 oz. packet of cream cheese. Pour melted mixture over artichokes and cover with thick generous layer of parmesan cheese. Bake in 350° oven for 30 minutes. Serve with crackers of choice at Porsche event.

## Winning Bake-Off Recipes (continued)

### 1st Place "Fruitiest"

#### LEMON MERINGUE PIE by Linda Patterson

Make a baked single-crust pie shell  
For 9" pie  
1½ Cups Sugar  
1/3 Cup Cornstarch  
1½ Cups Water

3 Egg Yolks Slightly Beaten  
3 Tablespoons Butter  
1/4 Cup Lemon Juice  
1 Tablespoon Lemon Rind



Mix sugar and cornstarch in saucepan. Gradually stir in water. Cook over medium heat, stirring constantly until mixture thickens and boils. Boil 1 minute. Slowly stir at least half the hot mixture into egg yolks. Then blend into hot mixture in saucepan. Boil 1 minute longer, stirring constantly. Remove from heat. Continue stirring until smooth. Blend in butter, lemon juice and rind. Pour into baked pie shell. Cover with pie meringue. Bake.

Pie Meringue  
3 egg whites  
1/4 Teaspoon Cream of Tartar or Lemon Juice  
6 Tablespoons Sugar  
1/2 Teaspoon Flavoring

Heat oven to 400° (mod. hot). Beat egg whites with cream of tartar until frothy. Gradually add sugar. Continue beating until stiff and glossy. Beat in flavoring. Pile meringue onto hot pie filling, being careful to seal the meringue onto the edge of the crust to prevent shrinking or weeping. Bake 8-10 minutes or until delicately brown. Serve when cool.

## Wally's PORSHOP INC.

WE TAKE PRIDE IN DOING IT RIGHT...  
THE FIRST TIME.

- Preventive Maintenance & Evaluation Programs.
- Brake System Conversion, Modifications & Updating.
- Performance Modifications of all Injection Systems.
- Weber Carburetor Rebuilding & Performance Rejetting.
- Gear Changing & Cam Timing Alterations.
- Engine Rebuilding; Stock or Race Specifications.
- Chassis Setting, Lowering, Bump Steer & Alignment.
- Chassis Reinforcement, Swaybar Installation & Conversions.

Benefit from our winning record in building and maintaining  
IMSA, Trans-Am and National Production Class Porsches.

# 333-6606

BY APPOINTMENT ONLY



## BETTER BREAK CO.

Better Brakes... and a Whole Lot More!

PORSCHE PARTS AND ACCESSORIES EXCLUSIVELY

# BACK BY POPULAR DEMAND!!!

### COLORS AVAILABLE

- BLACK
- WHITE
- SILVER

### SIZES

- XS—6¾ x 6⅞
- S—7 x 7⅞
- M—7¼ x 7⅞
- L—7½ x 7⅞
- XL—7¾ x 7⅞



**The Vetter Fiber™ 100 now with a 1985 Snell approval— Still \$99.95!!**

The Vetter Fiber™ helmet now meets the toughest, highest industry standard... SNELL '85. The new standard for years to come, the Vetter Fiber™ '85 is handcrafted of multi-layered fiberglass. It features a urethane finish, scratch resistant shield, and a terrycloth liner that keeps your head cool during those hot laps. You can spend twice the price and not get a better helmet! If you're thinking of upgrading, this is your opportunity to save while meeting coming PCR changes *before* they happen!



## BAGMAN

by Vetter

### HELMET BAG

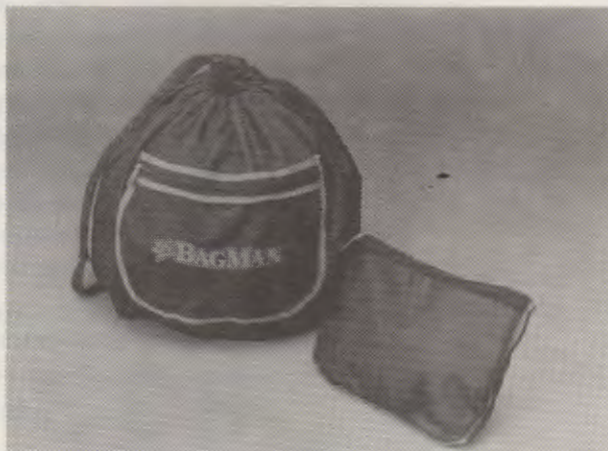
With the purchase of our ever popular Vetter 100 helmet, we offer our fleece-lined helmet bag for only **\$12.95** (regular list \$19.95).

## BAGMAN

by Vetter

### HELMET STUFF SACK

**OR**, should you prefer to buy the new Bagman Helmet Stuff Sack, this nifty item can carry more than just your helmet and folds up inside itself in seconds— **\$14.95**

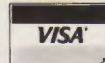


Charge, Check or Money Order To:

## BETTER BREAK CO.

3890 Sandpiper Drive • Hanover Park, IL 60103 • (312) 837-3494

PORSCHE PARTS AND ACCESSORIES EXCLUSIVELY



## PSST! Wanna Buy A...?

911-912 PARTS (New in box): Bosch H-1 headlight assemblies, primed headlight rims, Hirschmann black mast antenna, braided steel brake lines. (Used, in very good cond. for early 70's models). Mohn bike rack, gas tank w/sending unit, wiper motor, muffler w/chrome tip, left/right doors complete ('65-'68 only), air cleaner assy. (carburetor type). Best offer. Chet Szerlag (W): 962-6870 (Days) (H): 369-9496.

PARTS: 911 rear fender extensions, Carrera and SC, P.N. 911 503067.03 and 068.03 \$75 pair. '69 911 parts: Sportomatic transaxle \$150. Rear suspension bananas \$40 each. Drivers door good. \$125 complete. WANTED: Older Porsche, any model, repairable, restorable or "what have you." Brad Mayeur, 2328 Cole Street, E. Peoria, IL 61611. (309) 673-5115 (W) / 694-1797 (H).

FOR SALE: 1973 Porsche 914 2.0 parting out or will sell as is (rusty), alloys, side shifter, etc. 912 engine complete 6000 miles on a rebuild \$1000 firm. Ricardo Gonzales. Hammond, Indiana. (219) 845-6837.

FOR SALE: 1983 911 Cabriolet. Guards Red, champagne beige leather, power windows, mirrors, heated windshield, factory alloys, P7's, Blaupunkt AM/FM stereo cassette, seek scan etc. Factory alarm, air conditioning, (heated) garage kept. No salt/snow/dings/dents. Factory mats. If Porsche offered it, this one has it! \$36,499 or best offer. Need cash for Atlantic Race effort. Peter R. Heckmann (312) 291-0050 or 680-1525.

FOR SALE: Four used 215 60 x 15 Yokohama 001R Tires \$150 for all. Also 944 "Go-Fast Stuff"—headers, sway bars, trick stuff, etc. Call Dan Bacin at 975-0675.

FOR SALE: Ronal alloy wheels 14" x 6". Fit Porsche 5 bolt pattern. \$150 or best offer. Call Rich at 460-3106.

FOR SALE: Blk/blk 944. Fully optioned with leather, 16" gold BBS wheels with P7's. Many extras. Flawless. Asking \$22,250 or best offer. Arnold Zann. 312/386-2864.

FOR SALE: 1969 912 Targa (Vehicle ID #129010613) 5 speed Polo Red, 93,000 on chassis, 4,000 on rebuilt engine. Original Porsche wheels, new Dunlop tires, new brakes, AM/FM Cassette, new rubber seals throughout. Partially restored. Asking \$6,500 or offer. Call Nick Brenkus at (312) 837-3493.

FOR SALE: 1973 914/6 #9140431748. A fabulous autocrosser with a 2.6 liter 200 HP Stoddard built engine, "S" brakes and suspension. 4 vented disc brakes, ex. adj. Koni shocks, 2 three barrel Weber's, sway bar, 911 instruments, battery and fuel pump relocated in front, copper fuel lines, P7's (7" front and 8" rear 16" wheels). Stoddard flared fenders, green w/black int. 40,000 miles, never driven in snow or winter. This car is well maintained, immaculate and awesomely fast. \$14,500.00. Doc Campbell, 14290 Goddard, Detroit, MI 48212 (W): (313) 891-2390 (H): (313) 331-2745.

FOR SALE: 4 Pirelli CN-36's on 6" x 15" alloy replicas. Exc. cond. \$700. 2 perfect 7" x 16" fact. forged alloys. \$500. 1 new 5 1/2 x 15" 914 wheel w/Dunlop. \$60. D. Raucci. 452-6222 (Eve.)

GARAGE SALE: Four 225/50 x 15 Goodrich Comp TA. Near new—100 miles on tires. Cost \$900, sell \$650 set. 911-914/6 aluminum flywheel, pressure plate and disc. Like new. \$250 set. 911SC sport steering wheel \$75. Two 911 front fenders and IROC bumper. Looks like RSR. \$300 set. Early 911 gauges (5). Speedo KPH \$50 set. Two 911 trailing arms. '74-'84 \$150 each/\$250 pair. Two 911 fog lights \$25/pair. Two 911 rear rotors and calipers from SC. Excellent. \$300 set. Pair of 911S caliper adapters for early 911 struts or 914/6 \$100 pair. Two early 911 shortened struts. Carrera shocks, modified A-arms and cross tube. These are racing parts from Overby in Florida. Cost \$1,000. Sell \$250 set. One 911 or 914/6 steering rack and tie rods \$250. One 911 master cylinder \$40. One set front and rear 911 torsion bars (stock) \$40 set. One fairly complete '78 CIS fuel injection for parts \$400. One SC 3.0 litre crankshaft with new bearings \$500. One complete set 911 engine sheet metal \$100. One set 911 2.0 litre cylinder heads \$100. Seven position adjustable 19mm swaybar for 911 with all hardware \$75. Rear 911 swaybar 16mm \$40. Eight BBS racing brake cooling fans (like on 935). Should fit 15" wheels \$150 set. One set 911 Bilstein gas shocks (stock) front and rear '72-'77 \$100 set. One pair 911 Bilstein sport shocks for SC rear. Like new \$100 pair. Two 911 engine oil coolers \$50 each. One set of new 911 A arms '66-'69 \$150 set. One set of 911 914/6 A arms '69-'73 \$150 set. One complete 901 trans from '73 914 2.0 \$150. One ZF steering box complete with tie rods for 356 \$75. One towbar for any 356 \$50. One new in box 356SC engine case and cover from Stoddard \$300. WANTED: 7" x 15" factory alloys. Targa top for 1975 911. Call Chuck Schank at 887-6037 (Days) 246-6395 (Evenings). If not home, leave message on recorder.



## PERFECT POWER

Porsche 911, Mazda Rotary and Lycoming aircraft engines built to customer specifications. Absolutely no compromise workmanship. All engines dynamometer tested and tuned. Dyno services also available separately. Call Sol at Perfect Power at 312/367-8837 or write Perfect Power, 854-C Liberty Drive, Libertyville, IL 60048.

# Peter Fischer Import Motors Inc.

1015 TOWER ROAD  
P.O. BOX 373  
WINNETKA, IL 60093

Parts and Accessories Available

**312-446-0414**

★ BOSCH WHEEL ALIGNMENTS

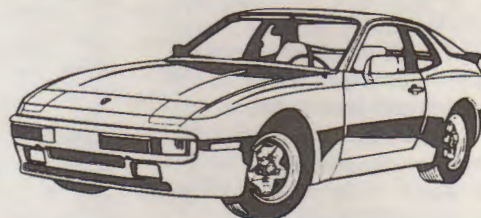
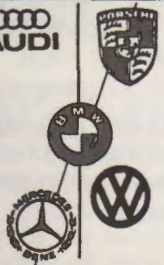
★ 25 YEARS EXPERIENCE

Weekdays 8:00am to 5:00pm

Saturdays By Appointment

Drop off Service Available for N.W. Suburbs

**SPECIALIZING  
IN COMPLETE  
MAINTENANCE  
AND REPAIR  
ON**



## We Are The Newest And Most Aggressive Porsche Audi Dealership In The Midwest

OUR STAFF OF EXPERIENCED SALES PEOPLE ARE EAGER TO HELP AND CAN ANSWER ANY OF YOUR QUESTIONS ABOUT EUROPEAN DELIVERY, LEASING AND PRODUCT KNOWLEDGE.

OUR SERVICE DEPARTMENT IS DEDICATED TO "WE CARE / ONE STOP" SERVICING.

OUR PARTS PERSONNEL WILL FIND THE PARTS YOU WANT PROMPTLY. WE OFFER A SPECIAL DISCOUNT TO PCA MEMBERS.

**We Want Your Business  
And We Will Prove It !!**



**219-947-1581**

**Just 45 Minutes From The Loop**



## Ice Carpades Registration February 24, 1985 • Lambs Farm

DRIVER #1 (\$6.00) \_\_\_\_\_ Name \_\_\_\_\_ DRIVER #2 (\$3.00) \_\_\_\_\_ Name \_\_\_\_\_

VEHICLE \_\_\_\_\_ MODEL \_\_\_\_\_ YEAR \_\_\_\_\_ COLOR \_\_\_\_\_

NOTE: Studded tires are NOT approved for this event; helmets will be required.

\_\_\_\_\_ Number of Adult Dinners (\$11.85) ..... \$ \_\_\_\_\_  
 \_\_\_\_\_ Number of Children (14 yrs. & under) (\$4.55) ..... \$ \_\_\_\_\_  
TOTAL \$ \_\_\_\_\_

If not attending dinner, a \$3.00 charge will be assessed each person for coffee, hot chocolate, and rolls.

ENTRIES MUST BE POSTMARKED BY FEBRUARY 18, 1985 OR ADD \$1.00 TO EACH DRIVER. MAKE CHECKS PAYABLE TO PCA/CHICAGO REGION. MAIL TO: MS. KATHY MIETLICKI, 2501 S. 6th Ave., North Riverside, IL 60546

### Getaway Mini-Weekend Deadline for Reservation 2/5/85

DEAR PHYLLIS:

Please sign me up for the Getaway Mini-Weekend. I have enclosed a \$50.00 check made out to the Clock Tower for my room reservation. Balance to be paid on check out at Clock Tower (Total \$99.50 + tax). We also would like to attend the brunch and enclosed is a check to PCA/Chicago Region for \$12.50 per person.

SIGNED \_\_\_\_\_ NO. ATTENDING \_\_\_\_\_

I will be unable to spend the entire weekend. Please sign me up for the following checked events. Enclosed is a check made out to PCA/Chicago Region to cover them:

- DINNER/THEATER, Saturday, March 9, 5:30 p.m.  
 \$21.00 per person includes tax and gratuity. .... No. Attending \_\_\_\_\_
- BRUNCH, Sunday, March 10, 11:00 a.m.  
 \$12.50 per person includes tax and gratuity. .... No. Attending \_\_\_\_\_
- The Clock Tower Tour, March 10, 1:30 p.m., \$1.75 per person ..... No. Attending \_\_\_\_\_

DINNER/THEATER REGISTRANTS please mark your choice:

- PRIME RIB  POACHED NEW ENGLAND MONK FISH
- BONELESS PORK LOIN SAUCE ROBERT  BREAST OF CHICKEN—NORMANDY

SIGNED \_\_\_\_\_

MAIL TO: Phyllis Harwood, Social Chairman  
 1142 Florimond Drive, Elgin, Illinois 60120  
 312/742-6804

### March 17th Tech Session Registration

WHAT: Tech Session with Lee White, Team Manager and Crew Chief  
 Herman-Miller Porsche 924 Turbo Trans Am Car

WHEN: March 17, 1985 at 1:00 p.m.-4:30 p.m.

WHERE: Westin Hotel  
 6100 River Road, Rosemont, IL 60018

COST: (pre-registration) \$7.50 per person or \$10.00 per couple (associate member)  
 (pay at the door) \$8.00 per person or \$10.50 per couple (associate member)

I WANT TO HEAR THE INSIDE STORY ON PORSCHE AND RACING—PLEASE SIGN ME UP.

Name \_\_\_\_\_ No. Attending \_\_\_\_\_

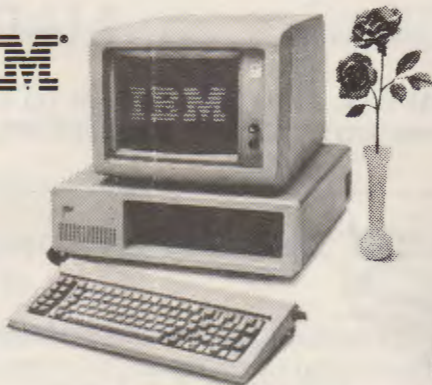
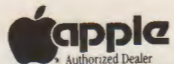
SEND TO: Jack Bushmeyer, 1034 Cobblestone Court, Northbrook, IL 60062

# HOME AND BUSINESS COMPUTER SYSTEMS

**Applications software:**

- ★ Customized data base, spreadsheet programs
- ★ Education
- ★ Inventory w/point-of-sale
- ★ Accounts receivables

- ★ General ledger
- ★ Accounts payables
- ★ Payroll, fixed assets
- ★ Medical office management system w/hard disk drive



The word Apple is a registered trademark of Apple Computer, Inc. IBM PC is a registered trademark of International Business Machines Corp.

*Multi-User IBM-XT-AT, Altos, Televideo, IMS Computer Systems Available; with full training and support.*



**JAYDEE CORPORATION**  
 822 SOUTH LAFLIN  
 CHICAGO, IL  
 738-1105

CALL JOE FLORES, CHICAGO PCA

## Body Werks of Barrington

For the Finest in  
**PORSCHE, MERCEDES and BMW**  
 Work and Painting



**Cycle Works  
 Of Barrington**

**DESI VINCZEN • 126 Cook Street • Barrington, IL  
 381-9144**

## Officers



**President:**  
**Harold Beach**  
(312) 344-3508



**Vice President:**  
**Jack Bushmeyer**  
(312) 291-9093



**Secretary:**  
**Julie Quebe**  
(312) 870-0543



**Treasurer:**  
**Eve Estrada**  
(312) 237-0915



**Past President:**  
**Brian Allman**  
(312) 382-5933

## Directors



**Director:**  
**Nick Brenkus**  
(312) 289-3396



**Director:**  
**Todd Kaitis**  
(312) 490-0525



**Director:**  
**Walter Minato**  
(312) 259-7334



**Director:**  
**Jerry Quebe**  
(312) 222-1300



**Director:**  
**George Rudawsky**  
(312) 823-2156

## Coordinators

### Autocross:

Bill Bartlett ..... 584-0891  
Ed Leed ..... 382-6911

### Concours:

Bruce Janecek ..... 246-5492

### Gymkhana:

Todd Kaitis ..... 490-0525

### Membership:

Arnold & Sheila Zann ..... 386-2864

### Rallye:

George & Linda Gutmann ..... 631-6042

### Safety:

Nick Brenkus ..... 289-3396

### Social:

Phyllis Harwood ..... 742-6804

### Tech Crew Chief:

Russ Iser ..... 423-7918

### Goody Store Magnate:

Linda Patterson ..... 223-5685

## Newsletter Staff

### Editors:

Dennis & Jackie Raucci ..... 452-8880

### Photographer:

John Bohlander ..... 963-8076

### Advertising:

Tom Harwood ..... 742-6804

(All Area Code 312 unless noted)

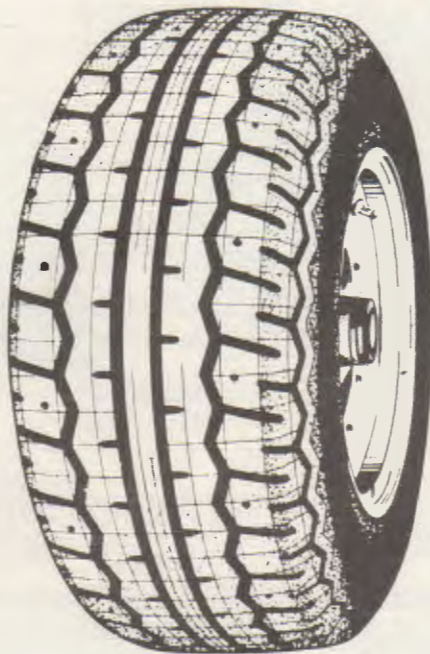
The *Chicago Scene* is the official publication of the Porsche Club of America, Chicago Region, and is published monthly. Material must be received by the Scene editors no later than the 10th of the month to be published in the next issue. Contributions will be published on a space available basis. The editor reserves the right to edit, as necessary, all material submitted for publication. The Porsche Club of America, Chicago Region, is not responsible for any services or merchandise advertised herein.

Statements appearing in the Scene are those of the author and do not constitute an opinion of the Porsche Club of America, Chicago Region, or its Board of Directors.

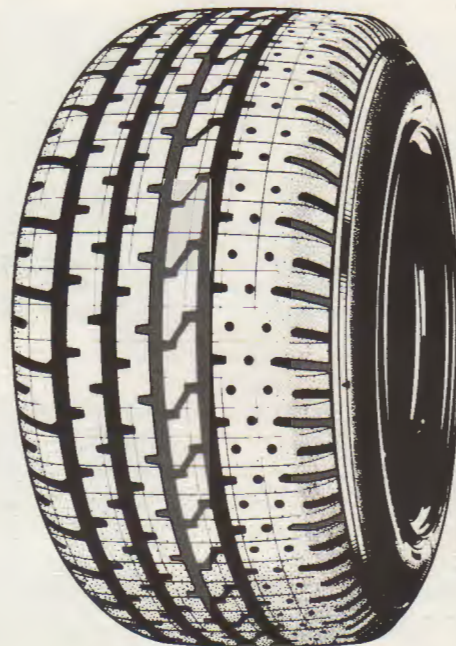


# YOKOHAMA

## Uncompromised High Performance Tire Technology



**A001R**



**A008**

AVAILABLE IN SIZES:

**A008**

195/50VR15

205/50VR15

225/50VR15

205/55VR16

225/50VR16

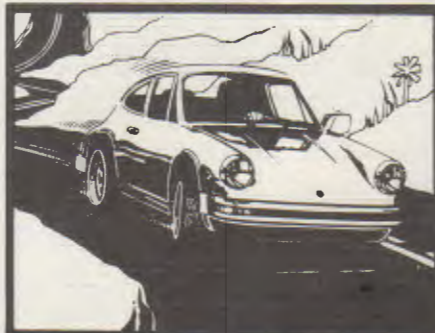
**A001R**


205/60HR14

195/60HR15

215/60HR15

Other sizes upon request.



 **YOKOHAMA**

**CHARIOT ENTERPRISES**

DAN BACIN

(312) 975-0675

# For Serious Performers