

# CHICAGO SCENE MARCH 1981

## OFFICERS



PRESIDENT		
Wilma White	217/367-0356	
VICE PRESIDENT		
Rip Patterson	312/223-5685	
TREASURER		
Tom Harwood	312/742-6804	
SECRETARY		
Helga Meyer	219/838-9232	
DIRECTORS		
Bob Gamble	312/642-0608	
Dick Gunther	312/966-5195	
George Gutmann	312/631-6042	
Joe Hill	312/545-5351	
Owen Johnson	312/325-8664	
Bob Ostholthoff	312/251-8907	
AUTOCROSS COORDINATOR		
George Rudawsky	312/823-2156	
CONCOURS COORDINATOR		
Bruce Janacek	312/246-5492	
MEMBERSHIP CHAIRPEOPLE		
Mae & Walter Minato	312/259-7334	
NEWSLETTER EDITOR		
Linda Gutmann	312/631-6042	
RALLYE COORDINATORS		
George & Sara Melford	312/297-7358	
SOCIAL COORDINATOR		
Susan Allman	312/564-0557	

The Chicago Scene is the official publication of the Porsche Club of America, Chicago Region, and is published monthly.

Material must be received by the Scene editor no later than three days after the Club's event to be published in the next issue. Contributions will be published on a space available basis. The editor reserves the right to edit, as necessary, all material submitted for publication.

Pictures appearing in the Scene are property of the Chicago Region. If you wish a blow-up or print, simply write the editor. Cost will be reproduction charges only.

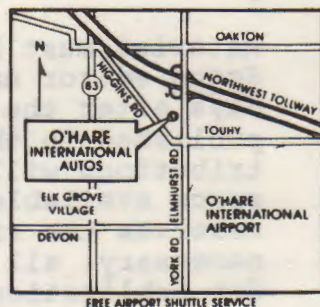
Statements appearing in the Scene are those of the editor and do not constitute an opinion of the Porsche Club of America, Chicago Region, or its Board of Directors.

# O'Hare International Autos – Midwest's "Number 1" source for new Porsche – Audi – Mazda parts!

- Midwest's largest computerized parts inventory – over \$300,000 stock on hand.
- Reliable factory service and parts from largest Porsche, Audi, Mazda Dealership in middle west.
- Special emergency Parts Hotline – (312) 297-8606.
- Direct computer line to factory parts order center.
- Daily factory parts shipments and distributor pick-ups.
- Fast, experienced, knowledgeable countermen service.

O'HARE INTERNATIONAL AUTOS, INC.

1000 ELMHURST ROAD • ELK GROVE VILLAGE, ILLINOIS 60007



Follow The  
Map To –  
**O'HARE**  
INTERNATIONAL AUTOS

Elmhurst (York) Road at Higgins (Touhy)

In Elk Grove

Midwest's Largest

**PORSCHE AUDI MAZDA**

Dealer

# REAR VIEW MIRROR

## THE GREAT BRAIN DRAIN FROM THE OLD

by Phil Zand

On Sunday afternoon, January 11, the club enjoyed its first event of the new year, a tech session, held at La-Ray's Restaurant in Niles, Illinois. The event was very well attended and we all had a great time. Following a pleasant hour of hospitality and camaraderie, the group watched a series of slides presented by Jerry Meyer, which showed various obscure Porsche parts interspersed with various not so obscure people parts. We all attempted to identify the items shown and were helped greatly by George Gutmann, Bruce Janecek and Bob White, who served as a panel of experts offering their helpful suggestions to the group. I personally recognized more of the people anatomy than the Porsche parts, but then that correlates directly with the number of years spent studying each. Brian Allman then administered a comprehensive, extremely well thought out multiple choice exam to the group. I must say that the last test I took that was that tough was back at veterinary school at the U. of I. years ago. Extraordinary top scores were earned by John Bohlander, George Gutmann, and George Rudawsky, who demonstrated that they are truly to be considered aficionados. Since their scores were double mine, they really earned my respect. A movie was then shown in which Martini & Rossi Porsche teams repeatedly trounced their competition in various European races. I liked the part where the pit mechanics replaced a clutch in an hour and a half. The movie was supplied by Porsche and clearly demonstrated the superiority of the cars, as well as how quickly warranty work can be performed. The meeting ended with a delicious dinner. We all owe special thanks to Brian and Sue Allman for what was a thoroughly successful club event. However, I do wish I would stop having those horrible nightmares about Brian's exam.

## THE GREAT BRAIN DRAIN FROM THE NEW

by George & Eve Estrada

As we pulled our non-Porsche out of the garage, I side glanced at our '67 911 Targa. The excitement rose as we went off to meet other Porsche enthusiasts for our second PCA event, the "Great Brain Drain".

We purchased our Porsche in late October, and we had always felt that owning a Porsche was synonymous with being an active member of PCA. After attending our second event, we are very excited and proud to become members of the Chicago Region.

Most auto clubs seem to be male oriented. However, the PCA, or at least the Chicago Region, seems to have a little something for all of its members, whether they are male or female.

The tech session opened with a funny and cleverly put together slide-quiz presentation. At first it seemed to be a gag, but in reality it turned out to be a very knowledgeable experience. The slide show was followed by a real "brain drain" test. The test covered many technical aspects of the various Porsche models, ranging from the very early 356's to the current 928's. The great technical knowledge of the members was proven by the high scores achieved by all the prize winners.

The tech session proved to be very enlightening. We both realized that although we have read much about Dr. Porsche's creations, we still have much to learn.

After the trophies were awarded we headed for the dining room. The food was good, and the atmosphere was pleasantly casual. As we sank our teeth into the homestyle beef and chicken, there was only one topic of discussion, PORSCHE, PORSCHE, PORSCHE. We loved it!



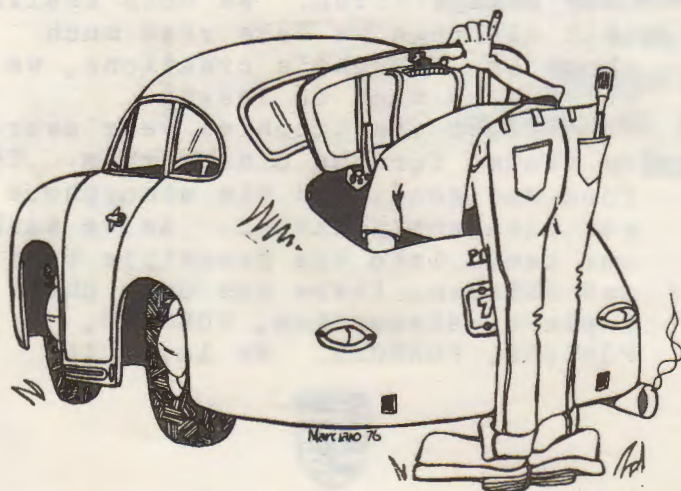
# THE GREAT BRAIN DRAIN RESULTS

## MEN

1. John Bohlander	56T
2. George Gutmann	46T
3. George Rudawsky	41T
4. Dick Gunther	39T
5. Chris Jensen	38T
6. Bruce Janecek	36T
7. O.J.Meyer	35T
8. Gene Coburn	35T
9. Walter Minato	34T
10. Rip Patterson	34
11. Stewart Chadde (App)	31
12. Tom Beverly	31
13. Rich Lotesta	31
14. Len Morrison	31
15. Nick Brenkus	30
16. Don Mores	29
17. Tom Harwood	27
18. George Estrada (App)	26
19. Tom Larson	25
20. Rush Pond	25
21. Jack Bushmeyer	25
22. John Heinz	24
23. Bob Simpson	24
24. Bob Gamble	24
25. Heber Macmahan	23
26. Bob Gummow	22
27. Phil Zand	22
28. Brad Wood	21
29. Roger Eckdahl	20
30. Bob Herman (App)	19
31. Bill Larson (App)	16
32. Myles Miller (App)	14

## LADIES

1. Wilma White	27T
2. Sue Bushmeyer	24T
3. Mae Minato	24
4. Susan Blomquist	23
5. Cindy Pegoraro	14
6. Eve Estrada (App)	9



# Peter Fischer Import Motors Inc.

**SPECIALIZING  
IN COMPLETE  
MAINTENANCE  
ON**



## 312-446-0414

1015 TOWER ROAD  
P.O. Box 373  
WINNETKA, ILL. 80093

Weekdays 8:00am to 5:00 pm - Sat. By Appointment



Brian: Gee, Sue, don't you feel like you're in school, marking papers?

Sue: Yes, but my third graders get more right!



Jerry: I don't think we'll be able to get anyone to help Helga in the goody store any more.

Rip: But we know it's not contagious.

Jerry: Thank heaven for little girls.



Bob: Want a walnetto?

Chris: I don't care what you offer me, I'm not telling you the answers.



Wilma: I have it from a direct source, this is the formula for region of the year.

Bob: Loaf of bread, quart of milk,...

Wilma: Whoops, wrong note, wrong Bob!



Rip: I told you not to help out in the goody store.

Linda: You were a teacher, you know that's not how it happens.

Rip: Oh, you mean it's the goody stork?



Walter: I've found this great site for an autocross.

George: We've been looking for sites, where is it?

Walter: Instruction 37 on our rallye.



Eve: I'm glad we got accepted for membership in time to go to the Parade.

George: Me too, I just love the floats and marching bands.



Rush: Boy, you should see what I did to my engine at Brainerd. I've just got to get an automatic.



Wayne: It's nice to get out and see some of these people at a place other than my farm.  
Marion: Yes, that test was no picnic.



Ginny: I must have misread the Scene, I thought this was a Concours.  
Bob: It is, they're cleaning the cobwebs out of their brains.



Florence: You mean that some of these people are your customers?  
Rew: Yes, can't you tell by their scores, they can't do their own work?



Harold: You told me they weren't serving chicken.  
Doris: No, I told you you were chicken not to take the tech quiz.



George: But that can't be the right answer!  
Linda: Trust me!



Frankie: I told you that you knew dogs better than you knew cars.  
Phil: Yes, but I've known some cars that were real dogs!



Another couple overjoyed at the prospect of becoming members of PCA.



Bruce: Well, after all these years, I finally got my name spelled right. Hang in there, someday you may get yours printed.

# UP AND COMING



Mae: Do you think it was right to tell all those applicants that they couldn't be members unless they came to our Rites of Spring rallye?

Walter: Don't worry, nobody will ever find out about our little white lie.



Wilma: That's the first time you've ever done what I told you to do!



Were those Porsche experts really experts? Of course they were, after all an ex is a has been and a spurt is a drip under pressure.



Mom was right when she said we should have gone to church today.



Tom: I told Randee I could take the tech quiz with my eyes closed, my score looks like I did.



Phyllis: Now where did you say we were going, Hawaii or Acapulco?

Tom: I don't know, we'll have to wait until I get the books to see where we can go.



Sue: Didn't I tell you there were lots of young, good-looking guys in our club?

Sue's friend: Yea, but where are they?



Chris: Boy, isn't this a perfect day for an ice gymkhana?



Gene: That wasn't my wife on the slides with the Porsche parts?  
Bruce: My wife doesn't have parts like that.  
John: I'd like to find out who does.



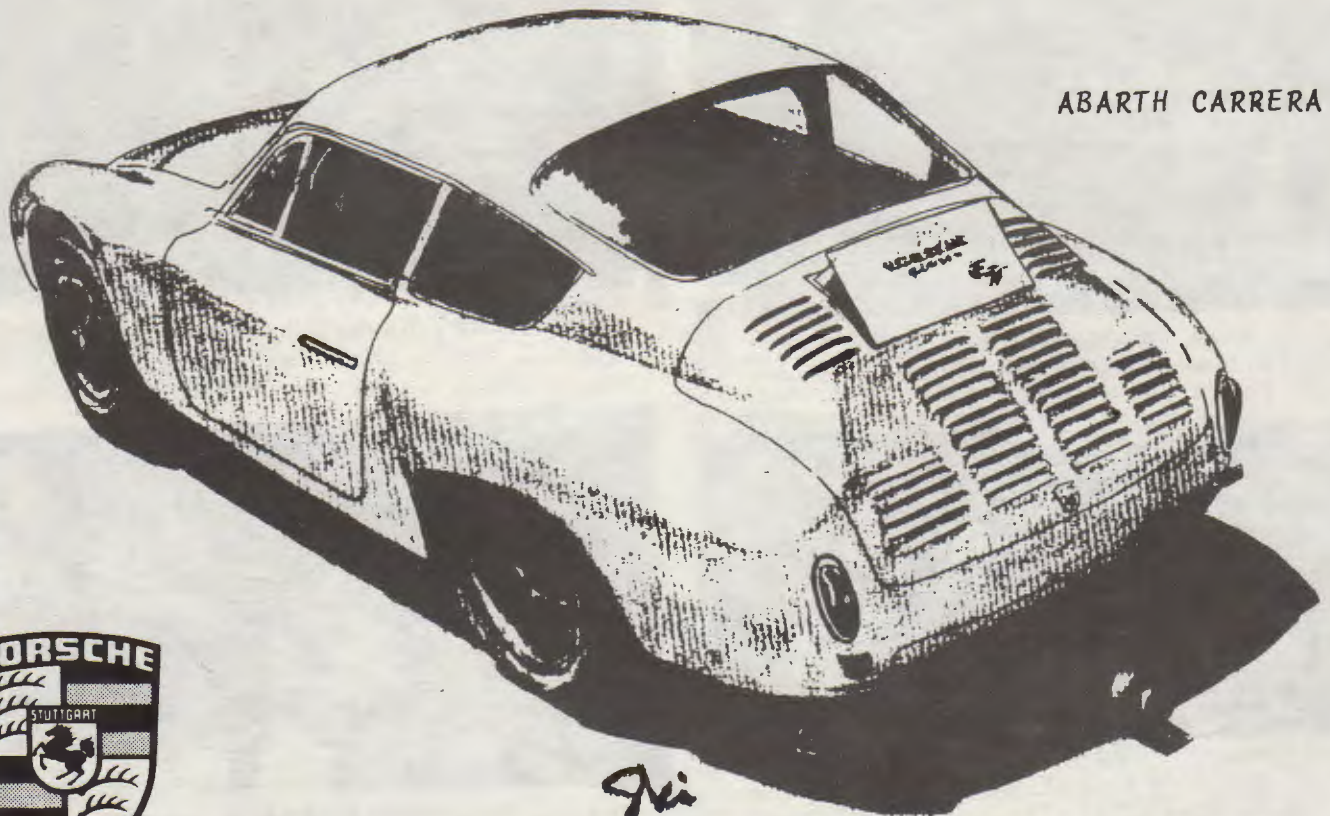
Winners - ladies class



Winners



More winners



ABARTH CARRERA



# UP AND COMING

## rites of Spring Rallye

Date: March 22, 1981  
Time: Registration 11:00 a.m.  
First car off 12:31 p.m.  
Place: O'Hare International Autos  
1000 Elmhurst Road  
Elk Grove Village, Illinois

Get ready to indulge in the RITES OF SPRING Rallye! On a sunny Sunday, March 22, your Porsche is cordially invited to defrost in the first WARM driving event of the year. The rallye proceedings commence at 11:00 a.m. at O'Hare International Autos (½ mile south of Northwest Tollway). The first car embarks at 12:31 pm a very enjoyable excursion into the verdant western wilderness. The endpoint is the Cattleman's Restaurant in Algonquin, where you may partake in immense quantities of food and spirits. A section of the restaurant has been reserved for PCA rallyists where a variety of meals may be ordered from an extensive menu (15% gratuity will be automatically added -- but sales tax will be excluded). Hint: try the Cattleman's special BBQ ribs.

This first time-speed-distance rallye of the year has been structured to be a straightforward and instructional event. The General Instructions for the rallye have been written to acquaint the novice and to "rehabilitate" the experienced (road-weary?) rallyist with the challenging and enjoyable aspects of rallying (e.g. not getting lost). So plan to arrive early at the starting point and spend a little time studying the General Instructions and asking relevant questions. In fact, to overcome any incipient and insipid (totally unwarranted) fears, an excerpt from the General Instructions has been included in this issue of the Scene. (Note: excerpts are subject to minor revisions.)  
Instruction #1: Find the General Instructions excerpts and study them.  
Instruction #2: Pre-register. It is your duty to do so.

## Spring Roundup

Date: April 26, 1981  
Place: To be announced  
Time: To be announced

All the speed goodies you bought and installed over the winter will be put to the test when you get your Porsche out of storage and bring it to the first speed event of the year.

Bob Simpson, Hokey, and myself, Joe Hill, as well as the irrepressible Dirty Dozen plan to put on an event like you haven't seen in a while.

We are looking at some sites, but serious suggestions will be considered. If you think you know of a site, contact Joe Hill 545-5351.

Classes will be the Chicago Region 6 class system.



## CHICAGO REGION 1981 CALENDAR OF EVENTS

March 22	Rallye
March 29	Brunch
April 26	Autocross
May 23-24	Elkhart Lake
June 28	Autocross
July 8	Midweek at Blackhawk
July 18	Evening Rallye
July 26-Aug 2	Parade
August 5	Midweek at Blackhawk
August 16	Concours/Potter's Picnic
September 4-6	Elkhart Lake
September 20	Autocross
October 4	Rallye
November 1	Concours/Halloween Party
December 5	Dinner Dance

## THE RALLYE ROUTE

THE RALLYE ROUTE IS DETERMINED BY THE ROUTE INSTRUCTIONS, THE SPECIAL INSTRUCTIONS, AND THE MAIN ROAD RULE DEFINED LATER IN THESE GENERAL INSTRUCTIONS.

THE ROUTE INSTRUCTIONS ARE TO BE EXECUTED ONCE AT THE FIRST POSSIBLE OPPORTUNITY UNLESS IT IS SPECIFIED OTHERWISE. ALL ACTIONS REQUIRED BY ONE ROUTE INSTRUCTION MUST BE COMPLETED BEFORE PROCEEDING TO THE NEXT ROUTE INSTRUCTION.

A ROUTE INSTRUCTION THAT IS ACCOMPANIED BY AN OFFICIAL RALLYE MILEAGE MAY ONLY BE EXECUTED AT THAT MILEAGE WITHOUT REGARD TO REDUNDANCY.

INFORMATION IN PARENTHESES IS TO BE CONSIDERED HELPFUL, HUMOROUS, OR IN BAD TASTE BUT NOT ESSENTIAL FOR THE CORRECT EXECUTION OF AN INSTRUCTION.

SPECIAL INSTRUCTIONS MAY BE CONTAINED IN THE CONTROL SLIPS THAT YOU WILL RECEIVE AT EACH CHECKPOINT. PLEASE STUDY THE INSTRUCTIONS, AND PERFORM THEM ACCORDINGLY.

THERE ARE NOT ROUTE INSTRUCTIONS FOR EVERY INTERSECTION (OPPORTUNITY TO TURN) THAT YOU WILL ENCOUNTER. YOU SHOULD APPLY THE MAIN ROAD RULE UNLESS YOU CAN EXECUTE A ROUTE INSTRUCTION WHICH WILL TAKE YOU IN A DIRECTION DIFFERENT FROM THAT OF THE MAIN ROAD.

IN THE UNLIKELY EVENT THAT YOU SHOULD BECOME "LOST", THERE WILL BE PICKUP POINTS DEFINED IN THE ROUTE INSTRUCTIONS TO ENABLE YOU TO RESUME THE RALLYE ROUTE.

## ROADS:

- (1) ONLY OPEN PUBLIC ROADS ARE TO BE USED. ROADS MARKED "PRIVATE", "NO OUTLET", "ROAD CLOSED", "DEAD END", ETC. DO NOT EXIST.
- (2) UNPAVED ROADS (DIRT, GRAVEL, ETC.) DO NOT EXIST.
- (3) DRIVEWAYS AND PARKING LOTS (WITH THE EXCEPTION OF THE START AND END POINTS) DO NOT EXIST.
- (4) ROADS THAT CLEARLY END IN A PLANT ENTRANCE, RESIDENCE, ETC. DO NOT EXIST.
- (5) PREFIXES (NORTH, NEW, OLD, ETC.) AND SUFFIXES (ST, AVE, ETC.) IN ROAD IDENTIFICATION NEED NOT BE CONSIDERED UNLESS SPECIFIED IN AN INSTRUCTION.
- (6) WHEN A ROAD IS REFERRED TO BY NUMBER, IT IS NOT NECESSARILY IDENTIFIED AS "U.S.", "STATE", "COUNTY", OR "INTERSTATE". FOR EXAMPLE, "LEFT ON 44" COULD BE EXECUTED ON INTERSTATE 44, U.S. 44, ILL. 44, OR 44TH STREET.
- (7) SOME ROADS ARE IDENTIFIED BY PRE-MARKED SIGNS BEFORE THE INTERSECTION; OTHERS ARE IDENTIFIED BY STREET SIGNS AT THE INTERSECTION. IF THERE IS A DIFFERENCE IN ROAD NAMES, THE STREET SIGN AT THE INTERSECTION TAKES PRECEDENCE.

## SIGNS:

- (1) ALL SIGNS REFERRED TO ARE IN QUOTES. SPELLING MUST BE EXACT.
- (2) SIGNS MAY BE TO THE RIGHT OR LEFT OR IN FRONT. THEY MAY BE PARALLEL OR PERPENDICULAR TO YOU, BUT YOU WILL NOT HAVE TO TURN AROUND TO READ A SIGN.
- (3) PUNCTUATION, LETTERING STYLE, AND ARTWORK ARE IRRELEVANT.
- (4) SIGNS PAINTED ON THE ROAD SURFACE, ATTACHED TO VEHICLES, OR ON MAIL BOXES ARE NOT USED.

## LANDMARKS:

ANY REFERENCED LANDMARK MUST BE DEFINED IN THE GLOSSARY OR BE IDENTIFIED BY A SIGN.

## MAIN ROAD RULE:

THE RALLYE ROUTE FOLLOWS THE "MAIN ROAD" UNLESS A ROUTE INSTRUCTION CAN BE EXECUTED THAT TAKES YOU IN A DIFFERENT DIRECTION. THE MAIN ROAD IS DETERMINED BY THE HIGHEST APPLICATION OF THE FOLLOWING (1 = HIGHEST, 4 = LOWEST):

- (1) PROTECTION BY STOP OR YIELD SIGNS.

THE MAIN ROAD LEAVES AN INTERSECTION BY THE ROAD THAT DOES NOT HAVE A STOP OR YIELD SIGN IF THERE IS ONLY ONE SUCH ROAD. THIS DOES NOT INCLUDE THE ROAD ON WHICH YOU ENTER THE INTERSECTION. IN EFFECT, YOU WILL ENTER THE ONLY ROAD WHICH IS NOT "PROTECTED" BY A STOP OR YIELD SIGN. REFER TO THE EXAMPLES.

- (2) RIGHT AT TEE.

THE MAIN ROAD TURNS TO THE RIGHT AT TEE INTERSECTIONS. A TEE INTERSECTION HAS THE GENERAL SHAPE OF THE LETTER "T" AS APPROACHED FROM THE BASE. IT IS NOT POSSIBLE (OR RECOMMENDED) TO GO STRAIGHT AT A TEE.

- (3) TURN TOWARDS CHECKPOINT.

- (4) STRAIGHT AS POSSIBLE.

GLOSSARY

**AFTER** FROM 1 INCH TO INFINITY BEYOND A REFERENCED NAVIGATIONAL AID.

**AT** "EVEN WITH" FOR SPEED CHANGES, MILEAGES, ETC. "IN THE VICINITY OF" FOR TURN INSTRUCTIONS, PAUSES, ETC.

**CAST** ACRONYM FOR "CHANGE AVERAGE SPEED TO"; BEGIN AVERAGE SPEED OF, OR CONTINUE AVERAGE SPEED OF. ALL CAST INSTRUCTIONS ARE GIVEN IN MILES PER HOUR.

**CHECKPOINT** A SIGN WHICH IDENTIFIES A CONTROL.

**CROSSROAD** AN INTERSECTION AT WHICH 2 PUBLIC ROADS CROSS EACH OTHER AT GRADE LEVEL WHERE IT POSSIBLE TO GO LEFT, RIGHT, AND STRAIGHT AHEAD.

**DOUBLE ARROW** AN OFFICIAL (BLACK ON YELLOW) HIGHWAY SIGN DEPICTING A DOUBLE-HEADED ARROW.

**INTERSECTION** ANY MEETING OR CROSSING OF 2 OR MORE PUBLIC ROADS AT GRADE LEVEL.

**JOG LEFT** A TURN TO THE LEFT FOLLOWED BY AN IMMEDIATE TURN TO THE RIGHT.

**JOG RIGHT** A TURN TO THE RIGHT FOLLOWED BY AN IMMEDIATE TURN TO THE LEFT.

**LEFT** A TURN TO THE LEFT FROM 1 TO 179 DEGREES.

**MARKED SIDEROAD** A SIDEROAD PRECEDED BY AN OFFICIAL (BLACK ON YELLOW) HIGHWAY SIGN DEPICTING THE INTERSECTION.

**ORM** ACRONYM FOR "OFFICIAL RALLYE MILEAGE"; EXPRESSED TO THE NEAREST HUNDRETH OF A MILE, ELAPSED FROM THE STARTING POINT OF THE RALLYE ROUTE.

**PAUSE** TO DELAY A SPECIFIED PERIOD OF TIME; THE PAUSE TIME IS ADDED TO THE LEG TIME.

**RIGHT** A TURN TO THE RIGHT FROM 1 TO 179 DEGREES.

**SIDEROAD** A ROAD WHICH LEAVES THE ROAD ON WHICH YOU ARE TRAVELING EITHER TO THE RIGHT OR TO THE LEFT, BUT NOT BOTH.

**SIGNAL** A TRAFFIC CONTROL DEVICE THAT USES RED, YELLOW, AND GREEN LIGHTS TO REGULATE TRAFFIC FLOW.

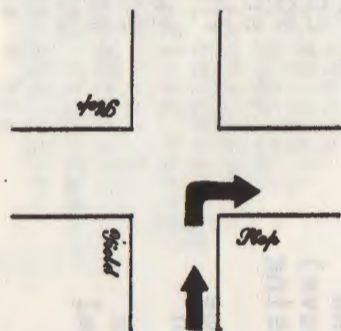
**STOP** AN INTERSECTION WITH AN OFFICIAL OCTAGONAL STOP SIGN AT WHICH THE RALLYE CAR IS OBLIGED TO STOP.

**TEE** AN INTERSECTION HAVING THE GENERAL SHAPE OF THE LETTER "T" AS APPROACHED FROM THE BASE. YOU MUST BE TRAVELING UP THE STEM TO CONSIDER IT A TEE.

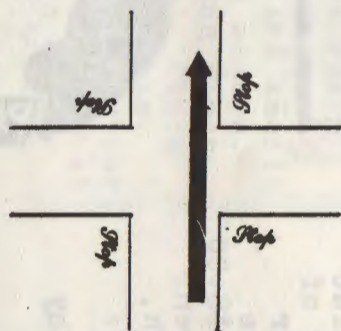
**TOWARDS TURN** IN THE DIRECTION OF THE REFERENCED SIGN OR LANDMARK. TO MAKE A CHANGE OF COURSE OR DIRECTION AT AN INTERSECTION; I.E., TO THE LEFT OR RIGHT. A TURN CANNOT DIRECT YOU STRAIGHT.

PLEASE USE COMMON ENGLISH DEFINITIONS FOR ANY WORDS NOT DEFINED HERE.

EXAMPLES



Protection—Main road goes right

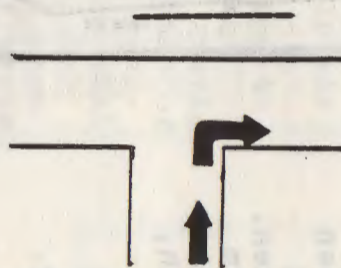


Protection does not apply

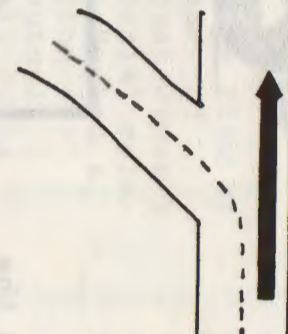
(no unique opportunity).

Straight as possible.

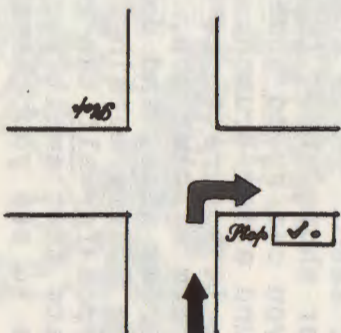
EXAMPLES



Right at TEE



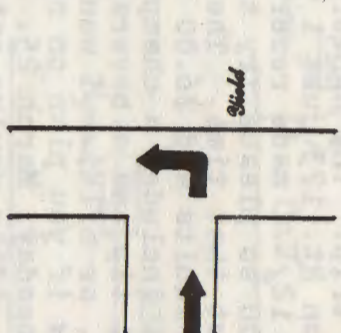
Straight as possible



Protection does apply

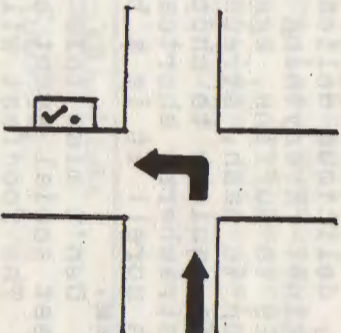
(no unique opportunity).

Turn towards CHECKPOINT

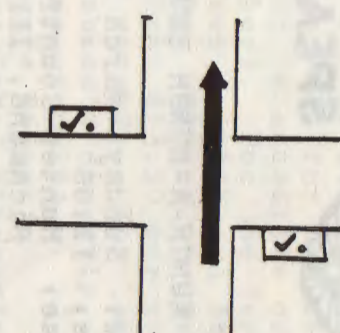


Protection—Main road goes left.

Supersedes "Right at TEE"



Turn towards CHECKPOINT



No unique opportunity to

turn towards CHECKPOINT.

Straight as possible



## SUE-CIALLY SPEAKING



### MUNCH-A-BUNCH BRUNCH

Date: Sunday, March 29  
Time: 11:00  
Place: Hunter Country Club  
Richmond, Ill.

This is it!! I have found the GREATEST place for brunch! Six, count them, six huge tables filled with the most delectable, delightful, delicious delicacies one can imagine. Everything from sweet rolls to muffins, eggs to chicken, bacon to hash, streudel to cream puffs, quiche to chop suey, salads to strawberry shortcake and much, much more!! It is a brunchers dream.

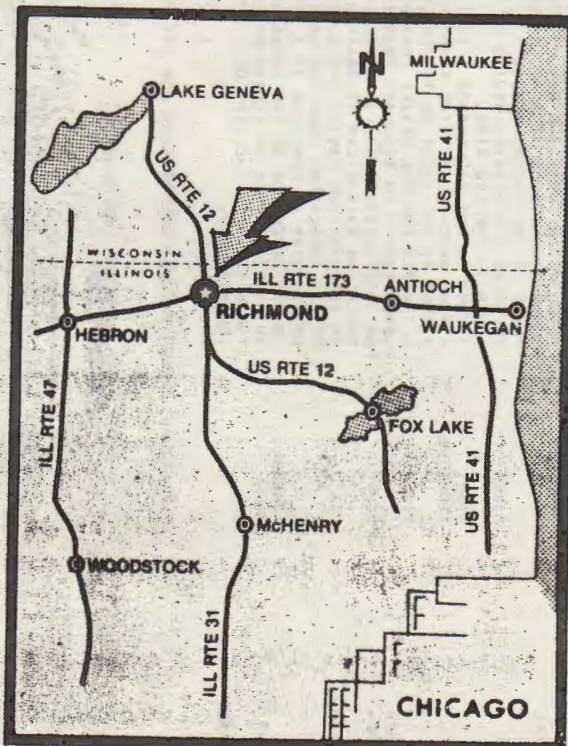
Don't miss this first and finest social event of the year.

The foodfest will be at Hunter Country Club in Richmond. I know it's a little far out but believe me when you see the brunch you'll ~~think it's~~ definitely worth the trip. The Hunter Country Club is on Rt. 173 just 1 block east of Rt. 12. I made reservations for 11:00 so please try to get there about that time. The price is \$8.00 for adults and \$6.00 for children, that includes a champagne brunch, tax, tip and a beverage (coffee, tea, or milk). I would like to know if you plan on coming out by Wednesday, March 25.

After you've eaten and socialized you may want to browse through the town of Richmond. It has some lovely old Victorian houses and the tallest curbs I've ever seen. There are antique and other shops about (like Long Grove) so you can spend some time browsing around after brunch.

It's sure to be a great time but I'm warning you, don't munch Saturday night and don't eat a thing Sunday morning. Save lots of room for all the gastronomical treats that await you. Hope to see you there!

*Aue*



SMOKY MOUNTAIN REGION  
CORDIALLY INVITES YA'LL  
TO A WEEK OF MOUNTAINS,  
SOUTHERN HOSPITALITY  
AND INTERESTING PEOPLE.

TWENTY-SIXTH  
PORSCHE PARADE  
ASHEVILLE, N.C.  
JULY 26 THRU AUGUST 2, 1981

## ROAD AMERICA

Date: May 23-24, 1981

Place: Elkhart Lake, Wisconsin

As many of you probably know by now, Mr. Clif Tufte, founder of Road America, died this past January. PCA/Chicago had a very special relationship with Mr. Tufte. He had a true fondness and admiration for PCA and the feeling was mutual. He loved and encouraged all forms of automobile competition and this included our professionally-run autocrosses. We were always welcomed with open arms at his lovely track.

We feel it is very fitting to dedicate this year's first Road America event to Clif. Road America will always be a living portrait of the man. His spirit will be ever-present at the track. We know that he'll always be looking over our shoulders to be sure we don't harm his beautiful, grassy run-off areas. So it is with great joy that we hold the Clif Tufte Memorial Autocross. His enthusiasm will be our inspiration to have the most exciting PCA Road America autocross yet.

Spring approaches! With it come the sights, sounds, and smells we all associate with the season. No, not flowers, birds, and fresh air - what romantic fools! There are far greater assaults on the senses - pit lanes, engines revving, and brake pads burning. You got it - it's Elkhart Time! (And that beats Miller Time any day.)

Road America + Memorial Day Weekend = the best get-it-on, let-it-fly time you'll ever have. We're ready to place down the first of what has become two great bookends in our calendar of driving events. Bob "O" Ostholthoff and Ed "I don't have a nickname" Russ have compiled all their learning experiences from last year's driving school to assemble a dynamite autocross (the first thing we learned is to skip the driver's school and just have an autocross). Track time will be stressed from the word "Go". Have your cars and yourselves prepared to run the 4 big miles at Road America.

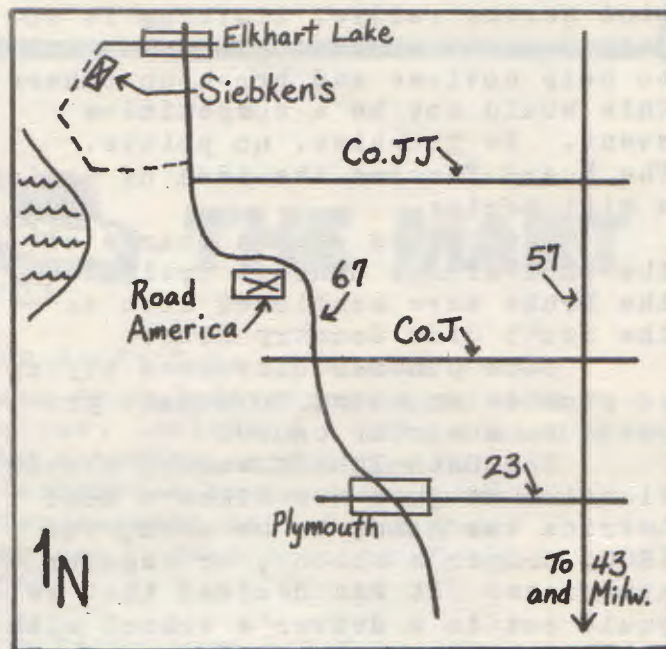
Entry fee is \$48 for the first driver, \$10 for the second driver (must be associate or family member). For one day only the fees are \$35 and \$8 respectively. Dinner at Siebken's Saturday night \$13.50 per person (choice of entree). For lodging contact Siebken's directly. Tell them you are with PCA.

Siebken's Resort  
Elkhart Lake, Wisconsin 53020  
414/876-2600

Rates are \$34-\$36.50/day for single, \$38-\$40.50/day for double.

Other lodging suggestions are available through:

Elkhart Lake Chamber of  
Commerce  
Elkhart Lake, Wisconsin 53020  
414/876-2922



# Running Board

Mae & Walter Minato presented for membership John Heinz, Terry Milterer, Bob Simpson and Bradley Wood. All were voted in.

There was discussion on whether or not we should get an instant camera for the purpose of getting snap shots of applicant members. It was voted down.

Tom Thompson reviewed the IROC meeting he attended. They do not want gymkhanas as part of the IROC series. Muncie Ramme region might join IROC, while Motor Stadt might drop out. There is a two car class in IROC, our club would like to institute the 3 car class for our event we hold in IROC. Tom will bring our views to the IROC board.

Jerry Meyer opened discussion about starting our own form of a mini series rallye, limiting it to only 3 series. Having one a month to help novices and brush up others. This would not be a competitive event. No trophies, no points. The board favored the idea of having a mini series.

The Gerows are in charge of the 9181 dinner dance. Options to the Drake were mentioned such as the South Side Country Club.

Dick Gunther discussed trying to promote an event to donate proceeds to a worthy cause.

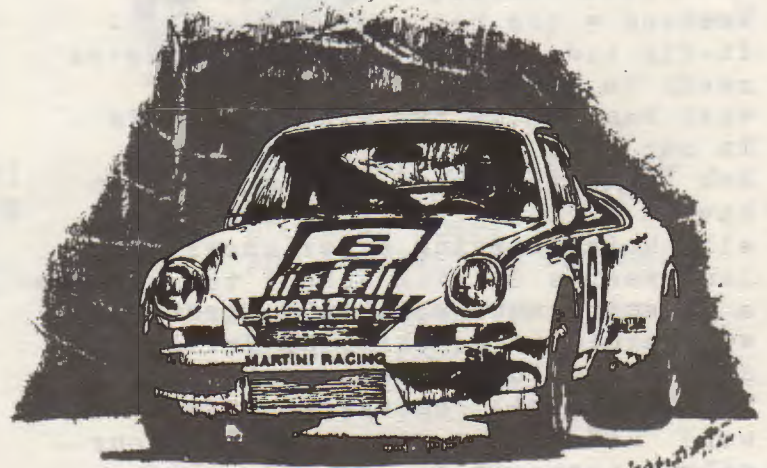
Bob Ostholthoff wanted clarification on just how Elkhart Road America was going to be used, for IROC, driver's school, or regular autocross. It was decided that we would not do a driver's school with an IROC event again, and use it as a regular autocross. Bob White suggested putting people at various corners on the track to watch how other drivers drive the course.

It was suggested that the point system for overall trophies be revised. Dick Gunther volunteered to keep track of overall scoring. It was decided to have people state ahead of time if they planned on running for trophies.

Bob Ostholthoff gave a warm thanks and appreciation to the fine and outstanding job Ed Russ did in serving as out treasurer.

## CHICAGO REGION GOODY STORE ITEMS

Chicago Region Car Badges	6.00
" " License Plate Frames	2.50
" " Key Chains	1.50
" " Name Badges	2.00
" " Yearbooks	1.00
" " T-Shirts	5.00
" " Patches	1.50
Bumper Stickers	1.00
Buttons "Porsche Uber Alles"	.25
Porsche Belt Buckles	7.95
Sweatshirts	5.00
PCA Mylar Decals (interior & exterior)	1.00
PCA 2" Decals	.10
PCA 1" Flats	2.00
PCA ½" Flats	1.50
PCA Car Badges	12.00
PCA Emblem Patches (small)	1.50
PCA " " (large)	3.00
Up-Fixin der Porsche Vol. I	4.00
" " " Vol. II	4.00
" " " Vol. III	4.00
" " " Vol. IV	7.00
Porsche Mugs	3.00
Porsche Decals (small)	.50
" " (medium)	.75
" " (large)	1.25
" " (XL)	3.00
Porsche Key Fobs	4.00
Porsche Key Cases	6.00
Porsche Stick Pins	.75
Porsche Cars	3.00 to 6.00
Porsche Swiss Army Knife	17.50
Porsche Tripartite Knife	6.00
Porsche Patches (small)	1.00
" " (medium)	2.00
" " (large)	5.00
Porsche "Sex" Patches	1.00
Porsche Jewelry	14.00 to 28.00
Porsche Underwear (o.s.f.a.)	4.00



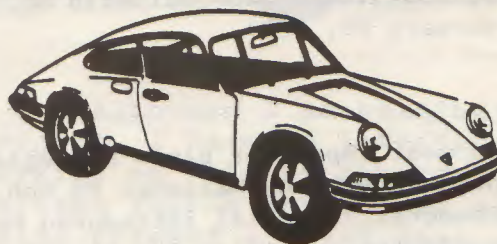
# \* Lindatorial

I hope all of you sent in your registration for the Parade. It sounds as if we're going to have a big turnout from our region if everyone I've heard talking about going sent in their registrations. Parades are fun to go to, we usually plan our vacation around the Parade. I've never been to the Smoky Mountains, they tell me it's beautiful there. Let's hope we have a crowd from Chicago there, that will make it even more beautiful.

But, there's another event before that that you should not miss. The Munch a Bunch Brunch coming up in March, on the 29th to be exact. Details are in another section, registration form is in the back. Don't miss it. We tried it out one Sunday with Brian and Susan, it was fantastic. When Susan says don't eat Saturday night, she's not kidding. There was so much food, buffet style, where you could go back as many times as you wanted, that even I couldn't try everything they had. We were stuffed. Everything was so good. If you miss this one, you'll really be missing something. It may seem to be far away, but it's well worth the trip. If you like to eat at all, send in your registration now.

It's time now to get Porsche fever. The snow's gone (at least for now), the weather's getting nicer, come on out. The rallye coming up is a good chance to get everything out of mothballs, renew old friendships, and just have a nice ride. It should be fun, so come on out. Spring has sprung, see you soon,

*Linda*



## LEE KLINGER PORSCHE + AUDI

1848 St. John      Downtown Highland Park  
(2 Blocks from the Northwestern R.R. Station)  
Service Hours: Mon - Fri 7:30-8:00  
Parts Hours: Mon - Fri 8:00-8:00  
432-8030      OPEN SUNDAY

# parts & service



## THE MART

FOR SALE: Lots of engine parts from my 2.7 Carrera. Also many extras, including a new, unused 3.0 metering unit and a C.D. Pistons can be used to increase displacement in 2.2 and 2.4 engines. Owen Johnson 312/325-8664.

FOR SALE: 1970 914/6 black with flares; 911S 2 liter engine; 7"-8" factory mags with CN36-185 on front, 225 on rear. \$9500 or trade. Call Dean Bangert 312/448-7575 home or 312/846-8500 work between 11 and 1 Tuesday and Thursday.

CORRECTION TO 1981 DIRECTORY:  
Richard Gunther  
Home: 312/966-5195

Legislative Liaison Bulletin No. 81-1  
February 20, 1981

*Bob Rassa*

Robert C. Rassa  
Chairman,  
National Legislative Liaison Committee

The most important piece of legislation introduced thus far is a bill which would repeal the National 55 mph speed limit. Congressman Larry McDonald (Democrat, Georgia) introduced House Resolution 992 (H.R. 992) which would delete the provision for the 55 mph maximum limit from the U.S. code. All PCA members are urged to write their Congressmen IN SUPPORT OF H.R. 992.

Here's how to write your Congressman:

ADDRESS: The Honorable John Doe  
House of Representatives  
Washington, D.C. 20515

Dear Mr. Doe:

The body of the letter should be short and brief. All you have to say is that you favor the resolution and you want your Congressman to vote for it. Hand-written letters are perfectly acceptable, and in fact, are somewhat preferred.

One additional item of interest which does not require any member action just yet, is that the Pacific Legal Foundation recently introduced a petition to the NHTSA which would repeal the present Motor Vehicle Safety Standard 208. This is the standard that is requiring Air Bags (essentially) to be installed in all vehicles by 1984, starting in 1982 with luxury cars. This is one issue that PCA has been opposed to all along, and we will keep you posted of the status of this petition.

Another item of interest is the fact that in January the NHTSA denied a petition submitted by the Insurance Institute for Highway Safety that would have required all "cruise control" devices to have a maximum setting of 55 mph. This intelligent action by NHTSA is indicative of their responsiveness to President Reagan's anti-regulation policy, and we applaud NHTSA for their action.

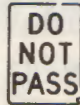
There are a number of state issues that have arisen over the past few weeks which would require those Regions in the affected State to request their members to contact their state assemblymen and voice their opinion on the issue. Following is a summary of each issue with the PCA recommendation.

INDIANA introduced H-1034 which would prevent both the Air Pollution Control Board and the Board of Health from mandating a periodic motor vehicle inspection program for emissions. PCA urges Indiana members to SUPPORT this measure.

INDIANA introduced H-1205 that would require an annual emissions inspection for vehicles owned by persons living outside those counties now subject to an emissions inspection requirement but who are employed in such a county. PCA recommends that Indiana members NOT SUPPORT this measure, for obvious reasons.

INDIANA introduced H-1035 which would increase the speed limit from 55 to 65 mph. While this is not as good as Colorado's approach, PCA still recommends that the Indiana members SUPPORT this bill.

INDIANA also introduced H-1323 which provides an income tax credit equal to the sum of the amount a taxpayer spends for a federally-required emissions test plus any amount the taxpayer is required to spend on repairs as a result of the test. PCA SUPPORTS this measure (if you have to pay for an emissions test and repairs, you might as well recoup some of your investment).



### CHICAGO REGION: Best in Country?

This is a valid question for us all to ask ourselves. Many of us have no doubt in our minds that we are the very best PCA region. All one has to do is look at our members, our events, our financial picture, our participation. The only thing we have been lacking is publicity. Well, that is coming to an end immediately.

Throughout the 1981 calendar year, Chicago Region is going to record its every move. I will be responsible for compiling this information (monthly articles have already been appearing in Panorama on our events) and presenting it in a complete log book. We will then present this book at the 1982 Parade as our nomination for 1981 Region of the Year. As content as we are with our region, it would instill some additional pride in us all to be nationally recognized. And let's face it, we deserve praise for running such a high caliber operation.

Although I am heading up this project, I have no intentions of working on this by myself. True to Chicago Region form, I am already being offered a great deal of assistance from many members, a good number of them, encouragingly, are new and transfer members. It is that kind of involvement I want and that we all must expect in order to keep our region on top.

I'm looking forward to this year in PCA not only for my work on this project, but because I know we have another great year of events lined up for our members. Region of the Year is going to be fun to achieve. Look for some new twists this year, including a strong membership drive involving several nice incentives. If you expect to have an opportunity to win some nice prizes, then keep yourself informed by reading the Scene and attending events.

My number is on the cover, so give me a call. I want your help.

Bob "O" Ostholthoff

## Body Werks of Barrington

For the Finest in  
**PORSCHE, MERCEDES and BMW**  
Work and Painting



Cycle Werks  
Of Barrington

DESI VINCZEN • 126 Cook Street • Barrington, IL  
381-9144



REGISTRATION FORM

CLIF TUFTE MEMORIAL AUTOCROSS - MAY 23 - 24, 1981

Dear Julie & Jerry,

What better reason to go than for the memory of Clif Tufte?  
Count me in!

1st Driver \_\_\_\_\_ 2nd Driver \_\_\_\_\_

Member \_\_\_ App. \_\_\_ Guest \_\_\_ Member \_\_\_ App. \_\_\_ Guest \_\_\_

Region \_\_\_\_\_ Sat. Sun. Both Days (Circle one)

Make of car \_\_\_\_\_ Model \_\_\_\_\_ Year \_\_\_\_\_

Body Style \_\_\_\_\_ Color \_\_\_\_\_ Displacement (2.0,2.2etc.) \_\_\_\_\_

Street or race tires? (If other than stock, specify size & mfr.) \_\_\_\_\_

Rim width \_\_\_\_\_ Modifications \_\_\_\_\_  
(List all - use back if necessary)

Have you ever autocrossed Road America? 1st driver \_\_\_\_\_ 2nd driver \_\_\_\_\_

1980 PCR classes will be used for this event. No open exhaust allowed except on factory built or SCCA approved race cars. No alcoholic beverages may be consumed at any time on the premises. This includes guests.

FEES: Both days	1st Driver	\$48.00	_____
	2nd Driver	\$10.00	_____
One day	1st Driver	\$35.00	_____
	2nd Driver	\$ 8.00	_____

Dinners (Sat. night) **MUST BE RESERVED BY MAY 18**

_____	Wienerschnitzel @	\$13.50 ea.	_____
_____	Prime Rib @	\$13.50 ea.	_____
_____	Duck @	\$13.50 ea.	_____

(Payable to PCA/Chicago) TOTAL ENCLOSED . . . . \$ \_\_\_\_\_

Mail to: Julie & Jerry Quebe, 1207 E. Olive, Arlington Hts., IL 60004

Is your spouse/friend willing to work timing? Yes \_\_\_ (Check one)

Name \_\_\_\_\_

# The Audi 5000. (FORMERLY BRYNTESEN)

5 cylinders that are going to  
turn the luxury car industry on its ear.



## Hinsdale

PORSCHE | AUDI

300 EAST OGDEN AVENUE, HINSDALE, ILLINOIS, 887-1010

### CHANGE OF ADDRESS

Name \_\_\_\_\_ Wife's Name \_\_\_\_\_

New Address \_\_\_\_\_

Business Phone \_\_\_\_\_ Home Phone \_\_\_\_\_

MAIL TO:

PCA/Chicago Region

767 Ivy Lane

Glencoe, Illinois